

## BD CUBIC



### DOUBLE INLET FAN

#### MANUFACTURING FEATURES:

- Galvanised steel sheet housing.
- Double inlet forward curved impeller.
- Supported and reinforced by lateral plates.
- Motor fixing with an exclusive system designed by Casals through flexible arms and silent blocks that avoid any vibration. Flexible arms in compliance with the ROHS 2002/95/EC Directive (Restriction of the Use of Certain Hazardous Substances in Electrical and Electronic Equipments).
- Closed motors specially designed by Casals: extruded aluminium motor housing, wiring box fit in the motor with IP-65 protection.
- Motor with IP-55 protection and Class F insulation. Manufactured with standard voltages: 230V/400V 50Hz

## Accessories



INT



MBI



RA



RI



SFC

#### APPLICATIONS:

- Ventilation boxes and air handling units.
- Centrifugal heaters
- Industrial and professional kitchen hoods.
- Maximum working temperature in continuous: 50°C

#### UNDER REQUEST:

- assembled

## Technical data

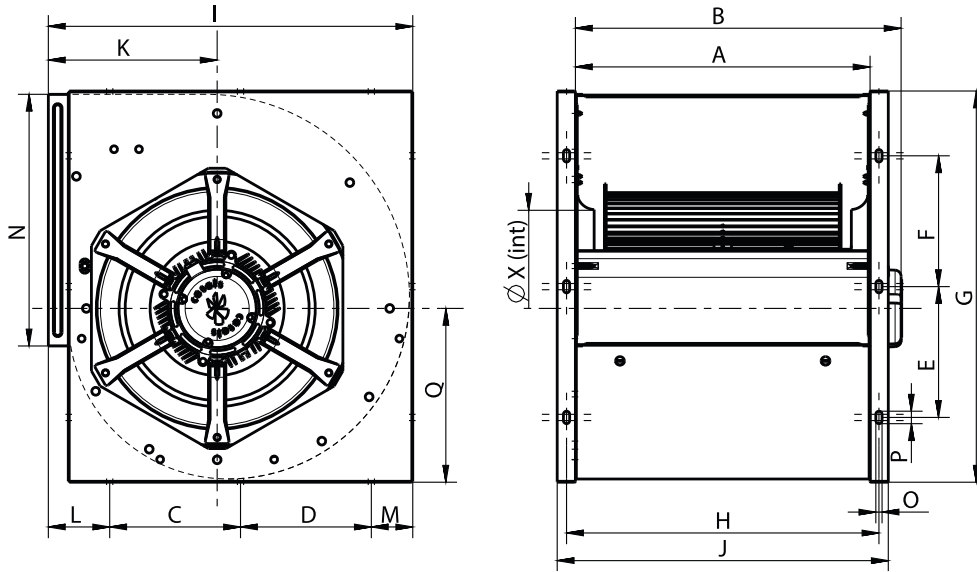
### Three-phase motor

Code	Model	R.P.M.	Rated I. (A) 400V	Rated power kW	Max. Airflow m3/h	Sound db (A)*	Weight	Connect. diagram
252370106	BD 15/15 T6 2,2kW	900	6,31	2,20	11.000	63	57	1

**Notes:**

\* Total sound pressure level at the point of maximum flow measured in dB(A) in the suction measured in free field at a distance of 6m from the source

### Dimensions



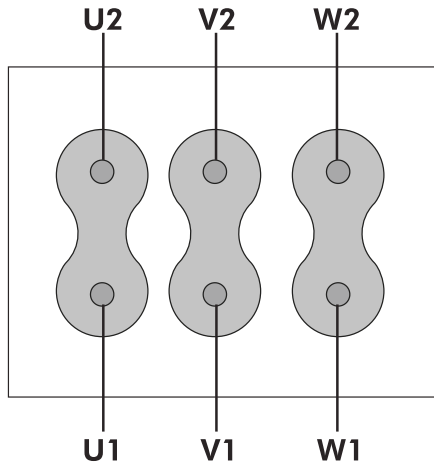
Model	A	B	C	D	E	F	G	H	I
BD 15/15 T6 2,2kW	473	522,8	210	210	210	210	628	501,5	585

Model	J	K	L	M	N	O	P	Q	X
BD 15/15 T6 2,2kW	531,5	271	98,5	66,5	404	10	20	279	315

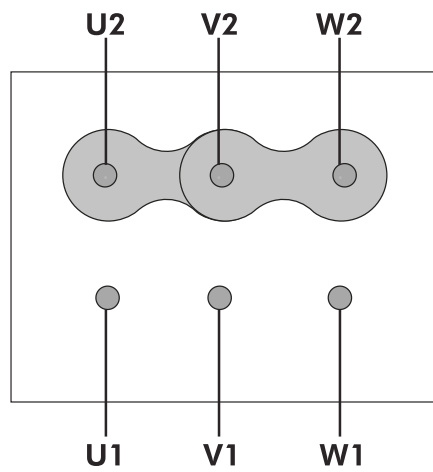
## Wiring diagram

DIAGRAM N° 1

230V 



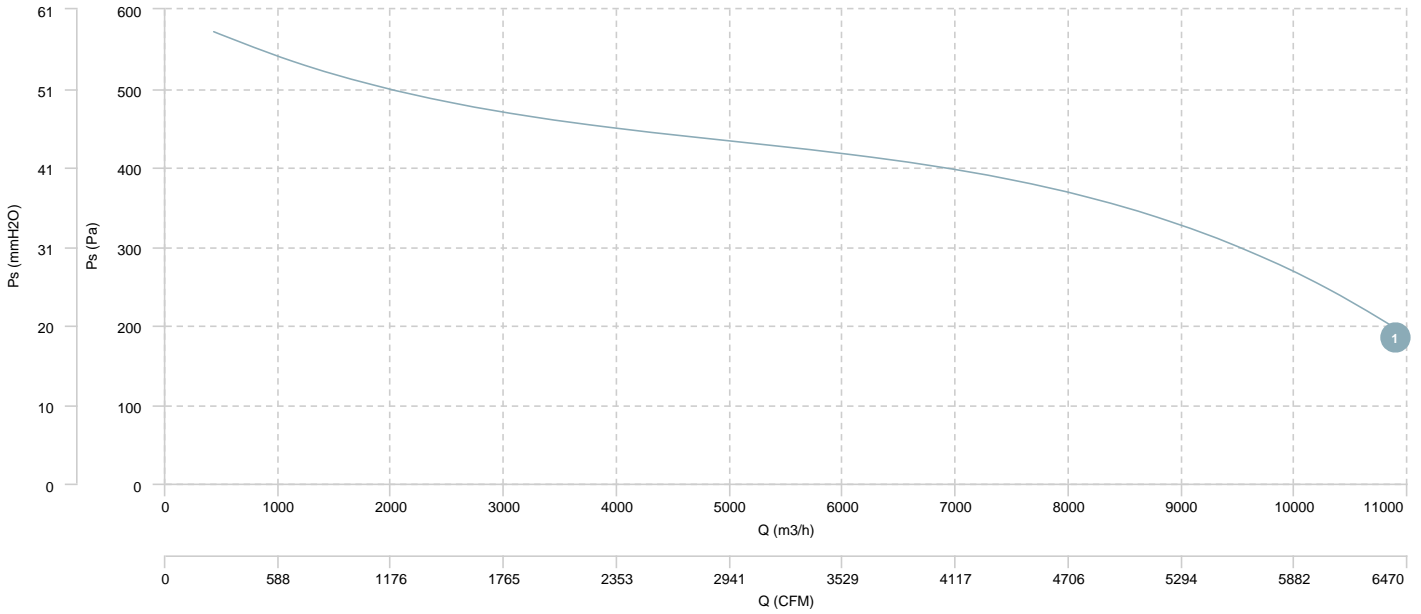
400V 



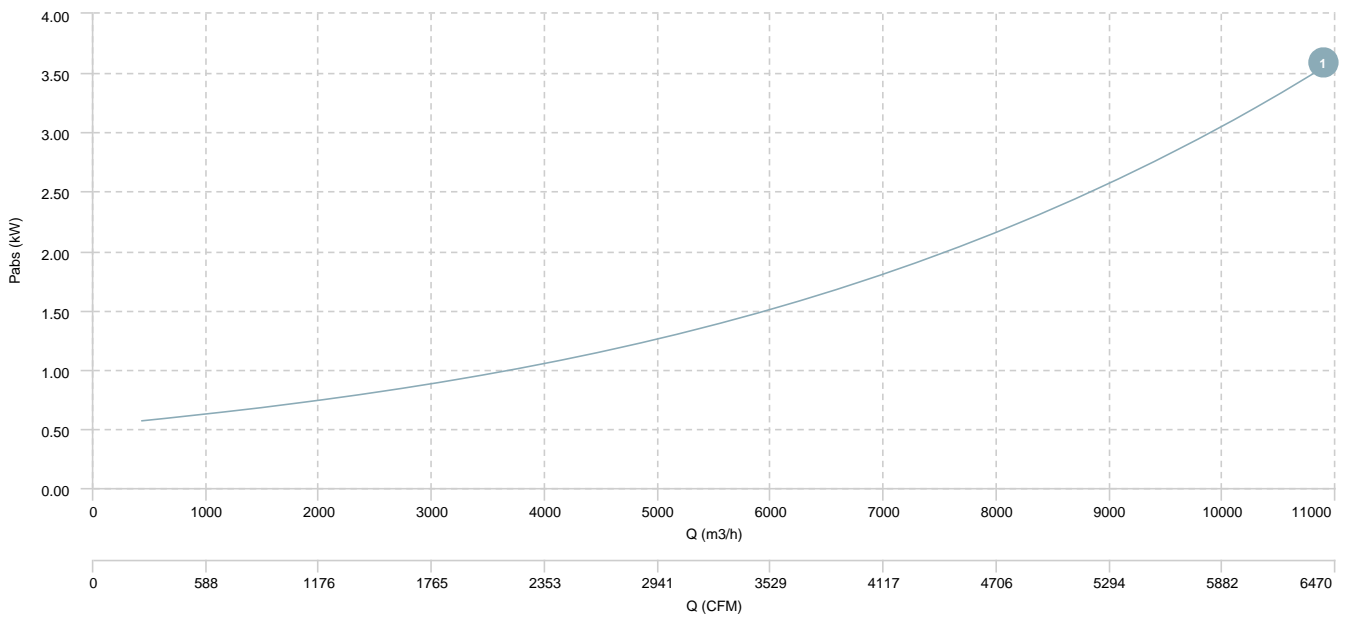
# CHARACTERISCTIC CURVE

1 BD 15/15 T6 2,2kW

## AIR FLOW - PRESSURE



## AIR FLOW - ABSORBED POWER



## Sound data

		Sound power Lw dB (A)								
Model		63 Hz	125 Hz	250 Hz	500 Hz	1000 Hz	2000 Hz	4000 Hz	8000 Hz	Total
BD 15/15 T6 2,2kW	Inlet	68	70	79	81	85	84	80	70	89

erp data

ERP	
Fan type	Centrifugal fan radial or forward blades
Installation category	A
Efficiency category	Static
The fan has to be installed with FSC	No

Model	Motor power (kW)	Maximum efficiency point data						
		Max. efficiency (%)	Efficiency grade (N) (N)	Air Flow (m3/h)	Ps (Pa)	Pabs (kW)	speed (rpm)	Specific ratio
BD 15/15 T6 2,2kW	2,20	49,20	54,94	4.932,80	434,72	1,24	900	1,00