

MBI



OUTLET FLANGE

Connection flange to be fitted in the centrifugal fans outlet and make the connection with duct easier.

Fans



BD



BD CUBIC



BD EEC



BD3V

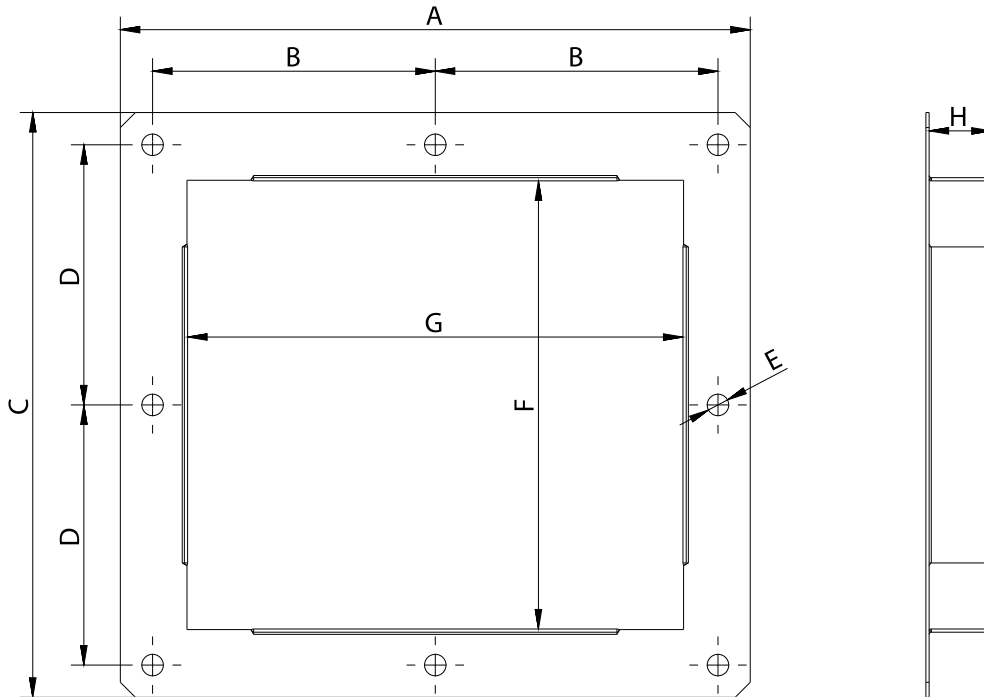


BV

Technical data

Code	Model
251161691	MBI 7/7
251261691	MBI 9/7
251281691	MBI 9/9
251331691	MBI 10/8
251601691	MBI 12/9
251371691	MBI 10/10
251521691	MBI 12/12
252371691	MBI 15/15
252451691	MBI 18/18

Dimensions



Model	A	B	C	D	F	G	H	Ø E
MBI 7/7	293	131,5	272	121	208,5	230,5	30,4	10
MBI 9/7	296	133	321	145,5	260,5	235,5	30,4	10
MBI 9/9	360	165	321	145,5	258,5	299,5	30,4	10
MBI 10/8	324	147	351	160,5	290	263	30,9	10
MBI 12/9	370	170	401	185,5	341	310	30,9	10
MBI 10/10	389	179,5	351	160,5	290	328	30,9	10
MBI 12/12	455	212,5	400	185	339	394	30,9	10
MBI 15/15	532	251	470	220	409	471	30,9	10
MBI 18/18	615	292,5	539	254,5	478	554	30,9	10