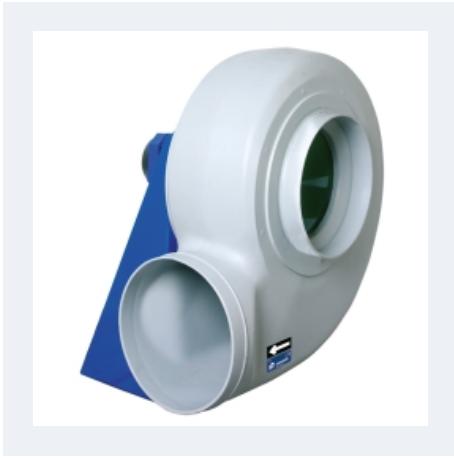


MBP



MEDIUM PRESSURE WITH BACKWARD IMPELLER AND PLASTIC CONSTRUCTION

MANUFACTURING FEATURES:

- PE plastic housing.
- Backward impeller with self-cleaning system in PP plastic.
- Motor support made of rolled steel sheet with polyester powder finishing coat.
- Stainless steel nuts and bolts.
- Standard asynchronous squirrel-cage motor, IP-55, class F insulation. Standard voltages 230/400V 50Hz

- Available positions (to be indicated in case of order): LG270, LG0, LG45, LG90, LG135, LG180, LG225, LG315, RD0, RD45, RD90, RD135, RD180, RD225, RD270, RD315.
- The indicated codes correspond to the model in position LG270

APPLICATIONS:

Designed for inline installation, they are suitable for:

- Corrosive air transport.
- Chemical and petrochemical industry.
- Laboratories and gas cabinets.

- Maximum temperature of transported air: If it is clean air 70°C, other depends on the gas (see table in documentation)

UNDER REQUEST:

- Single phase motors (up to 1,1Kw).
- 60Hz fans and special voltages fans.
- 2 speed motors.
- Stainless steel motor support.
- Casing made of PP.

Accessories



Technical data

Three-phase motor / 2 poles

| Code | Model | R.P.M. | Rated I. A | | Rated power kW | Max. Airflow m ³ /h | Sound db (A)** | Weight kg | Connect. diagram |
|-----------|------------------|--------|---------------|-------|-------------------|--------------------------------------|-------------------|--------------|---------------------|
| | | | 230V | 400V | | | | | |
| 502202013 | MBP 20 T2 0,18kW | 2710 | 1,00 | 0,55 | 0,18 | 1.110 | 64 | 9 | 1 |
| 502202214 | MBP 22 T2 0,25kW | 2710 | 1,2 | 0,71 | 0,25 | 1.520 | 68 | 10 | 1 |
| 502202515 | MBP 25 T2 0,37kW | 2730 | 1,7 | 0,97 | 0,37 | 2.110 | 71 | 13 | 1 |
| 502202817 | MBP 28 T2 0,75kW | 2840 | 3,00 | 1,75 | 0,75 | 3.140 | 76 | 19 | 1 |
| 502203119 | MBP 31 T2 1,5kW | 2850 | 5,5 | 3,2 | 1,50 | 4.360 | 76 | 26 | 1 |
| 502203527 | MBP 35 T2 2,2kW | 2860 | 7,9 | 4,54 | 2,20 | 6.630 | 80 | 32 | 1 |
| 502204534 | MBP 45 T2 5,5kW | 2900 | - | 11,00 | 5,50 | 11.770 | 76 | 57 | 1 |

Three-phase motor / 4 poles

| Code | Model | R.P.M. | Rated I. A | | Rated power kW | Max. Airflow m ³ /h | Sound db (A)** | Weight kg | Connect. diagram |
|-----------|------------------|--------|---------------|------|-------------------|--------------------------------------|-------------------|--------------|---------------------|
| | | | 230V | 400V | | | | | |
| 502202039 | MBP 20 T4 0,12kW | 1360 | 1,00 | 0,55 | 0,12 | 580 | 50 | 9 | 1 |
| 502202239 | MBP 22 T4 0,12kW | 1400 | 1,38 | 0,79 | 0,25 | 770 | 53 | 13 | 1 |
| 502202539 | MBP 25 T4 0,12kW | 1360 | 1,00 | 0,55 | 0,12 | 1.100 | 57 | 10 | 1 |
| 502202840 | MBP 28 T4 0,18kW | 1310 | 1,2 | 0,7 | 0,18 | 1.570 | 59 | 14 | 1 |
| 502203141 | MBP 31 T4 0,25kW | 1350 | 1,4 | 0,8 | 0,25 | 2.170 | 59 | 19 | 1 |
| 502203542 | MBP 35 T4 0,37kW | 1370 | 1,9 | 1,1 | 0,37 | 3.310 | 64 | 23 | 1 |
| 502204043 | MBP 40 T4 0,55kW | 1370 | 2,7 | 1,58 | 0,55 | 4.510 | 68 | 33 | 1 |
| 502204545 | MBP 45 T4 1,1kW | 1420 | 4,3 | 2,5 | 1,10 | 6.060 | 68 | 40 | 1 |

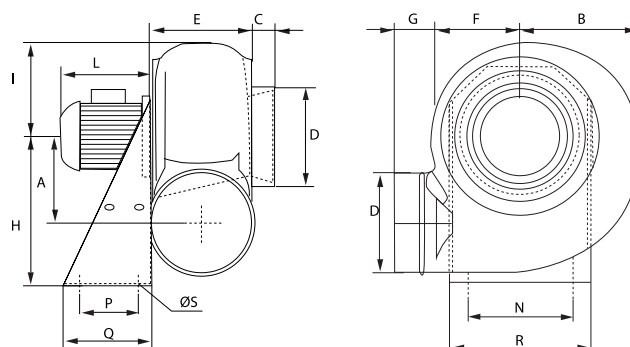
Three-phase motor / 6 poles

| Code | Model | R.P.M. | Rated I. A | | Rated power kW | Max. Airflow m ³ /h | Sound db (A)** | Weight kg | Connect. diagram |
|-----------|------------------|--------|---------------|------|-------------------|--------------------------------------|-------------------|--------------|---------------------|
| | | | 230V | 400V | | | | | |
| 502203168 | MBP 31 T6 0,18kW | 880 | 1,2 | 0,7 | 0,18 | 1.410 | 50 | 19 | 1 |
| 502203568 | MBP 35 T6 0,18kW | 880 | 1,2 | 0,7 | 0,18 | 2.140 | 54 | 23 | 1 |
| 502204069 | MBP 40 T6 0,25kW | 900 | 1,5 | 0,87 | 0,25 | 2.920 | 58 | 30 | 1 |
| 502204570 | MBP 45 T6 0,37kW | 900 | 2,1 | 1,23 | 0,37 | 3.930 | 54 | 37 | 1 |

Notes:

** Total sound pressure level at the point of maximum flow measured in dB(A) in the suction measured in free field at a distance of 6m from the source

Dimensions



| Model | A | B | C | D | DØ | E | F | G | H |
|------------------|-----|-----|----|-----|-----|-----|-----|----|-----|
| MBP 20 T2 0,18kW | 140 | 180 | 35 | - | 160 | 160 | 138 | 55 | 250 |
| MBP 20 T4 0,12kW | 140 | 180 | 35 | - | 160 | 160 | 138 | 55 | 250 |
| MBP 22 T2 0,25kW | 173 | 228 | 35 | - | 200 | 185 | 170 | 55 | 310 |
| MBP 22 T4 0,12kW | 173 | 228 | 35 | - | 200 | 185 | 170 | 55 | 310 |
| MBP 25 T2 0,37kW | 173 | 228 | 35 | - | 200 | 185 | 170 | 55 | 310 |
| MBP 25 T4 0,12kW | 173 | 228 | 35 | - | 200 | 185 | 170 | 55 | 310 |
| MBP 28 T2 0,75kW | 208 | 255 | 40 | - | 225 | 195 | 190 | 70 | 350 |
| MBP 28 T4 0,18kW | 208 | 255 | 40 | - | 225 | 195 | 190 | 70 | 350 |
| MBP 31 T2 1,5kW | 240 | 280 | 40 | - | 250 | 200 | 210 | 70 | 410 |
| MBP 31 T4 0,25kW | 240 | 280 | 40 | - | 250 | 200 | 210 | 70 | 410 |
| MBP 31 T6 0,18kW | 240 | 280 | 40 | - | 250 | 200 | 210 | 70 | 410 |
| MBP 35 T2 2,2kW | 260 | 312 | 40 | - | 280 | 237 | 230 | 50 | 445 |
| MBP 35 T4 0,37kW | 260 | 312 | 40 | - | 280 | 237 | 230 | 50 | 445 |
| MBP 35 T6 0,18kW | 260 | 312 | 40 | - | 280 | 237 | 230 | 50 | 445 |
| MBP 40 T4 0,55kW | 290 | 356 | 40 | - | 315 | 252 | 264 | 55 | 495 |
| MBP 40 T6 0,25kW | 290 | 356 | 40 | - | 315 | 252 | 264 | 55 | 495 |
| MBP 45 T2 5,5kW | 324 | 400 | 40 | 355 | - | 287 | 295 | 55 | 550 |
| MBP 45 T4 1,1kW | 324 | 400 | 40 | - | 355 | 287 | 395 | 55 | 550 |
| MBP 45 T6 0,37kW | 324 | 400 | 40 | - | 355 | 287 | 295 | 55 | 550 |

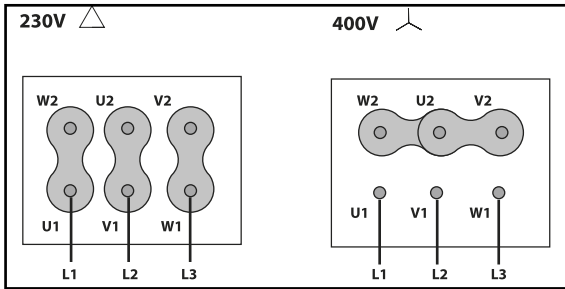
| Model | I | L | N | P | Q | R | S | ØS |
|------------------|-----|-----|-----|-----|-----|-----|----|----|
| MBP 20 T2 0,18kW | 150 | 195 | 200 | 100 | 140 | 235 | 11 | - |
| MBP 20 T4 0,12kW | 150 | 190 | 200 | 100 | 140 | 235 | 11 | - |
| MBP 22 T2 0,25kW | 190 | 210 | 255 | 100 | 140 | 290 | 11 | - |
| MBP 22 T4 0,12kW | 190 | 190 | 225 | 100 | 140 | 290 | 11 | - |

| Model | I | L | N | P | Q | R | S | ØS |
|------------------|-----|-----|-----|-----|-----|-----|----|----|
| MBP 25 T2 0,37kW | 190 | 220 | 255 | 100 | 140 | 290 | 11 | - |
| MBP 25 T4 0,12kW | 190 | 190 | 255 | 100 | 140 | 290 | 11 | - |
| MBP 28 T2 0,75kW | 210 | 240 | 280 | 120 | 190 | 316 | 11 | - |
| MBP 28 T4 0,18kW | 210 | 190 | 280 | 120 | 190 | 316 | 11 | - |
| MBP 31 T2 1,5kW | 230 | 290 | 320 | 150 | 230 | 355 | 11 | - |
| MBP 31 T4 0,25kW | 230 | 220 | 320 | 150 | 230 | 355 | 11 | - |
| MBP 31 T6 0,18kW | 230 | 210 | 320 | 150 | 230 | 355 | 11 | - |
| MBP 35 T2 2,2kW | 270 | 290 | 355 | 150 | 230 | 390 | 11 | - |
| MBP 35 T4 0,37kW | 270 | 220 | 355 | 150 | 230 | 390 | 11 | - |
| MBP 35 T6 0,18kW | 270 | 210 | 355 | 150 | 230 | 390 | 11 | - |
| MBP 40 T4 0,55kW | 295 | 240 | 325 | 170 | 250 | 365 | 11 | - |
| MBP 40 T6 0,25kW | 295 | 220 | 325 | 170 | 250 | 365 | 11 | - |
| MBP 45 T2 5,5kW | 330 | 415 | 370 | 270 | 340 | 410 | - | 11 |
| MBP 45 T4 1,1kW | 330 | 290 | 370 | 170 | 250 | 410 | 11 | - |
| MBP 45 T6 0,37kW | 330 | 240 | 370 | 170 | 250 | 410 | 11 | - |

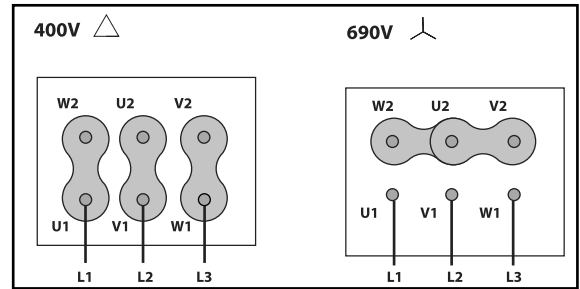
Wiring diagram

Wiring diagram N° 1

230/400V



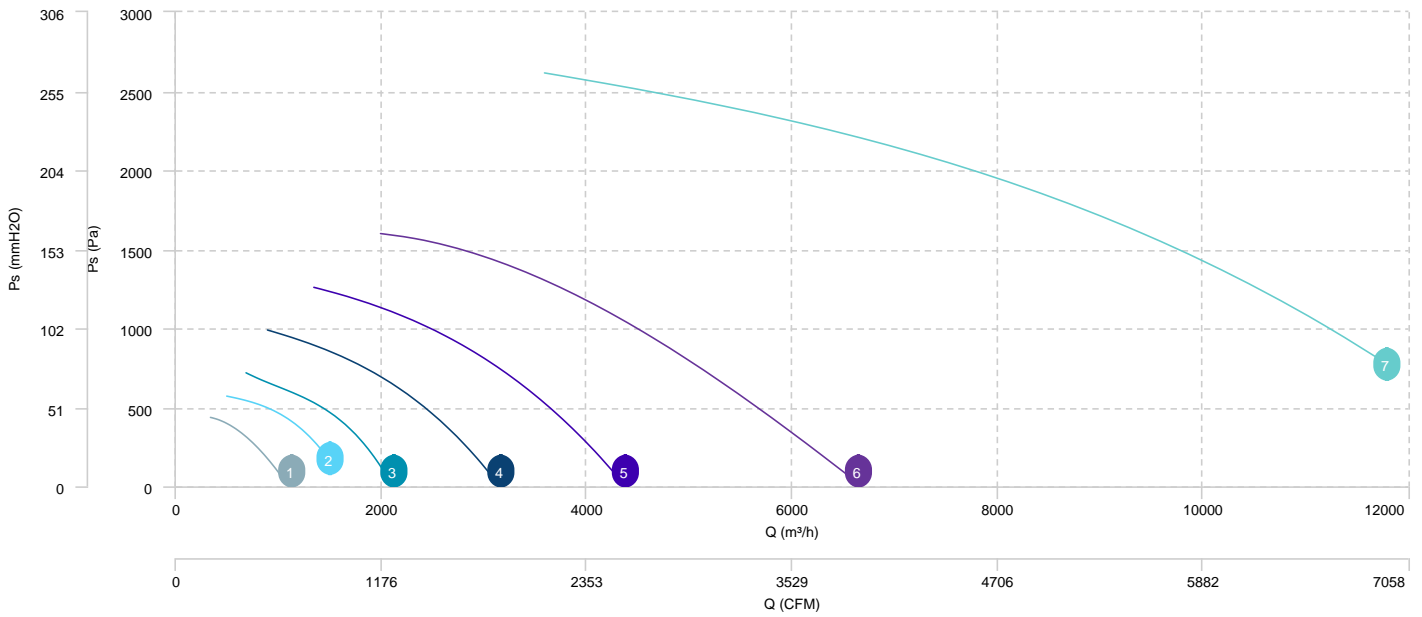
400/690V



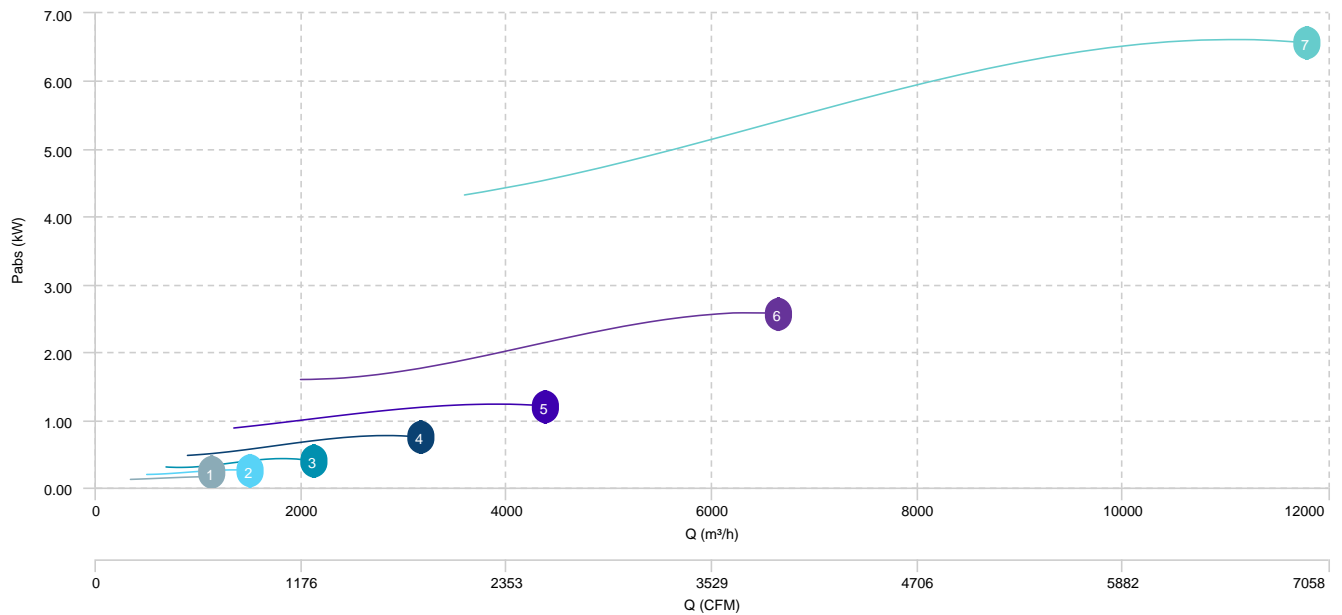
CHARACTERISTIC CURVE

| | | | | | | | |
|---|------------------|---|------------------|---|------------------|---|------------------|
| 1 | MBP 20 T2 0,18kW | 2 | MBP 22 T2 0,25kW | 3 | MBP 25 T2 0,37kW | 4 | MBP 28 T2 0,75kW |
| 5 | MBP 31 T2 1,5kW | 6 | MBP 35 T2 2,2kW | 7 | MBP 45 T2 5,5kW | | |

AIR FLOW - PRESSURE

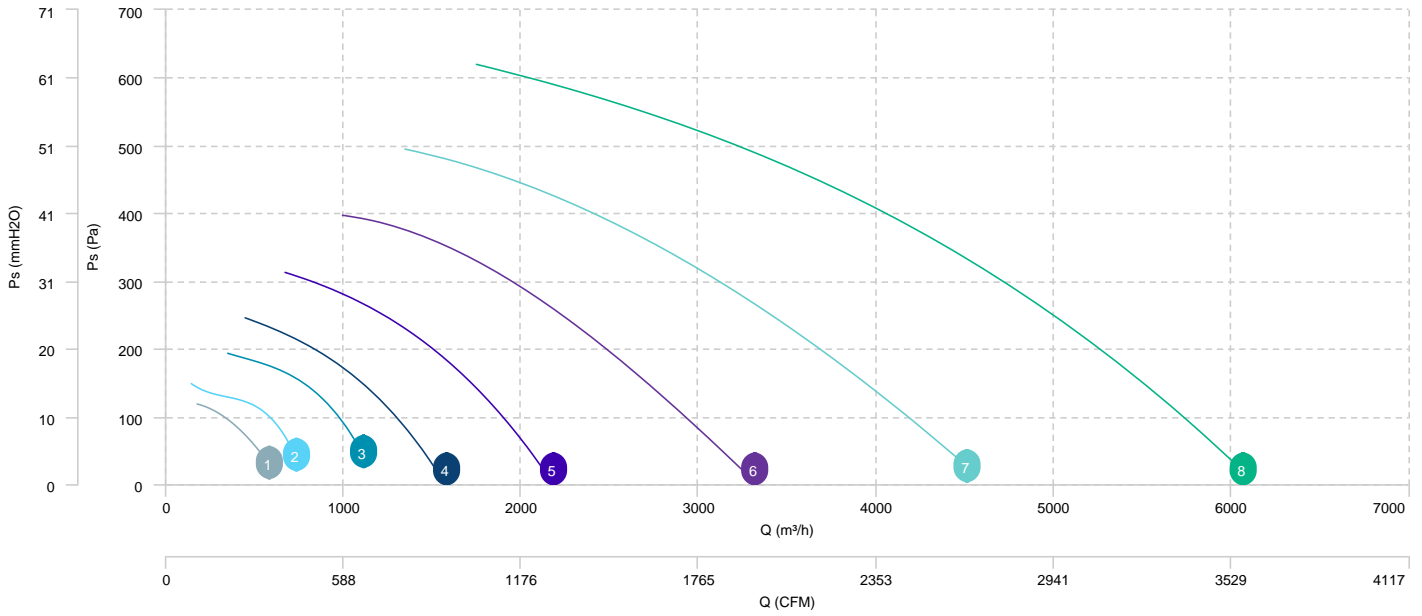


AIR FLOW - ABSORBED POWER

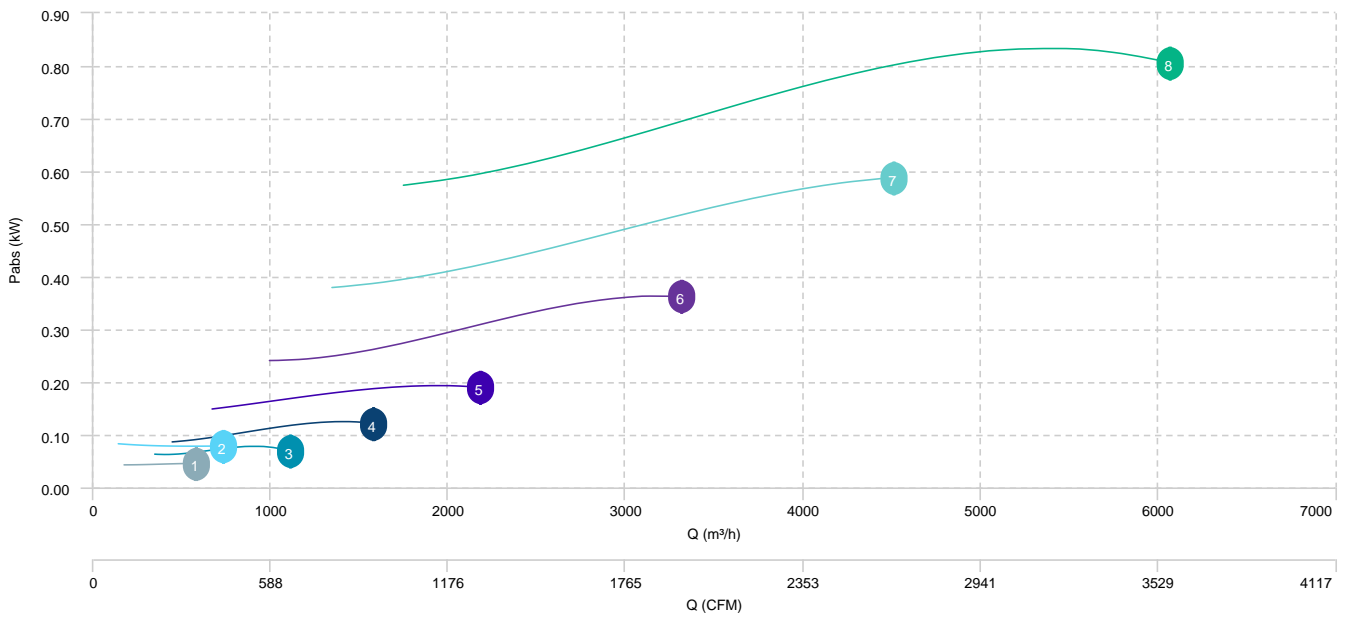


| | | | | | | | |
|---|------------------|---|------------------|---|------------------|---|------------------|
| 1 | MBP 20 T4 0,12kW | 2 | MBP 22 T4 0,12kW | 3 | MBP 25 T4 0,12kW | 4 | MBP 28 T4 0,18kW |
| 5 | MBP 31 T4 0,25kW | 6 | MBP 35 T4 0,37kW | 7 | MBP 40 T4 0,55kW | 8 | MBP 45 T4 1,1kW |

AIR FLOW - PRESSURE

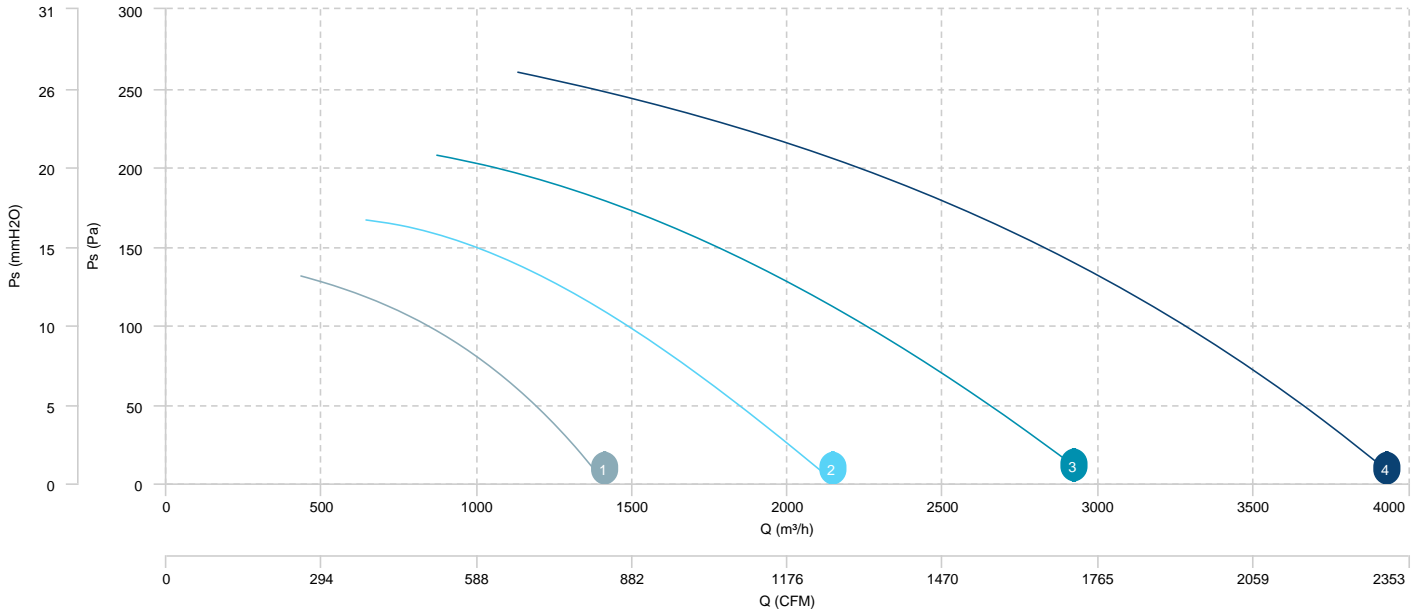


AIR FLOW - ABSORBED POWER

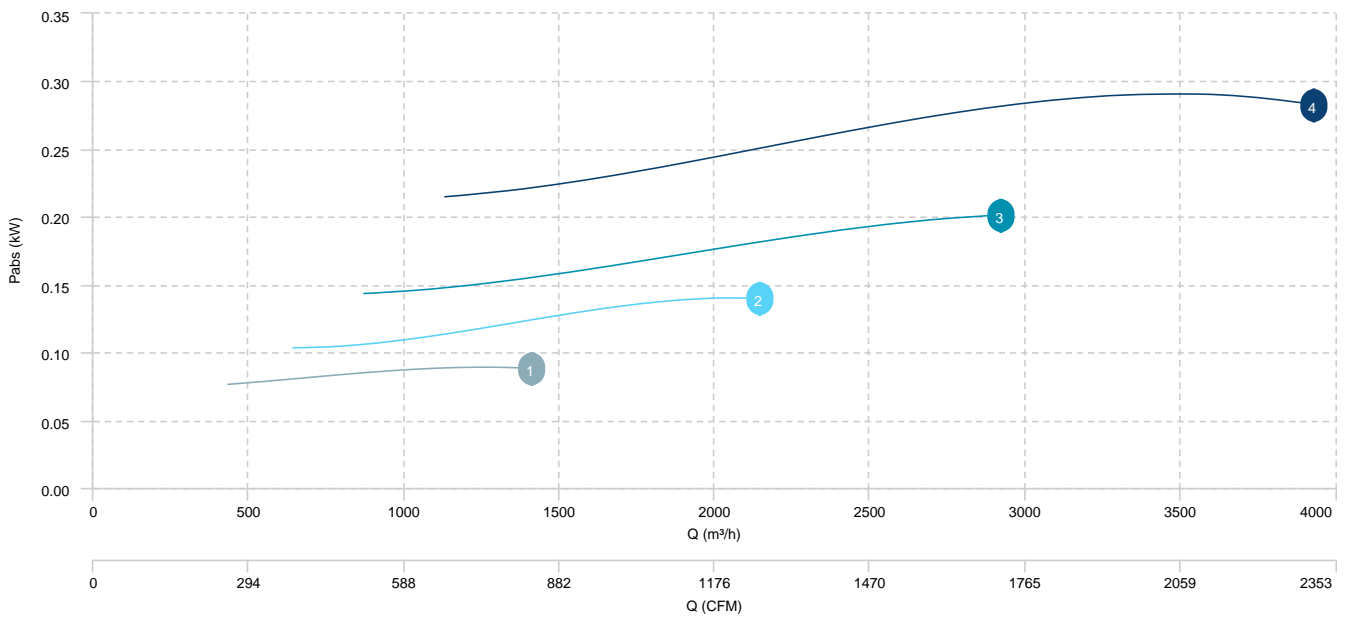


- 1 MBP 31 T6 0,18kW
- 2 MBP 35 T6 0,18kW
- 3 MBP 40 T6 0,25kW
- 4 MBP 45 T6 0,37kW

AIR FLOW - PRESSURE



AIR FLOW - ABSORBED POWER



Sound data

Sound / 2 poles

| Sound power Lw dB (A) | | | | | | | | | | |
|-----------------------|-------|-------|--------|--------|--------|---------|---------|---------|---------|-------|
| Model | | 63 Hz | 125 Hz | 250 Hz | 500 Hz | 1000 Hz | 2000 Hz | 4000 Hz | 8000 Hz | Total |
| MBP 20 T2 0,18kW | Inlet | 62 | 74 | 80 | 85 | 85 | 81 | 73 | 63 | 90 |
| MBP 22 T2 0,25kW | Inlet | 66 | 78 | 84 | 90 | 89 | 85 | 77 | 67 | 94 |
| MBP 25 T2 0,37kW | Inlet | 69 | 81 | 87 | 93 | 92 | 88 | 80 | 70 | 97 |
| MBP 28 T2 0,75kW | Inlet | 73 | 85 | 91 | 97 | 96 | 93 | 84 | 74 | 102 |
| MBP 31 T2 1,5kW | Inlet | 73 | 85 | 91 | 97 | 96 | 93 | 84 | 74 | 102 |
| MBP 35 T2 2,2kW | Inlet | 78 | 90 | 95 | 102 | 101 | 97 | 89 | 79 | 106 |
| MBP 45 T2 5,5kW | Inlet | 74 | 86 | 95 | 95 | 97 | 94 | 85 | 75 | 102 |

Sound / 4 poles

| Sound power Lw dB (A) | | | | | | | | | | |
|-----------------------|-------|-------|--------|--------|--------|---------|---------|---------|---------|-------|
| Model | | 63 Hz | 125 Hz | 250 Hz | 500 Hz | 1000 Hz | 2000 Hz | 4000 Hz | 8000 Hz | Total |
| MBP 20 T4 0,12kW | Inlet | 48 | 60 | 68 | 69 | 71 | 67 | 59 | 49 | 76 |
| MBP 22 T4 0,12kW | Inlet | 51 | 63 | 72 | 72 | 74 | 71 | 62 | 52 | 79 |
| MBP 25 T4 0,12kW | Inlet | 55 | 67 | 75 | 76 | 78 | 74 | 66 | 56 | 83 |
| MBP 28 T4 0,18kW | Inlet | 57 | 70 | 77 | 78 | 80 | 76 | 68 | 58 | 85 |
| MBP 31 T4 0,25kW | Inlet | 57 | 70 | 77 | 78 | 81 | 77 | 69 | 58 | 85 |
| MBP 35 T4 0,37kW | Inlet | 62 | 74 | 82 | 83 | 85 | 81 | 73 | 63 | 90 |
| MBP 40 T4 0,55kW | Inlet | 66 | 78 | 86 | 87 | 89 | 86 | 77 | 67 | 94 |
| MBP 45 T4 1,1kW | Inlet | 66 | 78 | 86 | 87 | 89 | 85 | 77 | 67 | 94 |

Sound / 6 poles

| Sound power Lw dB (A) | | | | | | | | | | |
|-----------------------|-------|-------|--------|--------|--------|---------|---------|---------|---------|-------|
| Model | | 63 Hz | 125 Hz | 250 Hz | 500 Hz | 1000 Hz | 2000 Hz | 4000 Hz | 8000 Hz | Total |
| MBP 31 T6 0,18kW | Inlet | 48 | 37 | 66 | 69 | 72 | 68 | 60 | 50 | 76 |
| MBP 35 T6 0,18kW | Inlet | 53 | 68 | 70 | 74 | 76 | 72 | 64 | 54 | 80 |
| MBP 40 T6 0,25kW | Inlet | 57 | 72 | 74 | 78 | 80 | 76 | 68 | 58 | 84 |
| MBP 45 T6 0,37kW | Inlet | 53 | 68 | 70 | 74 | 76 | 72 | 64 | 54 | 80 |