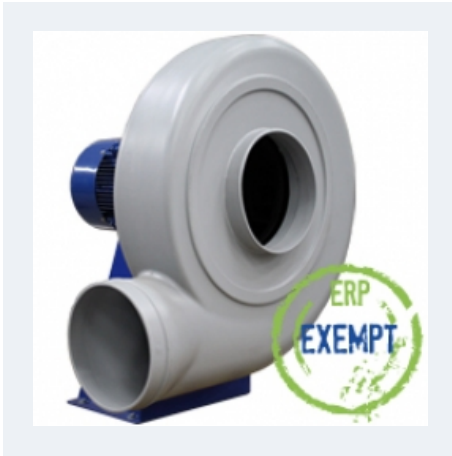


## MBPC



### MEDIUM PRESSURE FAN WITH FORWARD IMPELLER AND IN PLASTIC CONSTRUCTION

#### MANUFACTURING FEATURES:

- PE plastic housing (antistatic PE-el for ATEX units).
  - Forward curved impeller in PP plastic.
  - Motor support made of rolled steel sheet with epoxy powder finishing coat.
  - Stainless steel nuts and bolts.
  - Standard asynchronous squirrel-cage motor, IP-55, class F insulation.
- Standard voltages 230/400V 50Hz.  
Standard orientation: LG270.

#### APPLICATIONS:

Designed for inline installation, they are suitable for:

- Corrosive air transport.
- Chemical and petrochemical industry.
- Laboratories and gas cabinets.
- Maximum working temperature: 50°C.

#### UNDER REQUEST:

- Single phase motors (up to 1,5kW).
- 60Hz fans and special voltages fans.
- 2 speed motors.
- Stainless steel motor support.
- Orientation: RD0, RD45, RD90, RD135, RD180, RD225, RD270, RD315, LG0, LG45, LG90, LG135, LG180. LG225, LG315.
- Casing made of PP.

## Accessories



INT



SFC

## Technical data

### Three-phase motor / 2 poles

Code	Model	R.P.M.	Rated I. (A) 400V	Rated power kW	Max. Airflow m3/h	Sound db (A)*	Weight	Connect. diagram
502302014	MBPC 20 T2 0,25kW	2850	0,65	0,25	620	68	9	1
502302517	MBPC 25 T2 0,75kW	2850	1,67	0,75	1.230	73	13	1
502302818	MBPC 28 T2 1,1kW	2850	2,55	1,10	1.700	78	19	1
502303119	MBPC 31 T2 1,5kW	2850	3,48	1,50	2.710	82	26	1
502303527	MBPC 35 T2 2,2kW	2850	4,98	2,20	2.710	81	50	1

### Three-phase motor / 4 poles

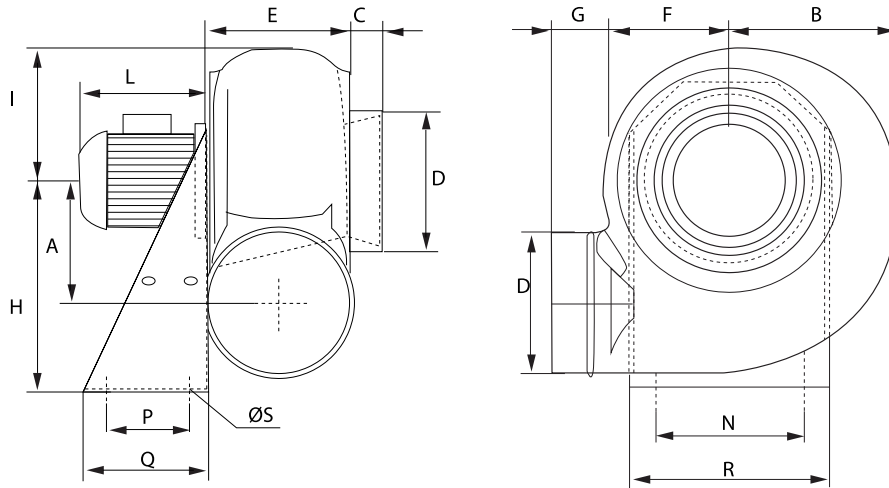
Code	Model	R.P.M.	Rated I. (A) 400V	Rated power kW	Max. Airflow m3/h	Sound db (A)*	Weight	Connect. diagram
502302039	MBPC 20 T4 0,12kW	1370	0,46	0,12	320	52	9	1
502302540	MBPC 25 T4 0,18kW	1370	0,62	0,18	630	57	10	1
502302840	MBPC 28 T4 0,18kW	1370	0,62	0,18	870	62	14	1
502303141	MBPC 31 T4 0,25kW	1400	0,79	0,25	1.520	67	19	1
502303542	MBPC 35 T4 0,37kW	1450	1,07	0,37	2.110	65	40	1
502304044	MBPC 40 T4 0,75kW	1410	2	0,75	2.560	69	33	1
502304545	MBPC 45 T4 1,5kW	1450	3,65	1,50	3.900	71	65	1
502305054	MBPC 50 T4 2,2kW	1450	5	2,20	5.250	75	100	1
502305661	MBPC 56 T4 5,5kW	1450	12	5,50	8.990	77	115	1

### Three-phase motor / 6 poles

Code	Model	R.P.M.	Rated I. (A) 400V	Rated power kW	Max. Airflow m3/h	Sound db (A)*	Weight	Connect. diagram
502303167	MBPC 31 T6 0,12kW	930	0,62	0,12	1.000	56	19	1
502304069	MBPC 40 T6 0,25kW	920	0,92	0,25	1.680	58	30	1
502305072	MBPC 50 T6 0,75kW	900	2,18	0,75	3.440	63	90	1
502305678	MBPC 56 T6 2,2kW	900	5,6	2,20	5.900	66	95	1

**Notes:**  
 \* Total sound pressure level at the point of maximum flow measured in dB(A) in the suction measured in free field at a distance of 6m from the source

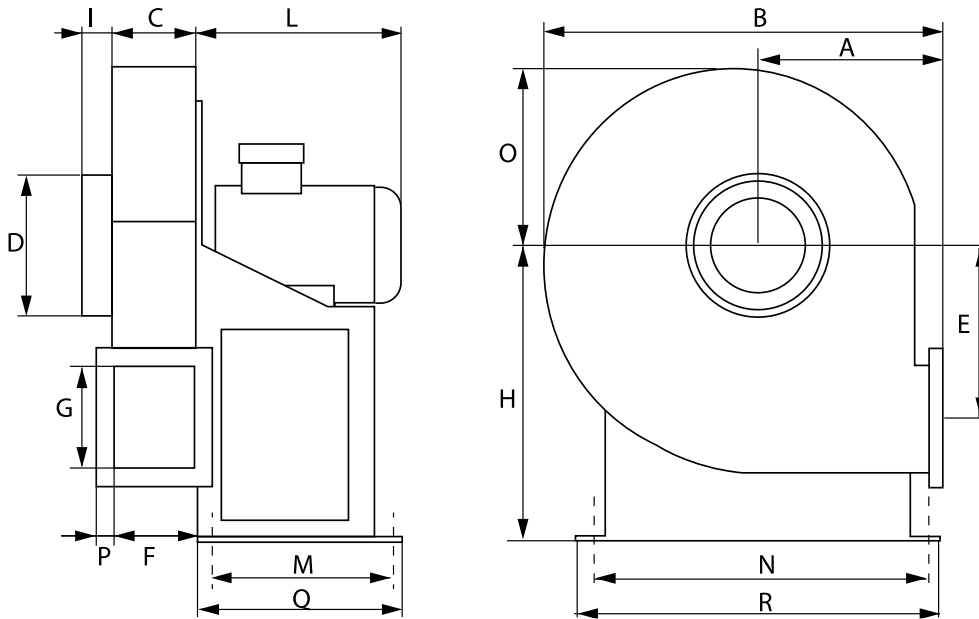
## Dimensions



Model	A	B	C	DØ	E	F	G	H	I
MBPC 20 T2 0,25kW	142	187	40	125	120	150	60	250	165
MBPC 20 T4 0,12kW	142	187	40	125	120	150	60	250	165
MBPC 25 T2 0,75kW	183	228	40	160	153	188	60	310	210
MBPC 25 T4 0,18kW	183	228	40	160	153	188	60	310	210
MBPC 28 T2 1,1kW	208	274	40	180	160	204	60	350	230
MBPC 28 T4 0,18kW	208	274	40	180	160	204	60	350	230
MBPC 31 T2 1,5kW	230	310	40	200	170	220	60	410	245
MBPC 31 T4 0,25kW	230	310	40	200	170	220	60	410	245
MBPC 31 T6 0,12kW	230	310	40	200	170	220	60	410	245
MBPC 40 T4 0,75kW	290	380	40	250	194	265	80	495	330
MBPC 40 T6 0,25kW	290	380	40	250	194	265	80	495	330

Model	L	N	P	Q	R	ØS
MBPC 20 T2 0,25kW	195	200	100	140	235	11
MBPC 20 T4 0,12kW	190	200	100	140	235	11
MBPC 25 T2 0,75kW	220	255	100	140	290	11
MBPC 25 T4 0,18kW	190	255	100	140	290	11
MBPC 28 T2 1,1kW	190	277	120	190	316	11
MBPC 28 T4 0,18kW	240	277	120	190	316	11
MBPC 31 T2 1,5kW	290	320	150	230	355	11

Model	L	N	P	Q	R	ØS
MBPC 31 T4 0,25kW	210	320	150	230	355	11
MBPC 31 T6 0,12kW	210	320	150	230	355	11
MBPC 40 T4 0,75kW	240	330	170	250	365	11
MBPC 40 T6 0,25kW	220	330	170	250	365	11



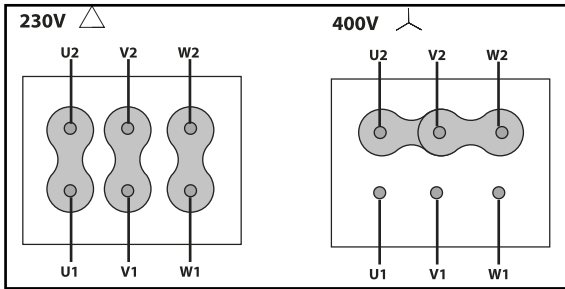
Model	A	B	C	D	E	F	G	H	I
MBPC 35 T2 2,2kW	270	598	185	225	275	175	250	445	50
MBPC 35 T4 0,37kW	270	598	185	225	275	175	252	445	50
MBPC 45 T4 1,5kW	340	722	220	280	292	210	300	550	80
MBPC 50 T4 2,2kW	400	890	270	315	377	260	365	630	80
MBPC 50 T6 0,75kW	400	890	270	315	377	260	365	630	80
MBPC 56 T4 5,5kW	438	998	320	400	416	310	460	710	80
MBPC 56 T6 2,2kW	438	998	320	400	416	310	460	710	80

Model	L	M	N	O	Q	R	p
MBPC 35 T2 2,2kW	270	150	350	285	230	385	40
MBPC 35 T4 0,37kW	210	150	350	40	230	385	-
MBPC 45 T4 1,5kW	260	170	370	40	250	410	-
MBPC 50 T4 2,2kW	355	197	290	50	275	340	-
MBPC 50 T6 0,75kW	320	197	290	50	275	340	-
MBPC 56 T4 5,5kW	480	237	289	50	315	340	-
MBPC 56 T6 2,2kW	380	237	289	50	315	340	-

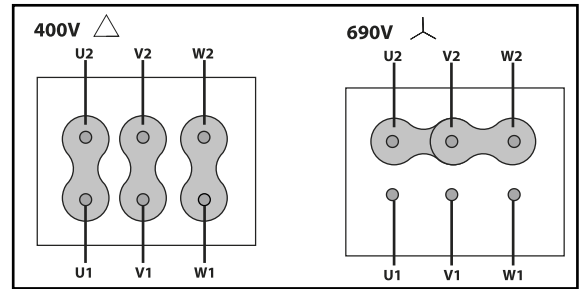
# Wiring diagram

DIAGRAM Nº 1

230/400V



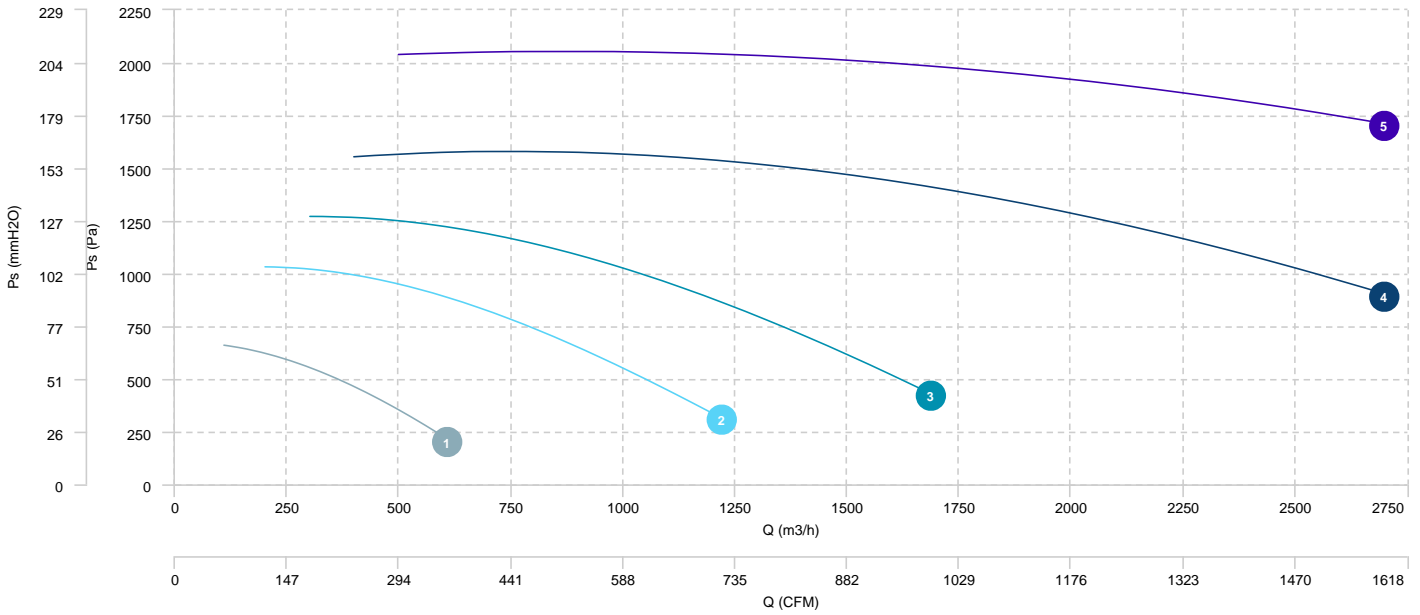
400/690V



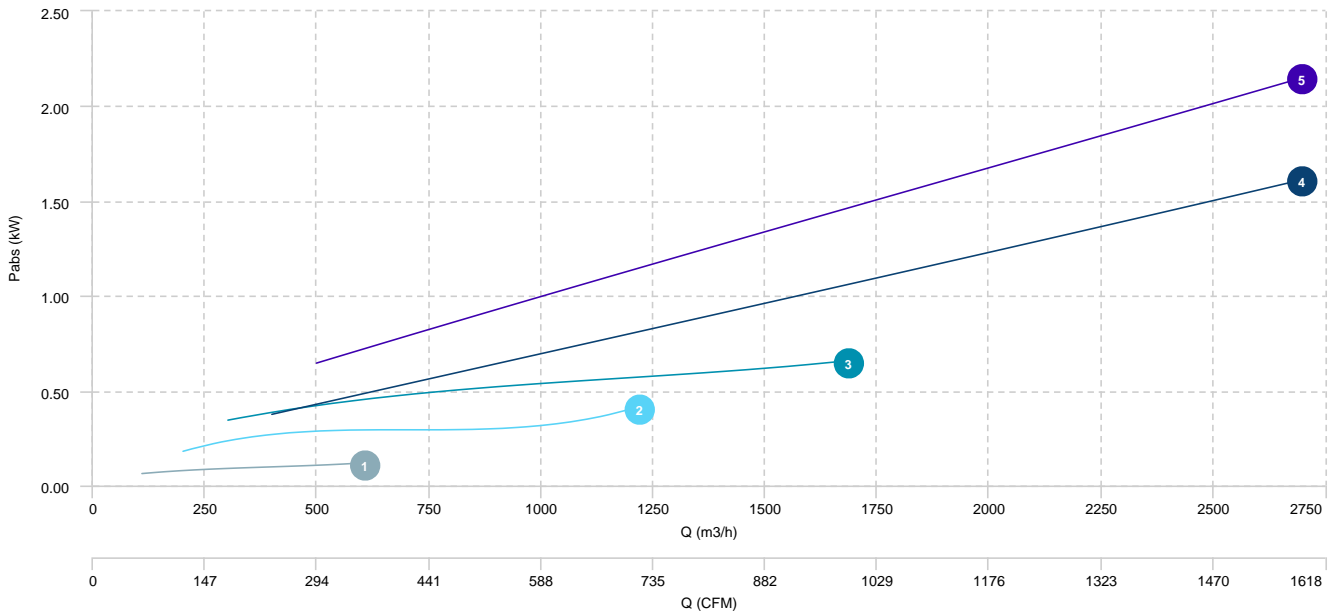
# CHARACTERISTIC CURVE

- 1 MBPC 20 T2 0,25kW
- 2 MBPC 25 T2 0,75kW
- 3 MBPC 28 T2 1,1kW
- 4 MBPC 31 T2 1,5kW
- 5 MBPC 35 T2 2,2kW

## AIR FLOW - PRESSURE

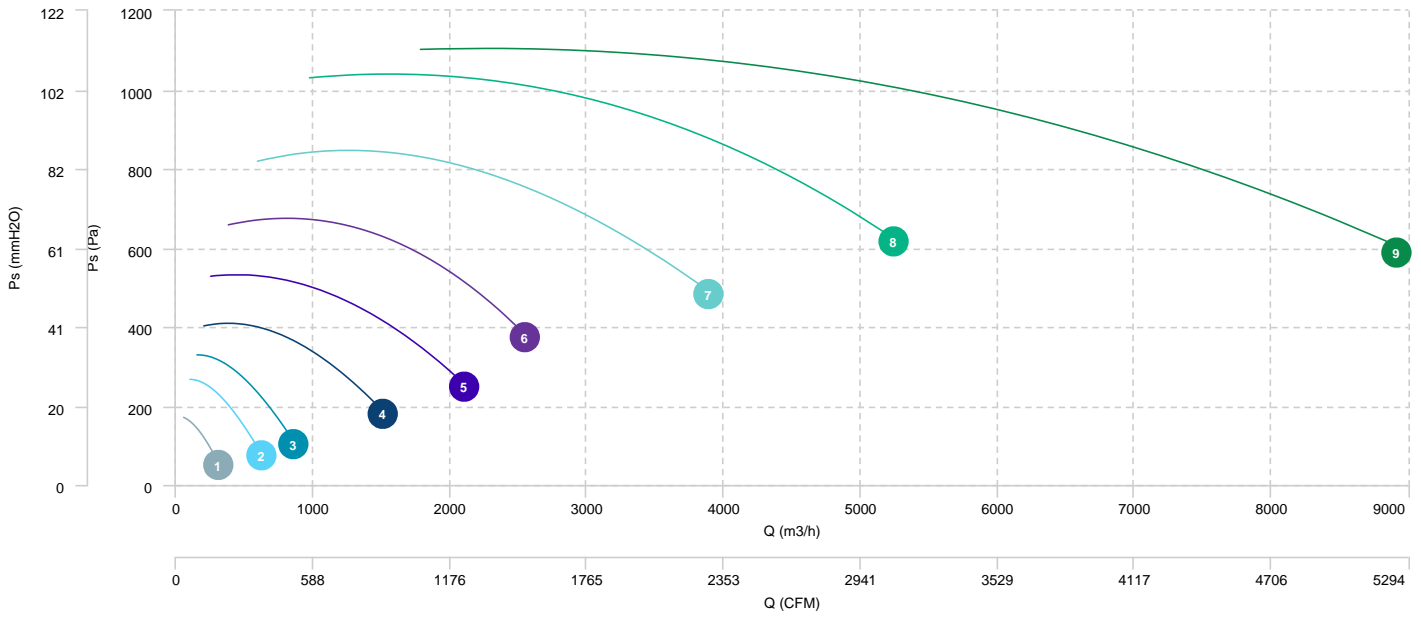


## AIR FLOW - ABSORBED POWER

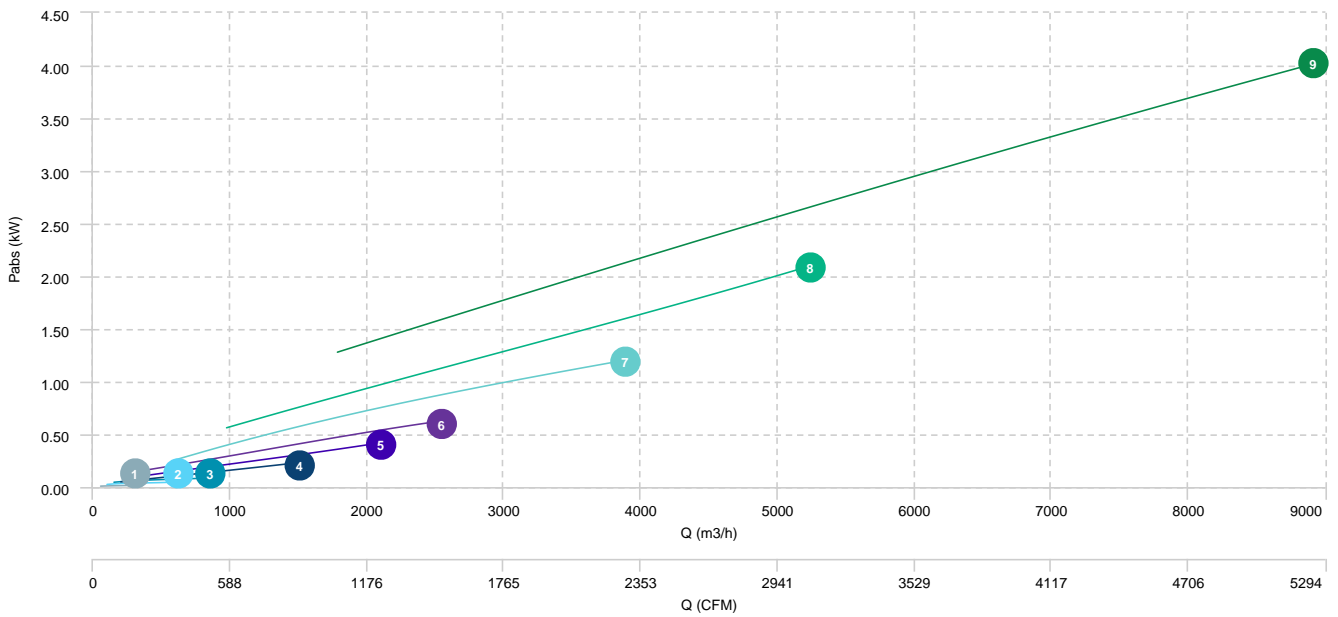


1	MBPC 20 T4 0,12kW	2	MBPC 25 T4 0,18kW	3	MBPC 28 T4 0,18kW	4	MBPC 31 T4 0,25kW
5	MBPC 35 T4 0,37kW	6	MBPC 40 T4 0,75kW	7	MBPC 45 T4 1,5kW	8	MBPC 50 T4 2,2kW
9	MBPC 56 T4 5,5kW						

## AIR FLOW - PRESSURE



## AIR FLOW - ABSORBED POWER



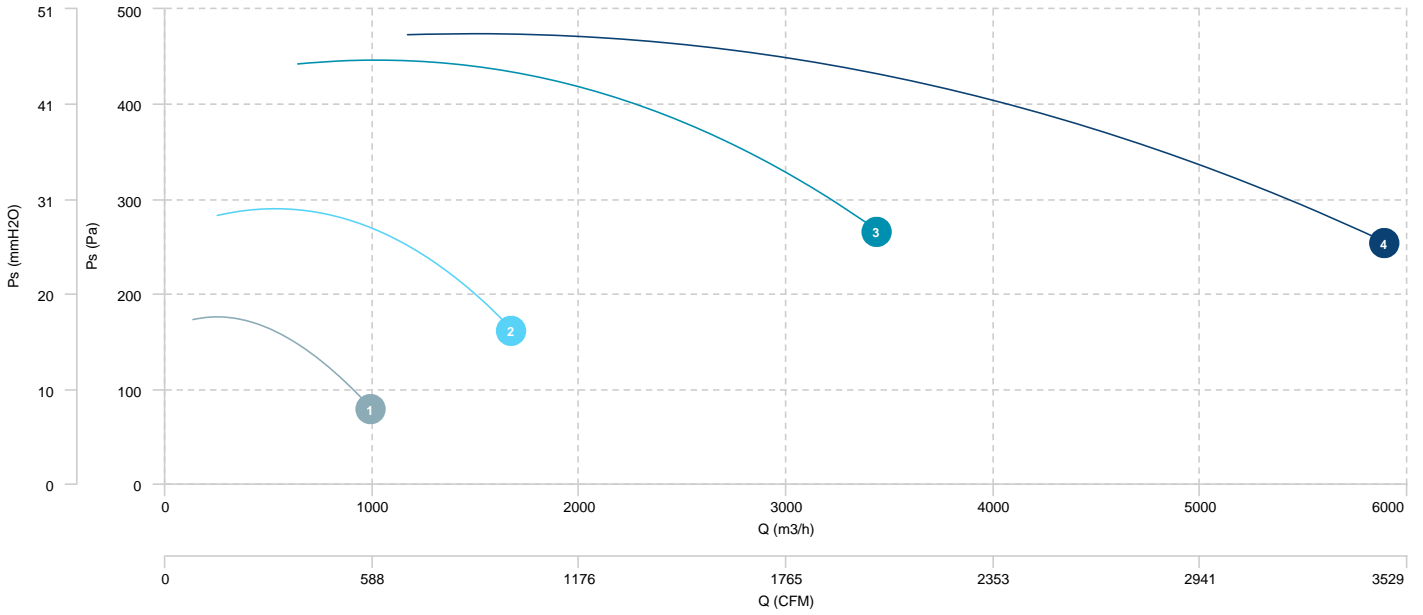
1 MBPC 31 T6 0,12kW

2 MBPC 40 T6 0,25kW

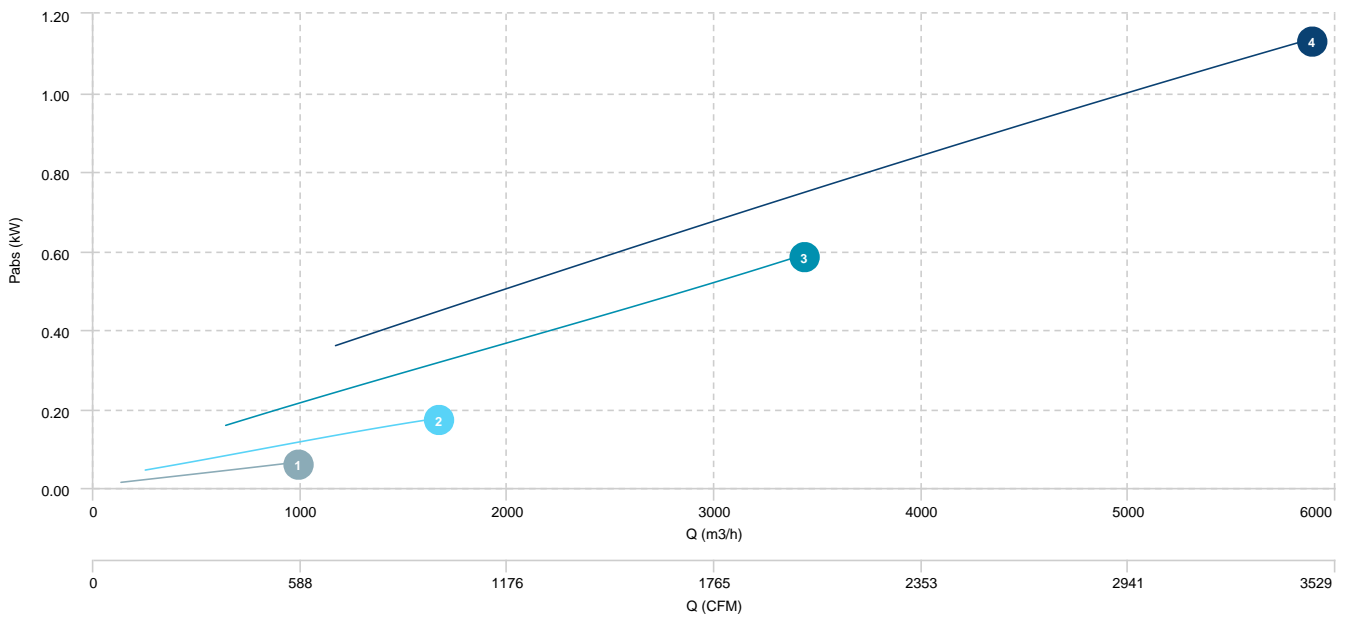
3 MBPC 50 T6 0,75kW

4 MBPC 56 T6 2,2kW

## AIR FLOW - PRESSURE



## AIR FLOW - ABSORBED POWER





## Sound data

### Sound / 2 poles

Sound power Lw dB (A)										
Model		63 Hz	125 Hz	250 Hz	500 Hz	1000 Hz	2000 Hz	4000 Hz	8000 Hz	Total
MBPC 20 T2 0,25kW	Inlet	86	88	86	84	86	78	70	62	94
MBPC 25 T2 0,75kW	Inlet	92	94	92	90	92	84	76	68	99
MBPC 28 T2 1,1kW	Inlet	96	98	96	94	96	88	80	72	104
MBPC 31 T2 1,5kW	Inlet	101	103	101	99	101	93	85	77	108
MBPC 35 T2 2,2kW	Inlet	99	101	99	97	99	91	83	75	107

### Sound / 4 poles

Sound power Lw dB (A)										
Model		63 Hz	125 Hz	250 Hz	500 Hz	1000 Hz	2000 Hz	4000 Hz	8000 Hz	Total
MBPC 20 T4 0,12kW	Inlet	70	72	70	68	70	62	54	46	78
MBPC 25 T4 0,18kW	Inlet	76	78	76	74	76	68	60	52	83
MBPC 28 T4 0,18kW	Inlet	81	83	81	79	81	73	65	57	88
MBPC 31 T4 0,25kW	Inlet	85	87	85	83	85	77	69	61	93
MBPC 35 T4 0,37kW	Inlet	83	85	83	81	83	75	67	59	91
MBPC 40 T4 0,75kW	Inlet	88	90	88	86	88	80	72	64	95
MBPC 45 T4 1,5kW	Inlet	90	92	90	88	90	82	74	66	97
MBPC 50 T4 2,2kW	Inlet	93	95	93	94	90	85	77	69	101
MBPC 56 T4 5,5kW	Inlet	95	97	95	96	92	87	79	71	103

### Sound / 6 poles

Sound power Lw dB (A)										
Model		63 Hz	125 Hz	250 Hz	500 Hz	1000 Hz	2000 Hz	4000 Hz	8000 Hz	Total
MBPC 31 T6 0,12kW	Inlet	75	77	75	73	75	67	59	51	82
MBPC 40 T6 0,25kW	Inlet	77	79	77	75	77	69	61	53	84
MBPC 50 T6 0,75kW	Inlet	82	84	82	83	79	74	66	58	89
MBPC 56 T6 2,2kW	Inlet	85	87	85	86	82	77	69	61	92