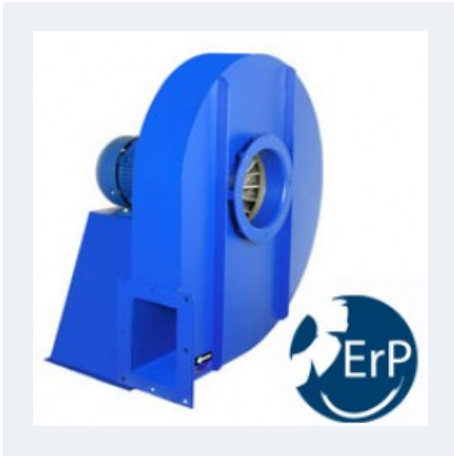


AA45/5-60/7



HIGH PRESSURE WITH ALUMINIUM BACKWARD IMPELLER

MANUFACTURING FEATURES:

- Rolling steel sheet housing.
- Fully welded housing.
- High efficiency simple inlet backward curved impeller manufactured in cast aluminium.
- Epoxy powder finishing coat.
- Standard asynchronous squirrel-cage motor with IP-55 protection and class F insulation. Standard voltages 230/400V 50Hz motors up to 4kW and 400/690V 50Hz for higher powers.
- Standard orientation: LG270

APPLICATIONS:

Designed for inline installation, they are suitable for:

- Industrial applications, extraction or injection of air.
- Cooling of machines and parts.
- Clean air transport.
- Exhaust after filters, separators and cyclones.
- Pneumatic transport.
- Maximum working temperature: carried air: 130°C, ambient 60°C.

Accessories



AC BA-400 BAD EI



INT JE-45 RA RBS



SFC SIL-C / SIL-CN

UNDER REQUEST:

- 60Hz fans and special voltages.
- 2 speed motors.
- Orientation: LG0, LG45, LG90, LG135, LG180. LG225, LG315.

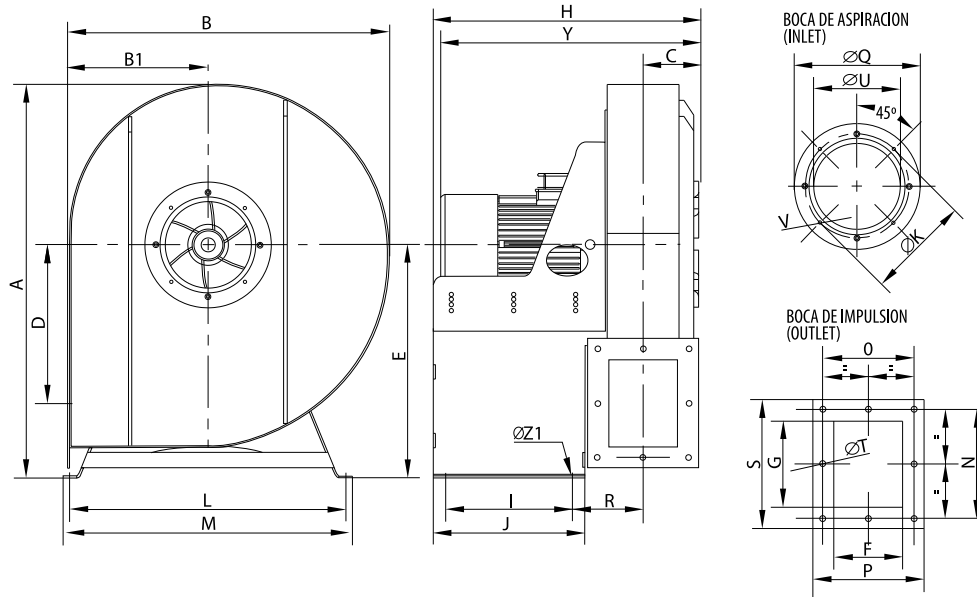
Technical data

Three-phase motor

Code	Model	R.P.M.	Rated I. (A) 400V	Rated power kW	Max. Airflow m3/h	Sound db (A)*	Weight	Connect. diagram
255120106	AA 45/5 T2 2,2kW	2800	4,58	2,20	1.680	83	62,50	1
255120120	AA 45/5 T2 3kW	2870	5,92	3	2.760	83	69,50	1
255150106	AA 50/5 T2 4kW	2890	7,63	4	2.930	86	79	1
255150120	AA 50/5 T2 5,5kW	2900	10,6	5,50	4.650	86	92	1
255520120	AA 60/7 T2 11kW	2930	20,8	11	5.480	90	141	1

Notes:
 * Total sound pressure level at the point of maximum flow measured in dB(A) in the suction measured in free field at a distance of 6m from the source

Dimensions



Model	A	B	B1	C	D	E	F	G	H
AA 45/5 T2 2,2kW	776	635	276,5	115	313	460	135	170	529,5
AA 45/5 T2 3kW	776	635	276,5	115	313	460	135	170	529,5
AA 50/5 T2 4kW	877	716,5	307,25	121	358	520	150	200	583
AA 50/5 T2 5,5kW	877	716,5	307,25	121	358	520	150	200	583
AA 60/7 T2 11kW	922,5	777,5	347,75	132,5	383	535	170	170	640,5

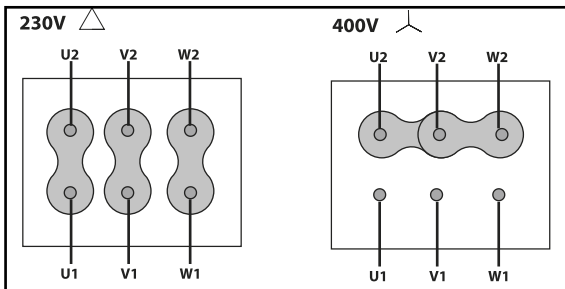
Model	I	J	KØ	L	M	N	O	P	QØ
AA 45/5 T2 2,2kW	250	300	205	545	570	215	180	219	249
AA 45/5 T2 3kW	250	300	205	545	570	215	180	219	249
AA 50/5 T2 4kW	275	325	258	589	614	256	206	246	292
AA 50/5 T2 5,5kW	275	325	258	589	614	256	206	246	292
AA 60/7 T2 11kW	315	365	280	589	614	226	226	266	325

Model	R	S	TØ	UØ	V	Y	Z1Ø
AA 45/5 T2 2,2kW	139,5	254	11	170	M6	504,5	11
AA 45/5 T2 3kW	139,5	254	11	170	M6	514,5	11
AA 50/5 T2 4kW	162	280	11	210	M6	548	11
AA 50/5 T2 5,5kW	162	280	11	210	M6	603	11
AA 60/7 T2 11kW	168	266	11	246	M6	760,5	11

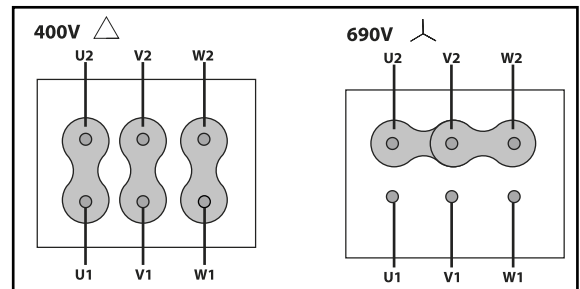
Wiring diagram

DIAGRAM Nº 1

230/400V



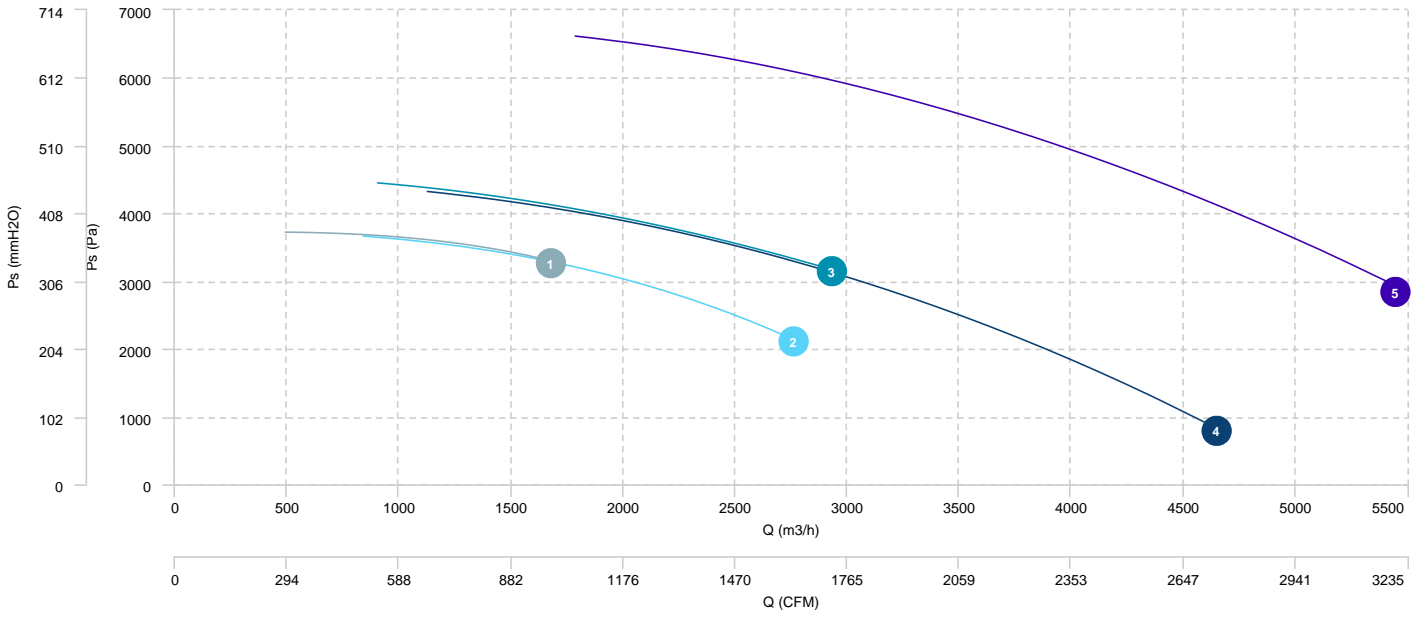
400/690V



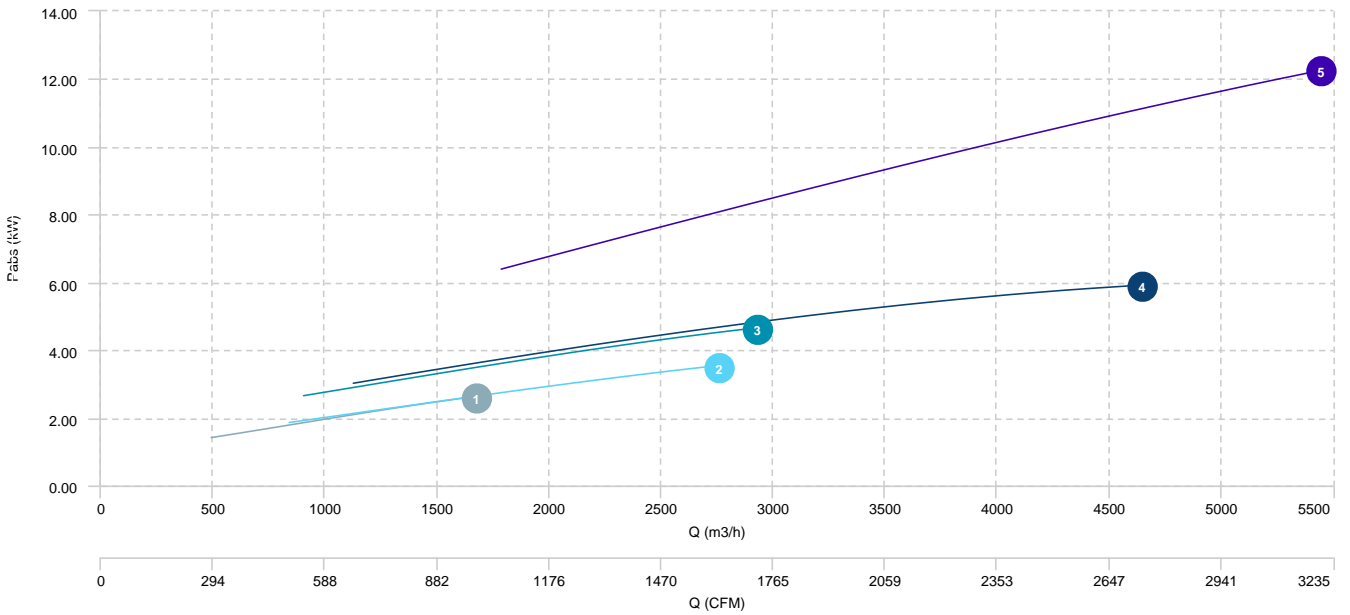
CHARACTERISTIC CURVE

1	AA 45/5 T2 2,2kW	2	AA 45/5 T2 3kW	3	AA 50/5 T2 4kW	4	AA 50/5 T2 5,5kW
5	AA 60/7 T2 11kW						

AIR FLOW - PRESSURE



AIR FLOW - ABSORBED POWER



Sound data

Sound power Lw dB (A)										
Model		63 Hz	125 Hz	250 Hz	500 Hz	1000 Hz	2000 Hz	4000 Hz	8000 Hz	Total
AA 45/5 T2 2,2kW	Inlet	62	74	91	97	106	104	98	90	109
AA 45/5 T2 3kW	Inlet	63	75	92	98	106	104	98	90	109
AA 50/5 T2 4kW	Inlet	66	78	95	101	109	107	101	93	112
AA 50/5 T2 5,5kW	Inlet	66	78	95	101	109	107	102	93	112
AA 60/7 T2 11kW	Inlet	70	82	99	105	113	111	106	97	116

erp data

ERP	
Fan type	Centrifugal fan backward blades with casing
Installation category	B
Efficiency category	Total
The fan has to be installed with FSC	No

Model	Motor power (kW)	Maximum efficiency point data						
		Max. efficiency (%)	Efficiency grade (N) (N)	Air Flow (m3/h)	Pt (Pa)	Pabs (kW)	speed (rpm)	Specific ratio
AA 45/5 T2 2,2kW	2,2	64,06	70,14	1.680	3.510,56	2,64	2800	1,00
AA 45/5 T2 3kW	3,0	65,37	70,96	2.002,29	3.332,06	2,93	2870	1,00
AA 50/5 T2 4kW	4,0	64,35	67,83	2.930	3.448,96	4,66	2890	1,00
AA 50/5 T2 5,5kW	5,5	61,90	65,54	2.554,83	3.687,91	4,49	2900	1,00
AA 60/7 T2 11kW	11,0	65,27	65,67	3.391,86	5.770,59	9,15	2930	1,00