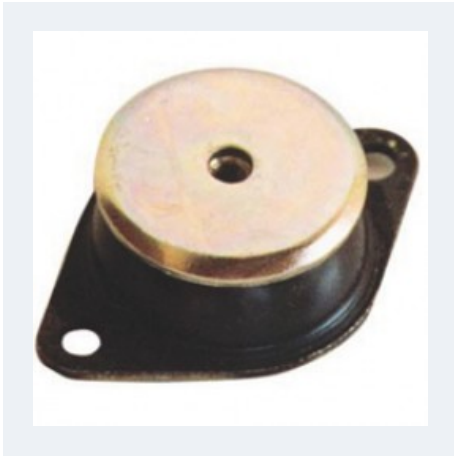


AVR



ANTI-VIBRATION RUBBER BLOCK

AVR is a support with radial and axial elasticity, appropriate in case of elastic suspensions of vibrating machines with horizontal components.

ADVANTAGES

- Easy plugging to the machine with the floor supports; possibility to delete all fixations.
- Fast mounting of the holder and easy display of the machine to the wanted place.
- Economic
- Three standard versions that allow choosing the holder according to the load and frequency of the vibrations:
 1. Soft: hardness A 45
 2. Medium: hardness B 60
 3. Hard: hardness C 75
- Possibility to fold the elasticity by displaying 2 holders AVR at each point of the support.
- Avoids the transmission of vibration to the building's structure.
- It is suitable for turning machines at high speeds that generate continuous noise.

RANGE

- Range of 17 blocks according to: acceptable unit static loads : from 2 to 1.300 kg.

CONSTRUCTION / COMPOSITION

- The anti-vibration blocks will be in natural rubber protected on the top by a metallic cupel.
- Absorbing part in natural rubber.
- Pre-drilled sole for floor fixing.
- The upper frame is circular and has a passing hole or screw or nut for fastening or holding the machine or the frame, which allows support overloads and protecting the rubber.
- The lower frame has an elliptical shape with two ears in which the drill holes to the ground.
- The two parallel reinforcements are connected by a rubber adhered to, dome shaped.

DESIGNATION

- AVR 60 / 45
diameter (mm) hardness

APPLICATION

- The AVR support has an elasticity substantially equivalent to its axial elasticity and it is effective against all vibrations however their directions is.
- The brackets are preferably mounted in rotary machines which do not have large dynamic imbalances, in which both vertical and transverse elasticity is desirable such as fans, rotary pumps, or frequency torque converters, electric motors, machines tabulations
- Working temperatures: -40°C +70°C
- Reducing the vibration effect, lateral and vertical, on motors or turning machines.
- For 2 speeds motors and rpm > 1 000.

PACKAGING

By bag of 4 blocks.

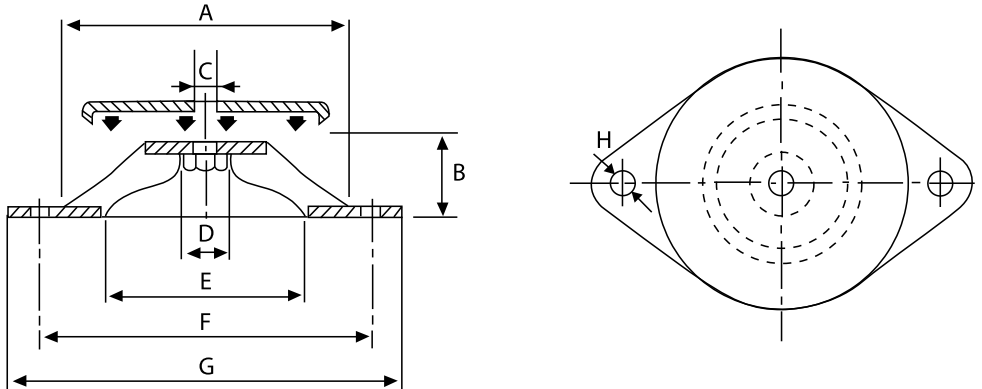
LIMITS OF USE

Rotation speed of the machine: 5000 rpm

Technical data

Code	Model	Weight
FX0018007	AVR 40/45	0,03
FX0018008	AVR 40/60	0,03
FX0018009	AVR 60/45	0,08
FX0018010	AVR 60/60	0,08
FX0018011	AVR 60/75	0,08
FX0018012	AVR 80/45	0,15
FX0018013	AVR 80/60	0,15
FX0018014	AVR 80/75	0,15
FX0017999	AVR 100/60	0,27
FX0018000	AVR 100/75	0,27
FX0018002	AVR 150/60	0,70
FX0018003	AVR 150/75	0,70
FX0018004	AVR 200/45	1,76
FX0018006	AVR 200/75	1,76

Dimensions



Model	A	B	C	D	E	F	G	H
AVR 40/45	40	20	M6	19	29	52	64	6,25
AVR 40/60	40	20	M6	19	29	52	64	6,25
AVR 60/45	60	24	M6	14	34	76	90	6,5
AVR 60/60	60	24	M6	14	34	76	90	6,5
AVR 60/75	60	24	M6	14	34	76	90	6,5
AVR 80/45	80	27	M8	25	65	100	120	8,2
AVR 80/60	80	27	M8	25	65	100	120	8,2
AVR 80/75	80	27	M8	25	65	100	120	8,2
AVR 100/60	100	28	M10	22	70	124	148	10
AVR 100/75	100	28	M10	22	70	124	148	10
AVR 150/60	150	39	M14	34	115	182	214	12
AVR 150/75	150	39	M14	34	115	182	214	12
AVR 200/45	200	44	M18	35	140	240	280	14,5
AVR 200/75	-	-	-	-	-	-	-	-