

PRL - PRL-Q



MERO®


PRL

Descrizione: I ventilatori serie **PRL** sono particolarmente indicati per l'aspirazione di vapori, aria corrosiva anche polverosa (non abrasiva).

Campo di lavoro: Sino a 32.000 m³/h, pressioni medio-alte, rendimento elevato.

Temperatura del fluido: Fino a 60° C in esecuzione **standard** in polietene; **S** in polipropilene per temperature sino a 80° C.

Caratteristiche Costruttive: Coclea completamente stampata senza saldature in materiali: **PP - PPS - PPEl - PE - PEes - PEel** (Vedi legenda a pagina 6), girante a pale rovesce equilibrata staticamente e dinamicamente, costruita in **PP - PVC - acciaio inox - acciaio rivestito in ebanite o fibra di vetro**, supporto motore in lamiera di acciaio con verniciatura o in acciaio inox e l'installazione di un motore elettrico forma B3.

A richiesta: Sono disponibili esecuzioni in conformità alla direttiva ATEX 

Accessorio: Supporto motore in acciaio inox.



Description: **PRL** series fans are particularly designed to extract vapors and corrosive air even if dusty (not abrasive).

Field of application: : Up to 32.000 m³/h, medium-high pressures, high performance.

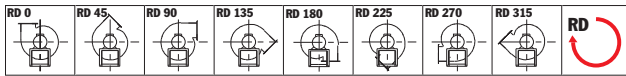
Fluid temperature: Up to 60° C in **standard** execution in polyethene; **S** in polypropylene for temperatures up to 80° C.

Constructive characteristics: The execution previews the use of housing manufactured in materials: **PE - PPEl - PP - PPS - PPEl** (see legend at page 6), welded backward curved blades impeller in material **PP - PVC - Stainless Steel - Steel with Ebonite or fiberglass** covering statically and dynamically balanced and the installation of 2 or 4 poles electric motor - B5 for execution 5.

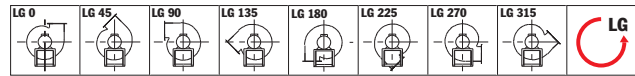
On request: versions according to ATEX directive are available 

Accessory: Motor support made of stainless steel

Direzioni di rotazione (vista lato motore) - Rotation senses (seen from motor side)

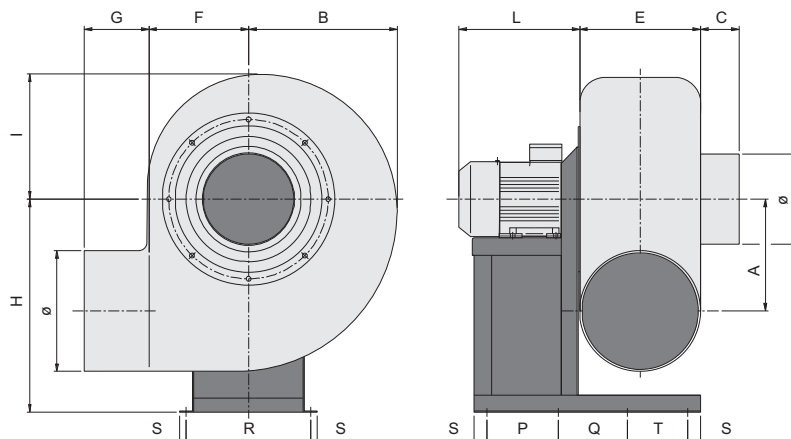


Rotazione oraria - Clockwise rotation sense



Rotazione anti-oraria - Anti-Clockwise rotation sense

DIMENSIONI E PESI DIMENSIONS AND WEIGHTS



DIMENSIONI E PESI

DIMENSIONS AND WEIGHTS

kg*: Peso del ventilatore completo di motore standard - kg*: Fan weight with standard electric motor

TIPO - TYPE		kW inst.	GIRI rpm	VENTILATORE FAN																PESO Weight kg*
VENTILATORE FAN	MOTORE MOTOR			kgf	A	B	C	Ø	E	F	G	H	I	L	P	Q	R	S	T	
PRL 502	160	15/18	2900	360	460	50	400	355	355	80	630	395	550	380	53	440	25	335	250	
	180	22	2900										600	450					275	
PRL 504	100	2,20	1420										325	197	53	289	25	335	120	
PRL 506	80	0,55	880	360	460	50	400	355	355	80	630	395	240	197	53	289	25	335	110	
PRL 562	160	18,5											550	380		440			240	
	180	22	2920	410	490	50	450	365	380	80	710	410	600	450	53	440	25	355	270	
	200	30											640	520		540			320	
PRL 564	112	4	1430	410	490	50	450	365	380	80	710	410	330	237	53	289	25	355	140	
PRL 566	90	1,10	880	410	490	50	450	365	380	80	710	410	290	237	53	289	25	355	120	
PRL 632	180	22	2920										600	450	53	440	25	400	290	
	200	30/37	2920	445	610	50	500	415	420	80	800	505	640	520	53	540	25	400	350	
PRL 634	132	5,50	1450	445	610	50	500	415	420	80	800	505	400	237	53	337	25	400	180	
PRL 636	112	2,20	950										330	237	53	337	25	400	165	
PRL 804	180L	22	1450	665	820	80	700	590	590	100	950	640	600	360	53	862	40	-	430	
PRL 806	160M	7,5	955										510	237	53	862	40	-	430	

CARATTERISTICHE IN MANDATA VENTILATORI SERIE "PRL"

OUTLET CHARACTERISTICS OF FANS "PRL" SERIES

MOTORI A 2/4/6 POLI - 2/4/6 POLES MOTORS

TIPO - TYPE		Qv m³/h																			
VENTILATORE FAN	MOTORE MOTOR	KW inst.	Poli Poles	dB(A)	HT	1500	2500	4000	5000	7000	9000	11000	13000	15000	17000	19000	22000	25000	29000	32000	
PRL 502	160/180	18,5	2	84				370	360	350	330	300	270	230							
PRL 504	100	2,2	4	67		91	91	85	79	59											
PRL 506	80	0,55	6	57		38	35	30	24												
PRL 562	160/180/200	22	2	86				460	460	458	450	450	410	390	350	270					
PRL 564	112	4	4	69			108	104	100	92	76	55									
PRL 566	90	1,1	6	58		47	47	39	37	24											
PRL 632	180/200	30	2	86				580	580	580	570	530	520	515	510	460	430	340			
PRL 634	132	5,5	4	70				149	150	148	140	130	110	90							
PRL 636	112	2,2	6	58			59	59	56	51	40										
PRL 804	180L	22	4	72						240	240	240	239	235	230	225	213	209	180	160	
PRL 806	160M	7,5	6	70					98	98	96	95	90	80	79	72	60				

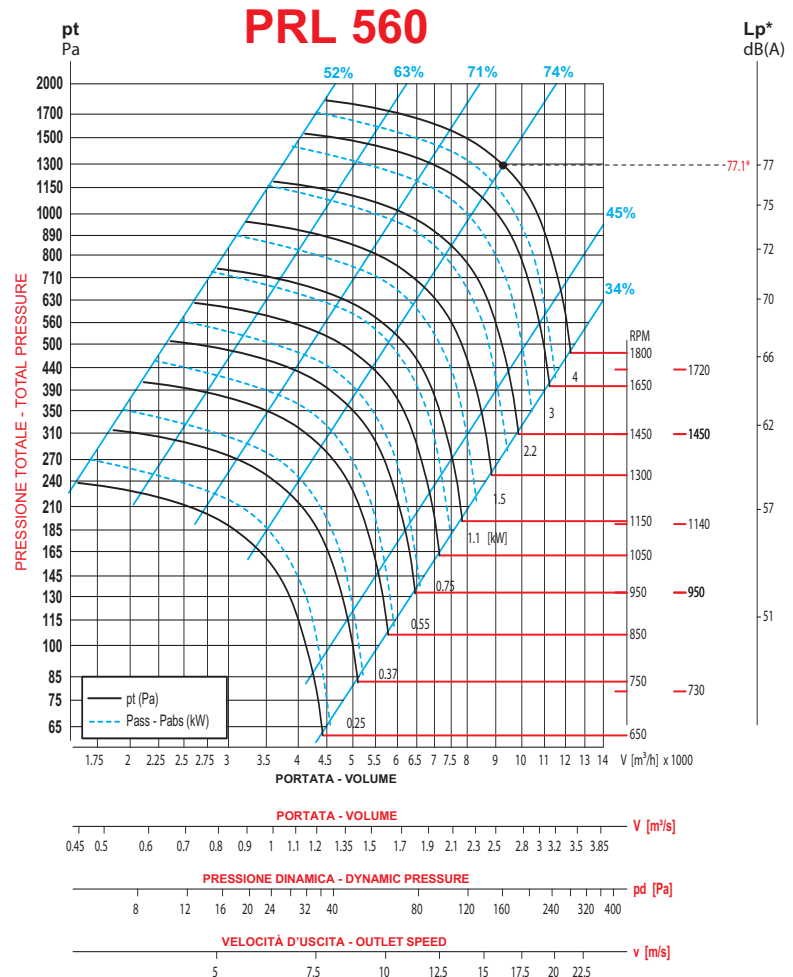
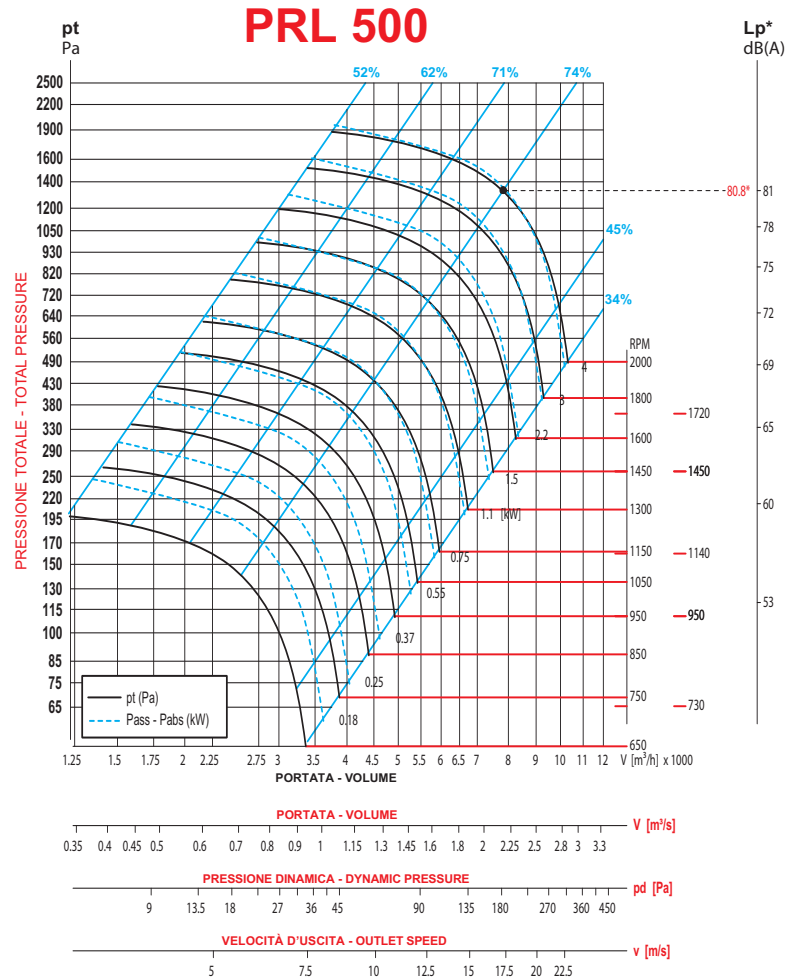
TOLLERANZA SULLA PORTATA ±5% - LOAD TOLERANCE ±5%
TOLLERANZA SULLA RUMOROSITÀ +3 dB(A) - NOISE TOLERANCE +3 dB(A)

pt mmH2O= da Pa

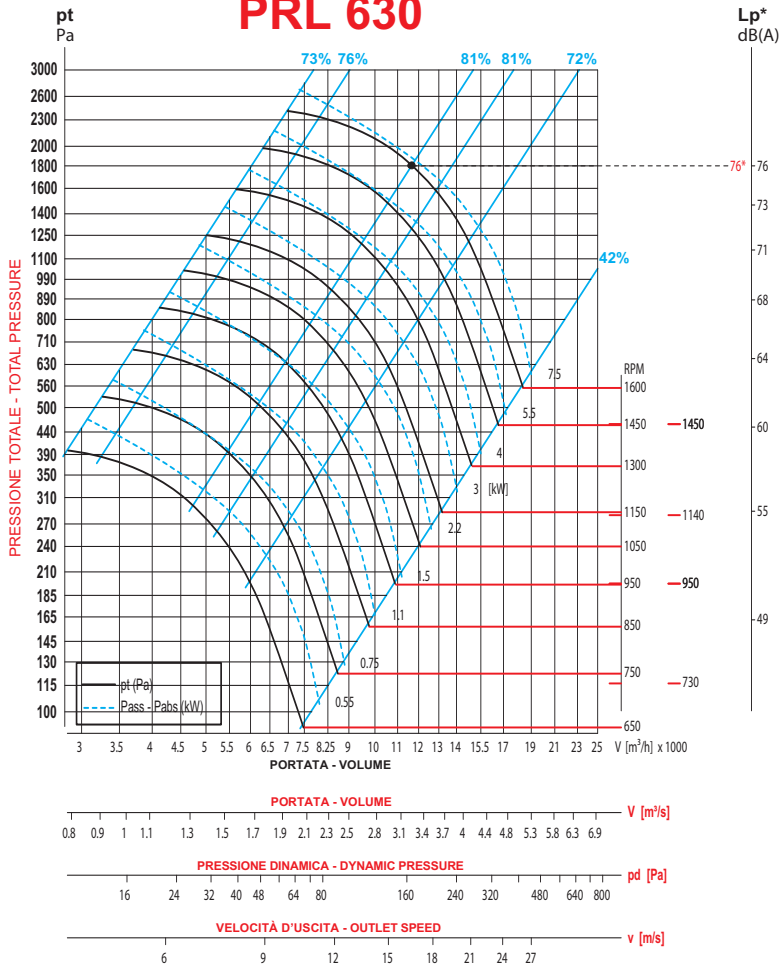
Valori riferiti a:/ Datas referring to: T=15°C; P=1 atm

PRL

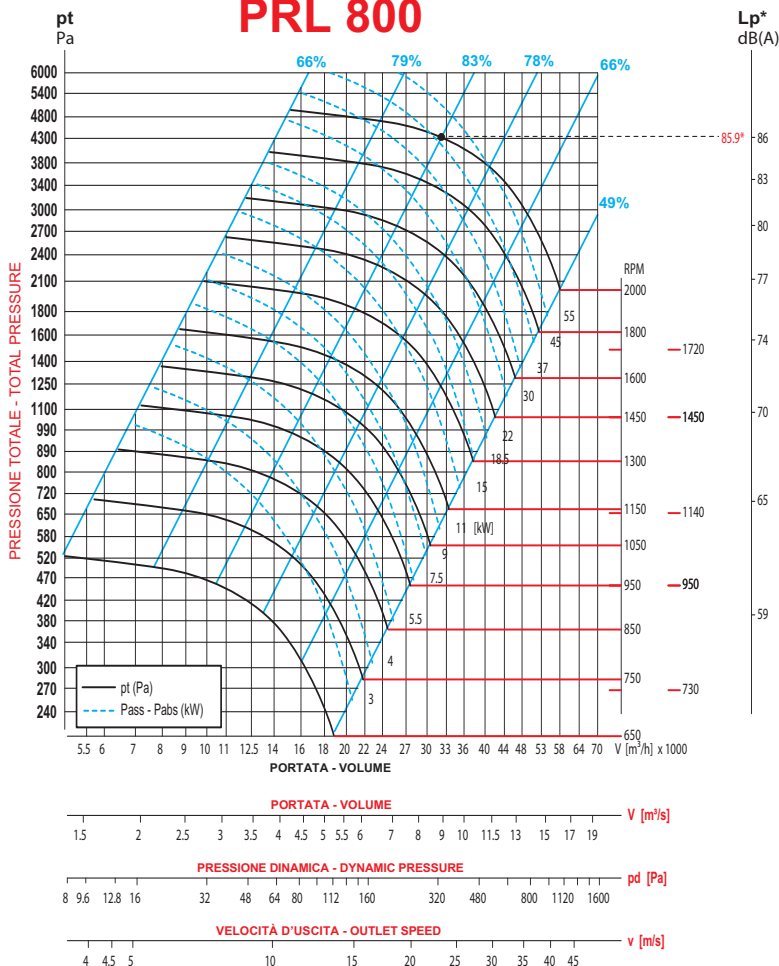
PRESTAZIONI PERFORMANCES



PRL 630



PRL 800




PRL-Q

Descrizione: I ventilatori serie **PRL-Q** sono particolarmente indicati per l'aspirazione di vapori, aria corrosiva anche polverosa (non abrasiva).

Campo di lavoro: Sino a 100.000 m³/h, pressioni medie, rendimento elevato.

Temperatura del fluido: Fino a 60° C in esecuzione **standard** in polietene; **S** in polipropilene per temperature sino a 80° C.

Caratteristiche Costruttive: Coclea costruita senza saldature in materiali: **PP - PPS - PPEl - PE - PEes - PEel** (Vedi legenda a pagina 6), girante a pale rovesce equilibrata staticamente e dinamicamente, costruita in **PP - PVC - acciaio inox - acciaio rivestito in ebanite o fibra di vetro**, supporto motore in lamiera di acciaio con verniciatura o in acciaio inox e l'installazione di un motore elettrico forma B3.

A richiesta: Sono disponibili esecuzioni in conformità alla direttiva ATEX 

Accessorio: Supporto motore in acciaio inox.

Description: **PRL-Q** series fans are particularly designed to extract vapors and corrosive air even if dusty (not abrasive).

Field of application: : Up to 100.000 m³/h, medium pressures, high performance.

Fluid temperature: Up to 60° C in **standard** execution in polyethene; **S** in polypropylene for temperatures up to 80° C.

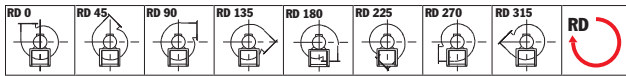
Constructive characteristics: The execution previews the use of housing manufactured in materials: **PE - PEel - PP - PPS - PPEl** (see legend at page 6), welded backward curved blades impeller in material **PP - PVC - Stainless Steel - Steel with Ebonite or fiberglass** covering statically and dynamically balanced and the installation of 2 or 4 poles electric motor - B5 for execution 5.

On request: versions according to ATEX directive are available 

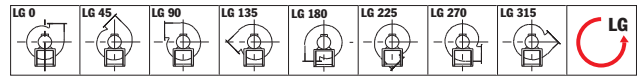
Accessory: Motor support made of stainless steel



Direzioni di rotazione (vista lato motore) - Rotation senses (seen from motor side)

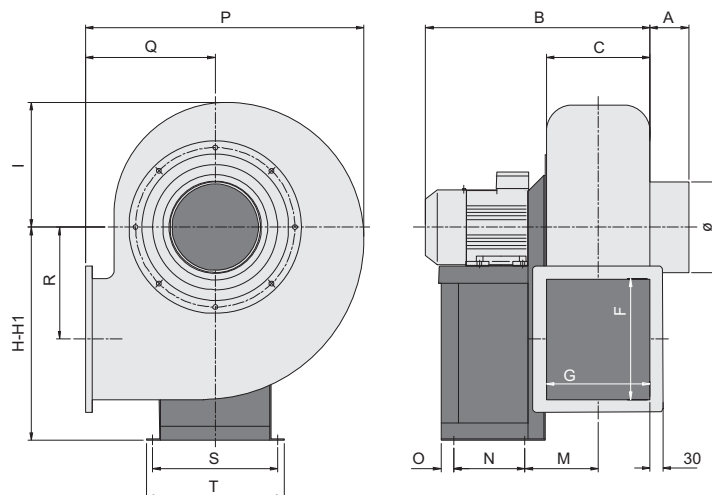


Rotazione oraria - Clockwise rotation sense



Rotazione anti-oraria - Anti-Clockwise rotation sense

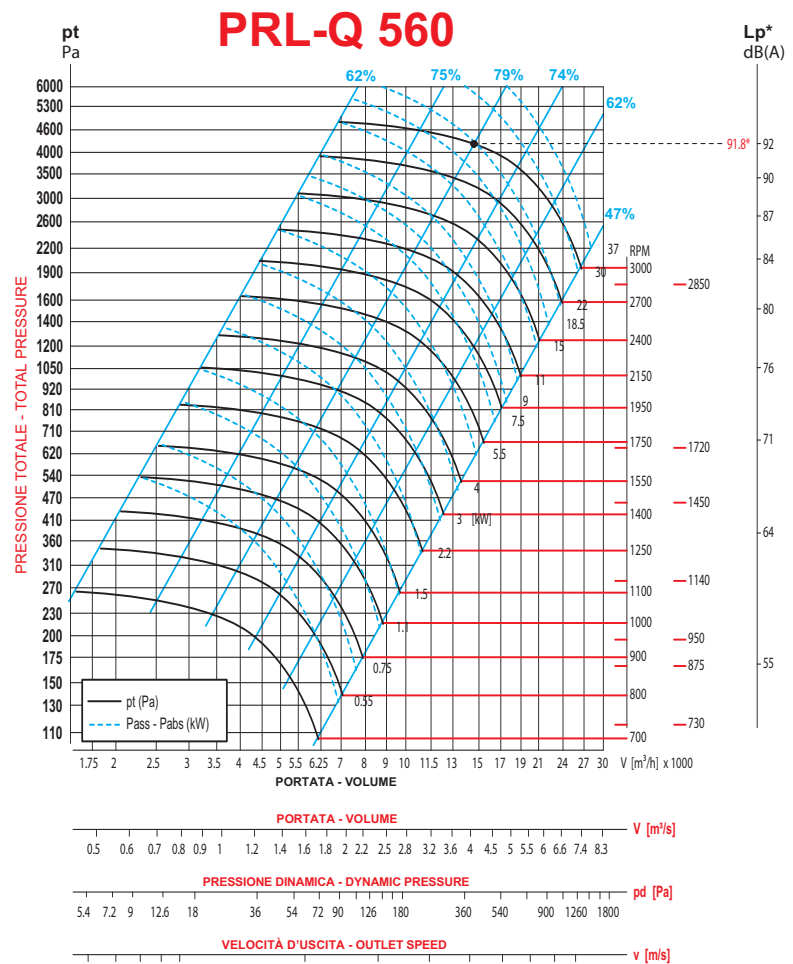
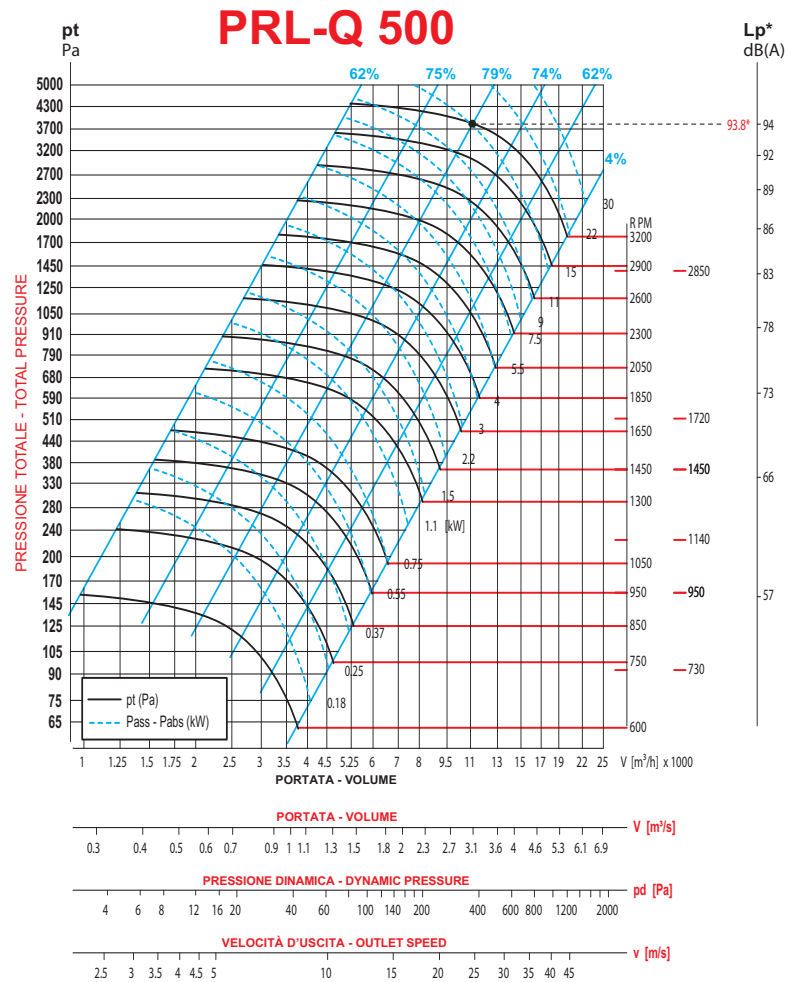
DIMENSIONI E PESI DIMENSIONS AND WEIGHTS



PRL-Q

PRESTAZIONI

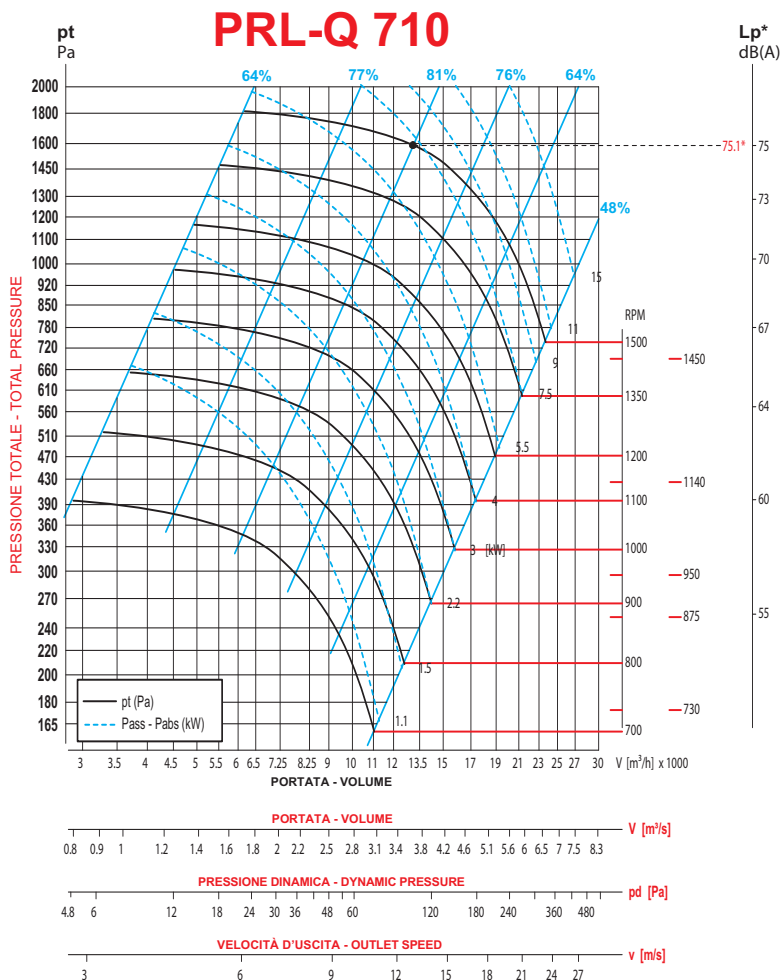
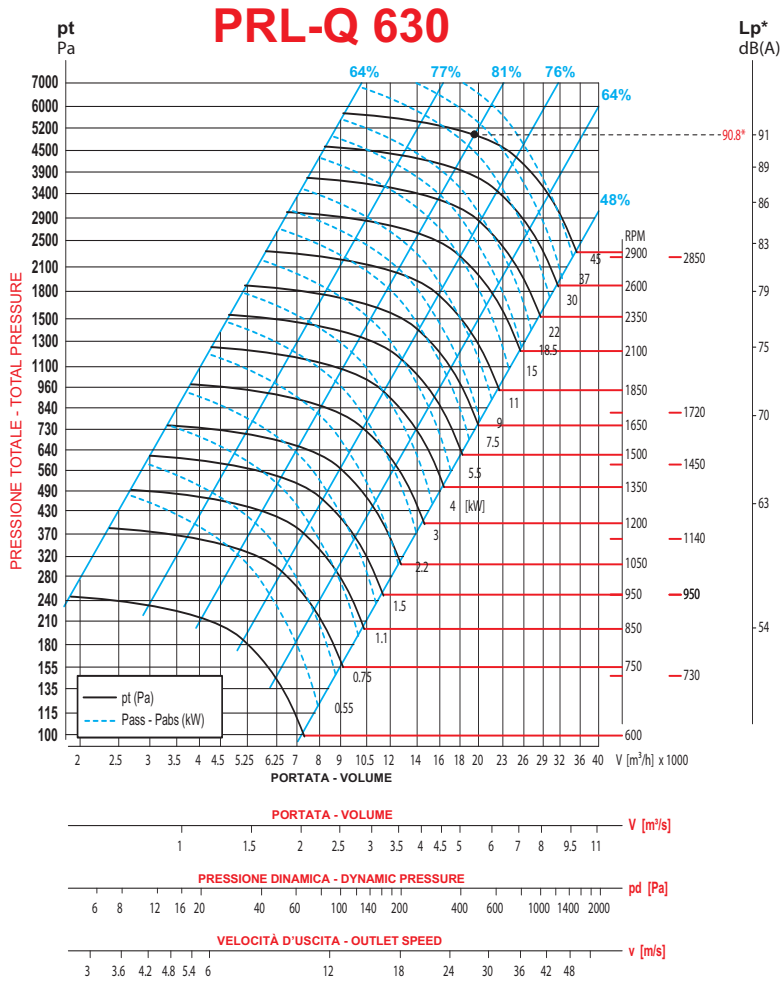
PERFORMANCES



PRL-Q

PRESTAZIONI

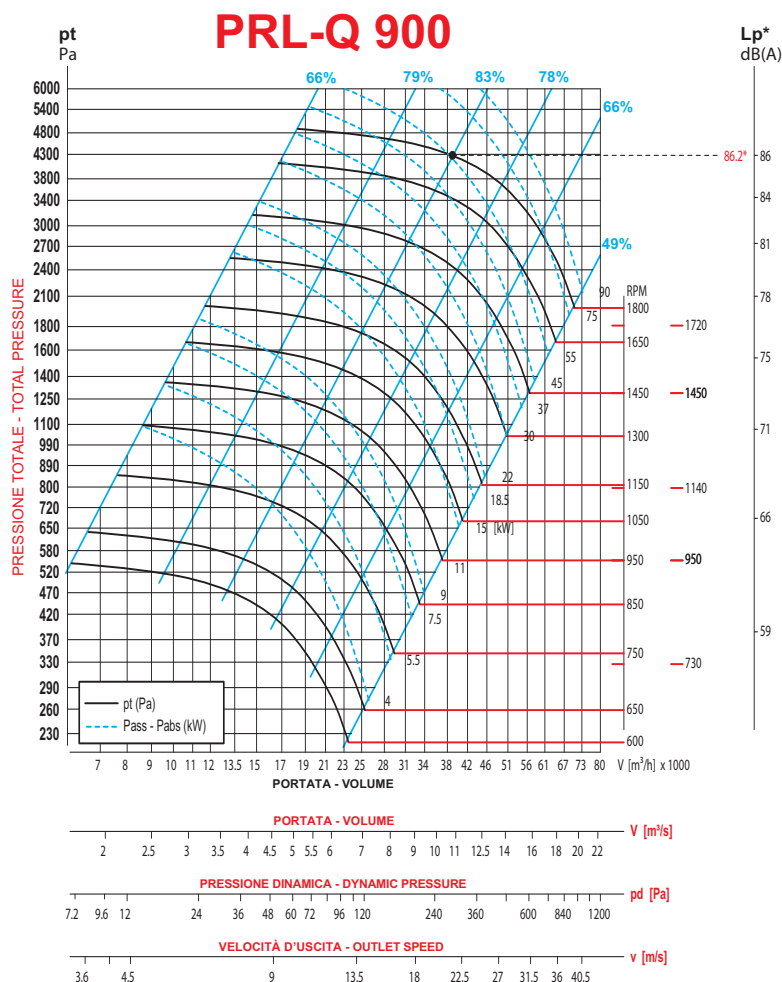
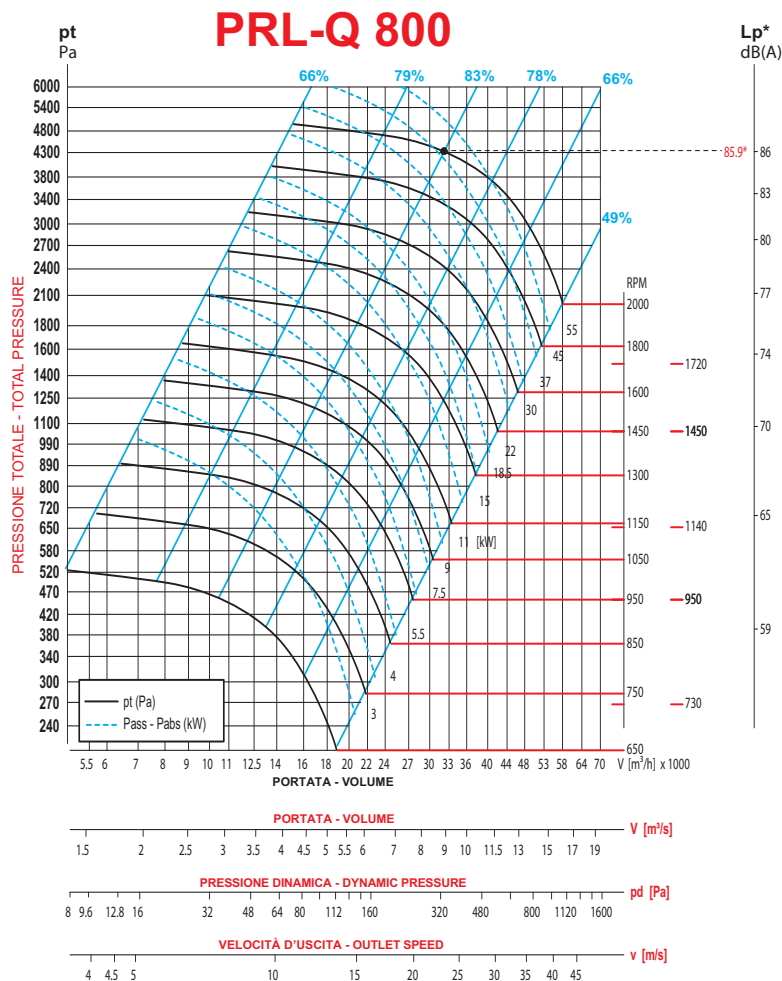
PERFORMANCES



PRL-Q

PRESTAZIONI

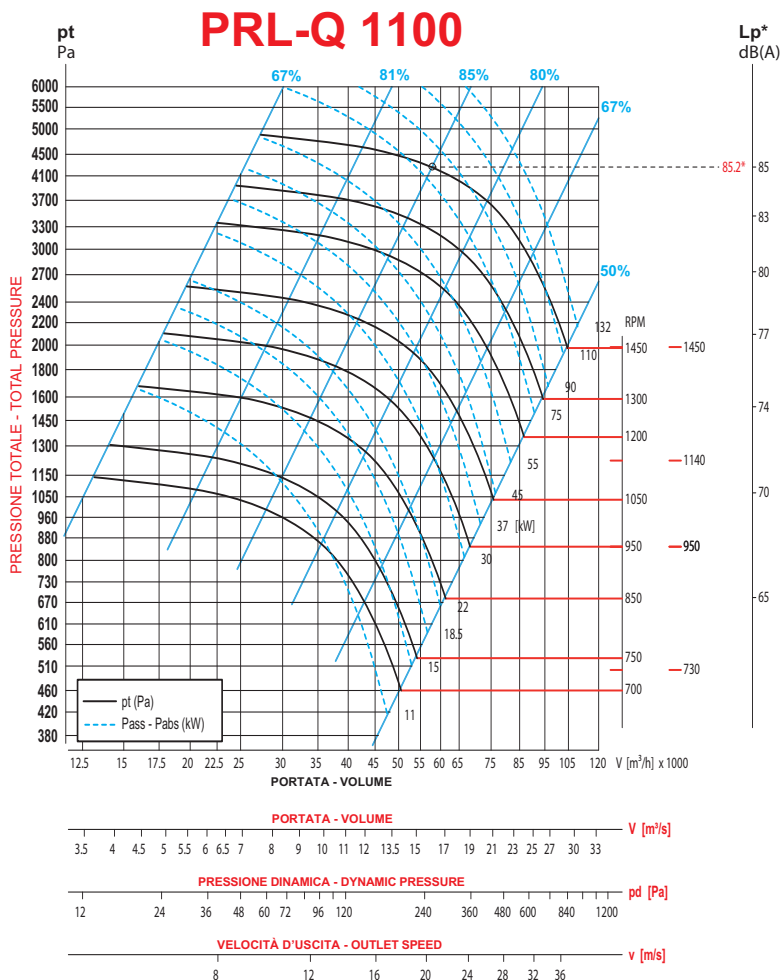
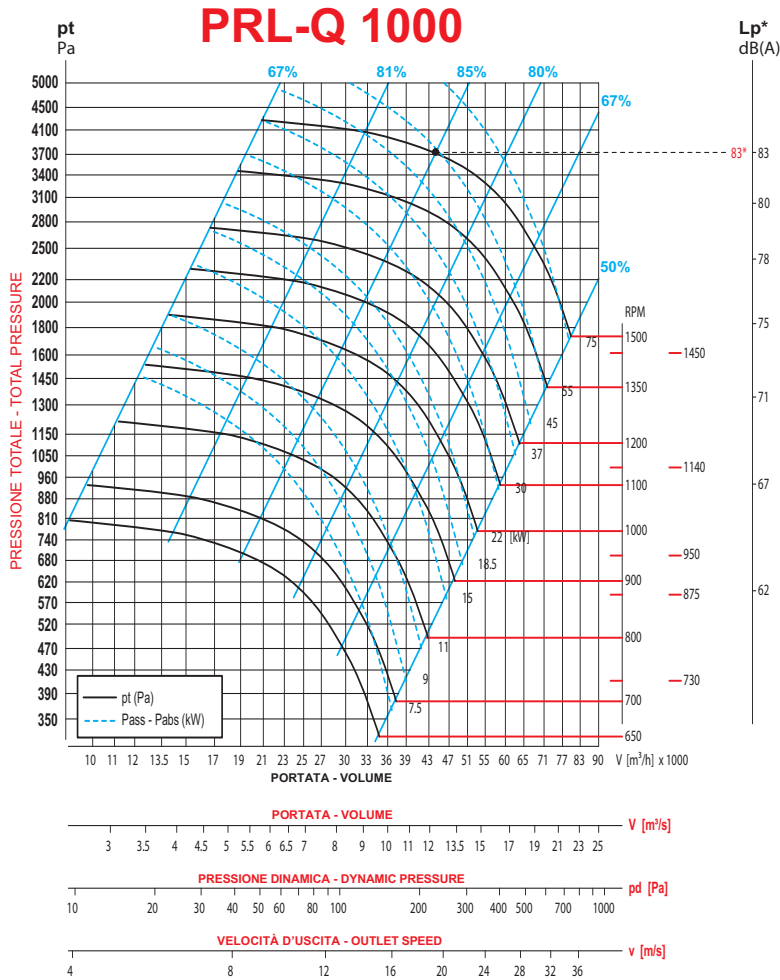
PERFORMANCES



PRL-Q

PRESTAZIONI

PERFORMANCES



PRL-Q

PRESTAZIONI

PERFORMANCES

