

PRU



MERO®

PRU

Descrizione: I ventilatori serie PRU sono particolarmente indicati per l'aspirazione di vapori e aria corrosiva anche polverosa (non abrasiva).

Campo di lavoro: Sino a 6000 m³/h, pressioni medie, rendimento elevato.

Temperatura del fluido: Fino a 60° C in esecuzione **standard** in polietene; **S** in polipropilene per temperature sino a 80° C.

Caratteristiche Costruttive: Coclea completamente stampata senza saldature in materiali: **PP - PPS - PPEI - PE - PEES - PEEL** (Vedi legenda a pagina 6), girante a pale rovesce equilibrata staticamente e dinamicamente, stampata **PP - PPS - PPEI - PVDF**, supporto motore in lamiera di acciaio al carbonio con verniciatura epossidica e l'installazione di un motore elettrico forma B5 in esecuzione 5.

A richiesta: Sono disponibili esecuzioni in conformità alla direttiva ATEX 

Accessorio: Supporto motore in acciaio inox.

Description: PRU series fans are particularly designed to extract vapors and corrosive air even if dusty (not abrasive).

Field of application: Up to 6000 m³/h, medium pressure, high performance.

Fluid temperature: Up to 60° C in **standard** execution in polyethene; **S** in polypropylene for temperatures up to 80° C.

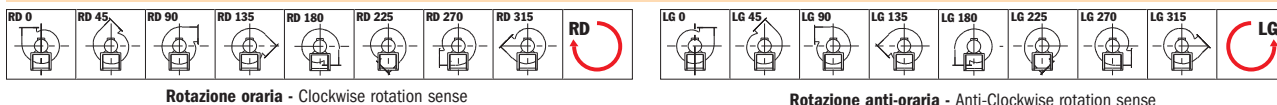
Constructive characteristics: The execution previews the use of housing completely moulded without welding in materials: **PE - PEEL - PP - PPS - PPEI** (see legend at page 6), backward blades impeller moulded in material **PP - PPS - PVDF** statically and dynamically balanced and the installation of 2 or 4 poles electric motor - B5 for execution 5.

On request: versions according to ATEX directive are available 

Accessory: Motor support made of stainless steel



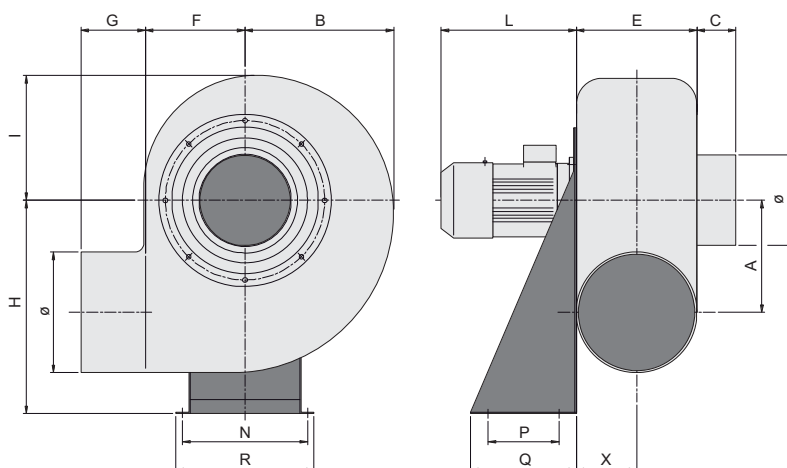
Direzioni di rotazione (vista lato motore) - Rotation senses (seen from motor side)



Rotazione oraria - Clockwise rotation sense

Rotazione anti-oraria - Anti-Clockwise rotation sense

DIMENSIONI E PESI DIMENSIONS AND WEIGHTS



DIMENSIONI E PESI

DIMENSIONS AND WEIGHTS

kg*: Peso del ventilatore completo di motore standard - kg*: Fan weight with standard electric motor
 kg**: Peso del ventilatore completo di motore EExd - kg**: Fan weight with EExd electric motor

TIPO - TYPE		kW inst.	GIRI rpm	VENTILATORE FAN															PESO Weight	
VENTILATORE FAN	MOTORE MOTOR			A	B	C	Ø	E	F	G	H	I	L	N	P	Q	R	S	kg*	kg**
PRU 202	63	0,18	2750	140	180	40	160	150	138	60	250	150	195	200	100	140	235	11	9	17
PRU 204	63	0,12	1370	183	228	40	200	180	170	80	310	190	210	255	100	140	290	11	10	18
PRU 222	63	0,25	2800	183	228	40	200	180	170	80	310	190	210	255	100	140	290	11	13	24
PRU 224	63	0,12	1370	183	228	40	200	180	170	80	310	190	210	255	100	140	290	11	10	18
PRU 252	71	0,37	2800	183	228	40	200	180	170	80	310	190	210	255	100	140	290	11	13	24
PRU 254	63	0,12	1370	208	255	40	225	190	190	80	350	210	230	277	120	190	320	11	14	23
PRU 282	80	0,75	2850	208	255	40	225	190	190	80	350	210	230	277	120	190	320	11	19	33
PRU 284	63	0,18	1370	240	280	40	250	200	210	80	410	230	245	320	150	230	355	11	19	30
PRU 312	90	1,50	2850	240	280	40	250	200	210	80	410	230	245	320	150	230	355	11	26	45
PRU 314	71	0,25	1400	260	312	40	280	220	230	80	445	270	210	350	150	230	385	11	23	34
PRU 352	90	2,20	2870	260	312	40	280	220	230	80	445	270	210	350	150	230	385	11	32	51
PRU 354	71	0,37	1400	290	352	40	315	240	264	80	495	295	230	330	170	250	370	11	30	41
PRU 404	80	0,55	1410	290	352	40	315	240	264	80	495	295	210	330	170	250	370	11	33	47
PRU 406	71	0,25	920	324	392	40	355	265	290	80	550	330	245	370	170	250	410	11	37	51
PRU 454	90	1,10	1410	324	392	40	355	265	290	80	550	330	230	370	170	250	410	11	40	61
PRU 456	80	0,37	920																	

CARATTERISTICHE IN MANDATA VENTILATORI SERIE "PRU"

OUTLET CHARACTERISTICS OF "PRU" FANS SERIES

MOTORI A 2/4/6 POLI - 2/4/6 POLES MOTORS

TIPO - TYPE		KW inst.	Poli Poles	dB(A)	HT	Qv m³/h														
VENTILATORE FAN	MOTORE MOTOR					200	300	500	700	900	1200	1500	1800	2100	2500	3000	4000	5000	6000	
PRU 202	63	0,18	2	32		46	46	44	38	26										
PRU 204	63	0,12	4	53		13	11	6												
PRU 222	63	0,25	2	39			60	60	57	55	43									
PRU 224	63	0,12	4	54		17	16	14	10											
PRU 252	71	0,37	2	43				79	77	72	68	60	50							
PRU 254	63	0,12	4	57			20	18	17	12										
PRU 282	80	0,75	2	48				97	97	98	96	93	84	73	60					
PRU 284	63	0,18	4	62				27	25	22	18									
PRU 312	90	1,50	2	50					130	130	130	129	125	113	100	93				
PRU 314	71	0,25	4	64					33	32	29	26	20							
PRU 352	90	2,20	2	44						160	160	165	165	165	155	150	128	100	73	
PRU 354	71	0,37	4	67					16	15	13	12	8							
PRU 404	80	0,55	4	58							55	55	55	50	49	44				
PRU 406	71	0,25	6	46							22	22	20	18	16	13				
PRU 454	90	1,10	4	60									63	62	60	58	54	45	36	
PRU 456	80	0,37	6	48								27	24	22	21	18	16			

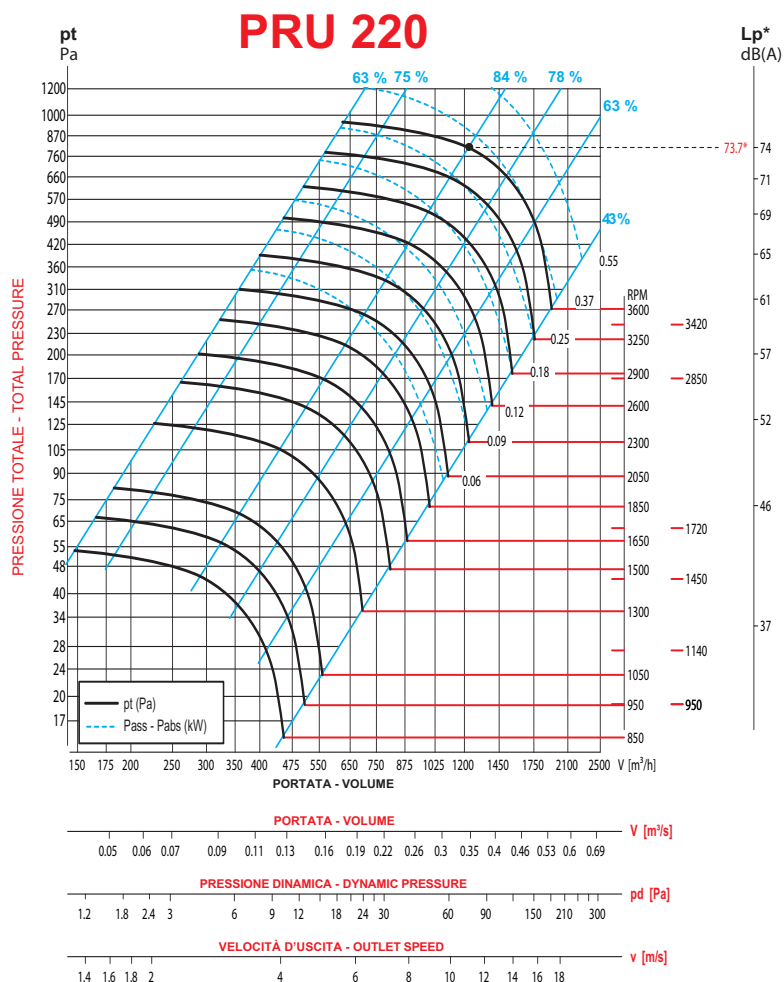
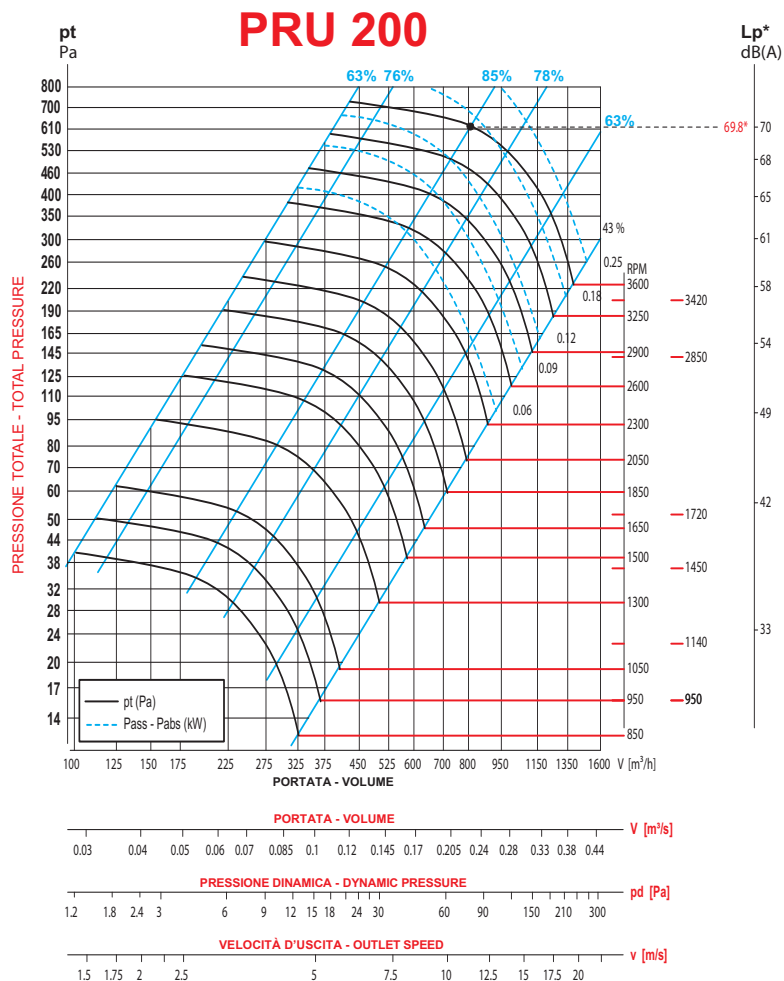
TOLLERANZA SULLA PORTATA ±5% - LOAD TOLERANCE ±5%
 TOLLERANZA SULLA RUMOROSITÀ +3 dB(A) - NOISE TOLERANCE +3 dB(A)

pt mmH2O= da Pa

Valori riferiti a: / Datas referring to: T=15°C; P=1 atm

PRU

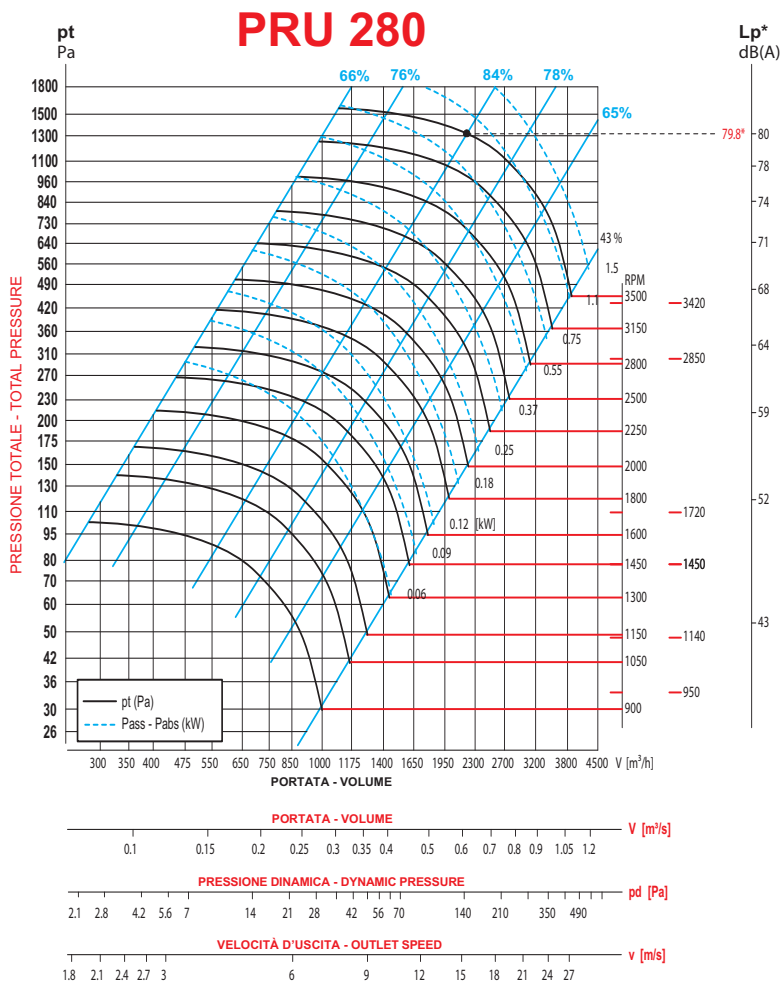
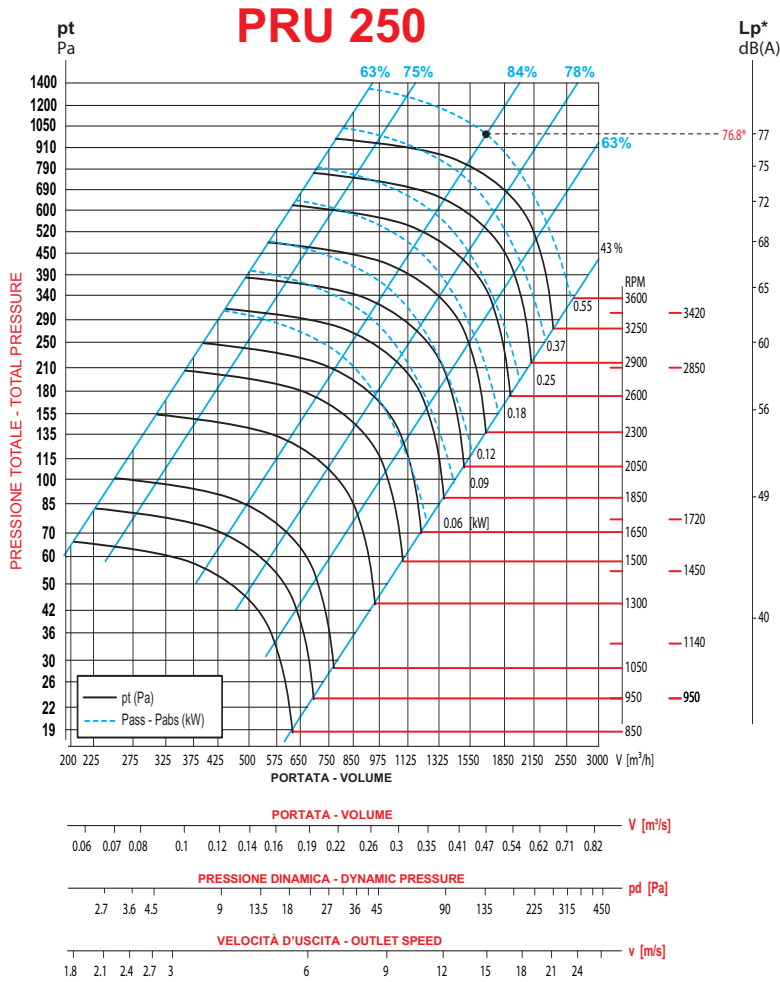
PRESTAZIONI PERFORMANCES



PRU

PRESTAZIONI

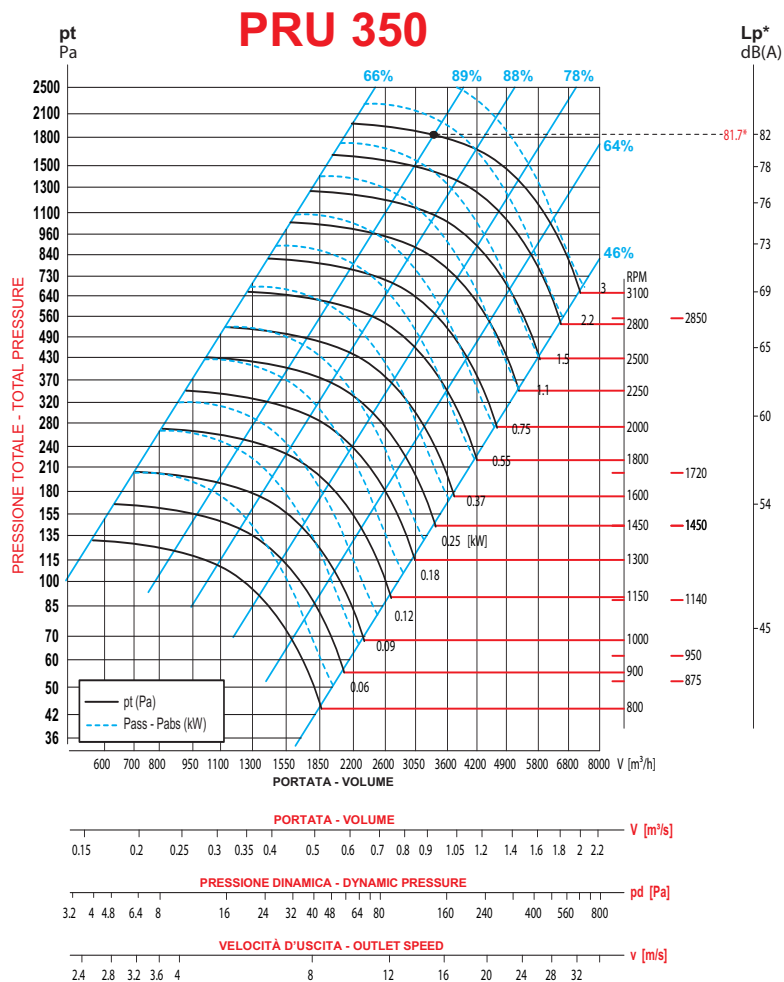
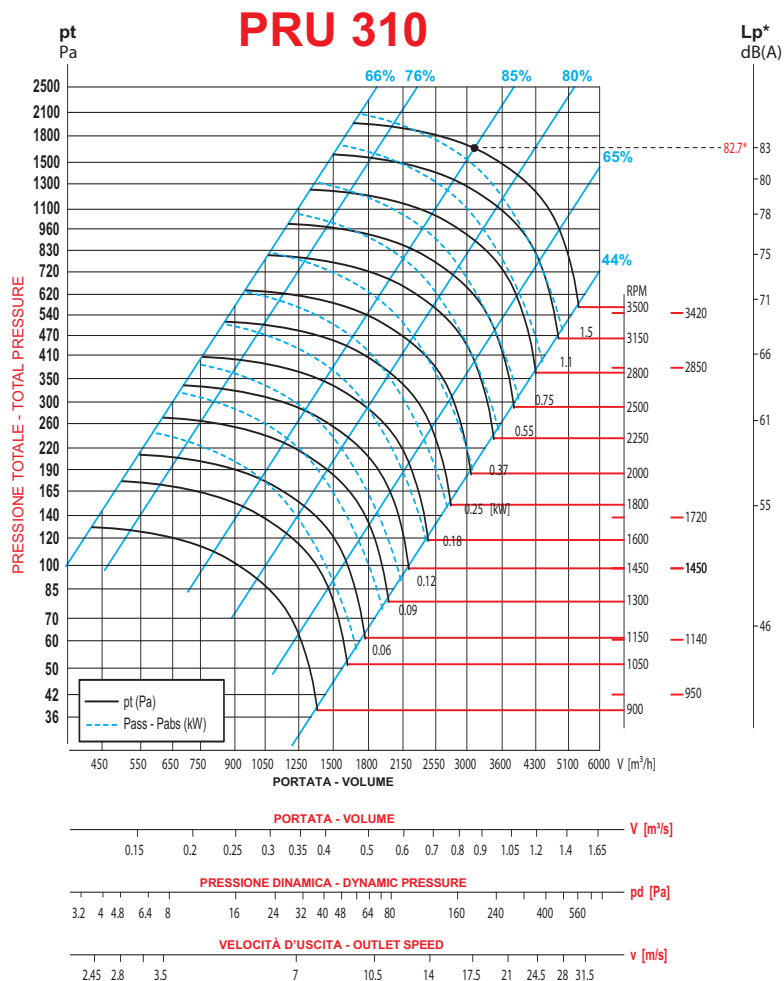
PERFORMANCES



PRU

PRESTAZIONI

PERFORMANCES



PRU

PRESTAZIONI PERFORMANCES

