

Mod. **RM**

$Q = 360 \div 180000 \text{ m}^3/\text{h}$

$Q = 0.1 \div 50 \text{ m}^3/\text{s}$

$p_t = 50 \div 560 \text{ mmH}_2\text{O}$

$p_t = 500 \div 5500 \text{ Pa}$



Campo di lavoro

Portate basse-medie-alte. Pressioni basse-medie.

Tipo di pala

Curva, rovescia (negativa), vedi pag. 2.2.

Applicazioni

Per aspirazione e trasporto di aria anche molto polverosa, segatura, trucioli vari, materiali granulari, ad esclusione di materiali filamentososi.

Esecuzioni costruttive standard

Es.1-Es.4-Es.5-Es.8-Es.9-Es.12, vedi pag. 2.5 - 2.6.

Temperature del fluido standard

-10÷+60°C. Per altre temperature vedi da pag. 1.12 a pag. 1.15.

Tipo di costruzione

Ventilatore in lamiera di Fe360, girante in Fe360 equilibrata staticamente e dinamicamente. Per altri materiali vedi da pag. 1.12 a pag. 1.15.

Dati di funzionamento

Condizioni dell'aria all'aspirazione T=20°C, 0m.s.l.m. e $\rho=1.205 \text{ kg/m}^3$.

Rumorosità

Espressa in potenza sonora L_{wA} [dB(A)] rilevata in campo libero con ventilatore canalizzato, vedi da pag. 1.43 a pag. 1.49.

Orientamenti

N°8 RD (rotazione oraria vista lato trasmissione) e N°8 LG. Ventilatore in versione imbullonata orientabile per le taglie 220-630, orientamento fisso per le taglie 710-2000. Vedi pag. 2.7.

Costruzioni speciali

Vedi da pag. 2.20 a pag. 2.30.

Classi giranti

La seguente tabella fa riferimento a condizioni di lavoro standard. In condizioni di esercizio gravose si consiglia di contattare il servizio clienti di MORO per conoscere la tipologia di girante più idonea.

GRANDEZZA VENTILATORE • Grandeur • Size • Größe • Tamaño	RPM MASSIMO *		
	CLASSE I	CLASSE II	CLASSE III
RM220	5200	6300	
RM250/R	5200	6300	
RM250	5200	6300	
RM280/R	5000	5600	
RM280	5000	5600	
RM310/R	4800	5200	
RM310	4550	5000	
RM350/R	4350	4700	
RM350	4150	4500	
RM400/R	3950	4250	
RM400	3750	4000	
RM450/R	3550	3800	
RM450	3350	3600	
RM500/R	3250	3500	
RM500	3150	3400	
RM560/R	3050	3250	3550
RM560	2950	3150	3300
RM630/R	2600	2950	3200
RM630	2400	2800	3050
RM710/R	2250	2700	2950
RM710	2100	2500	2750
RM800/R	2000	2400	2600
RM800	1900	2200	2400
RM900/R	1750	2100	2300
RM900	1650	2000	2200
RM1000/R	1550	1850	2050
RM1000	1450	1700	1900
RM1120/R	1350	1600	1750
RM1120	1250	1500	1650
RM1250/R	1150	1350	1550
RM1250	1050	1250	1450
RM1400/R	1000	1200	1350
RM1400	950	1150	1300
RM1600	900	1050	1200
RM1800	950	1050	1150
RM2000	850	950	1050

FRA	60°C	E	100°C	DECLASSARE VELOCITÀ	4%
	• entre		100°C		• et
• between	150°C	• and	200°C	• degrade speed	16%
• zwischen	200°C	• und	250°C	• Geschwindigkeit herabsetzen	23%
• entre	250°C	• y	300°C	• rebajar velocidad	30%
	300°C		350°C		37%
	350°C		400°C		45%
	400°C		450°C		54%
	450°C		500°C		64%

* VALORI VALIDI FINO A 60°C

• Valeurs valables jusqu'à 60°C • Values valid up to 60°C
• Werte bis 60°C gültig • Valores válidos hasta 60°C

Domaine de travail

Débits petits-moyens-élevés. Basses-moyennes pressions.

Type d'ailette

Courbée, inversée (négative), voir page 2.2.

Applications

Pour aspiration et transport d'air très poussiéreux, de sciure, de divers copeaux, de matières en granulés, sauf matières filamenteuses.

Configurations de constructions standard

Ex.1- Ex.4- Ex.5- Ex.8- Ex.9- Ex.12, voir pages 2.5 - 2.6.

Températures du fluide standard

-10÷+60°C. Pour d'autres températures voir pages 1.12-1.15.

Type de fabrication

Ventilateur en tôle de Fe360, turbine en Fe360 équilibrée statiquement et dynamiquement. Pour d'autres matériaux, voir pages 1.12-1.15.

Données de fonctionnement

Conditions de l'air à l'aspiration T=20°C, 0 m asl et $\rho=1.205 \text{ kg/m}^3$.

Niveau sonore

Exprimé en puissance sonore L_{wA} [dB(A)], relevé à l'air libre avec un ventilateur canalisé, voir pages 1.43 - 1.49.

Orientations

8 RD (rotation dans le sens des aiguilles d'une montre côté transmission) et 8 LG. Ventilateur en version boulonnée orientable pour les tailles 220-630, orientation fixe pour les tailles 710-2000. Voir page 2.7.

Fabrications spéciales

Voir pages 2.20-2.30.

Classes de turbines

Le tableau ci-dessus fait référence aux conditions de travail normales, en conditions de travail pénibles, on préconise de contacter le service clientèle de MORO pour connaître le type de turbine le plus adapté.

Field of operation

Low-medium-high flow rates. Medium-low pressures.

Blade type

Curve, backward (negative), see pg. 2.2.

Applications

For the inlet and transport of potentially very dusty air, sawdust, various chips, granular materials, with the exclusion of filaments.

Standard constructional arrangements

Arr.1-Arr.4-Arr.5-Arr.8-Arr.9-Arr.12, see pgs. 2.5 - 2.6.

Standard fluid temperatures

-10÷+60°C. For other temperatures see pgs. 1.12 to 1.15.

Type of construction

Fan in Fe360 plate, impeller in Fe360 statically and dynamically balanced. For other materials see pgs. 1.12 to 1.15.

Operating specifications

Condition of inlet air T=20°C, 0 m above sea level and $\rho=1.205 \text{ kg/m}^3$.

Noise level

Expressed as sound power L_{wA} [dB(A)] measured in free field with ducted fan, see pgs. 1.43 to 1.49.

Orientations

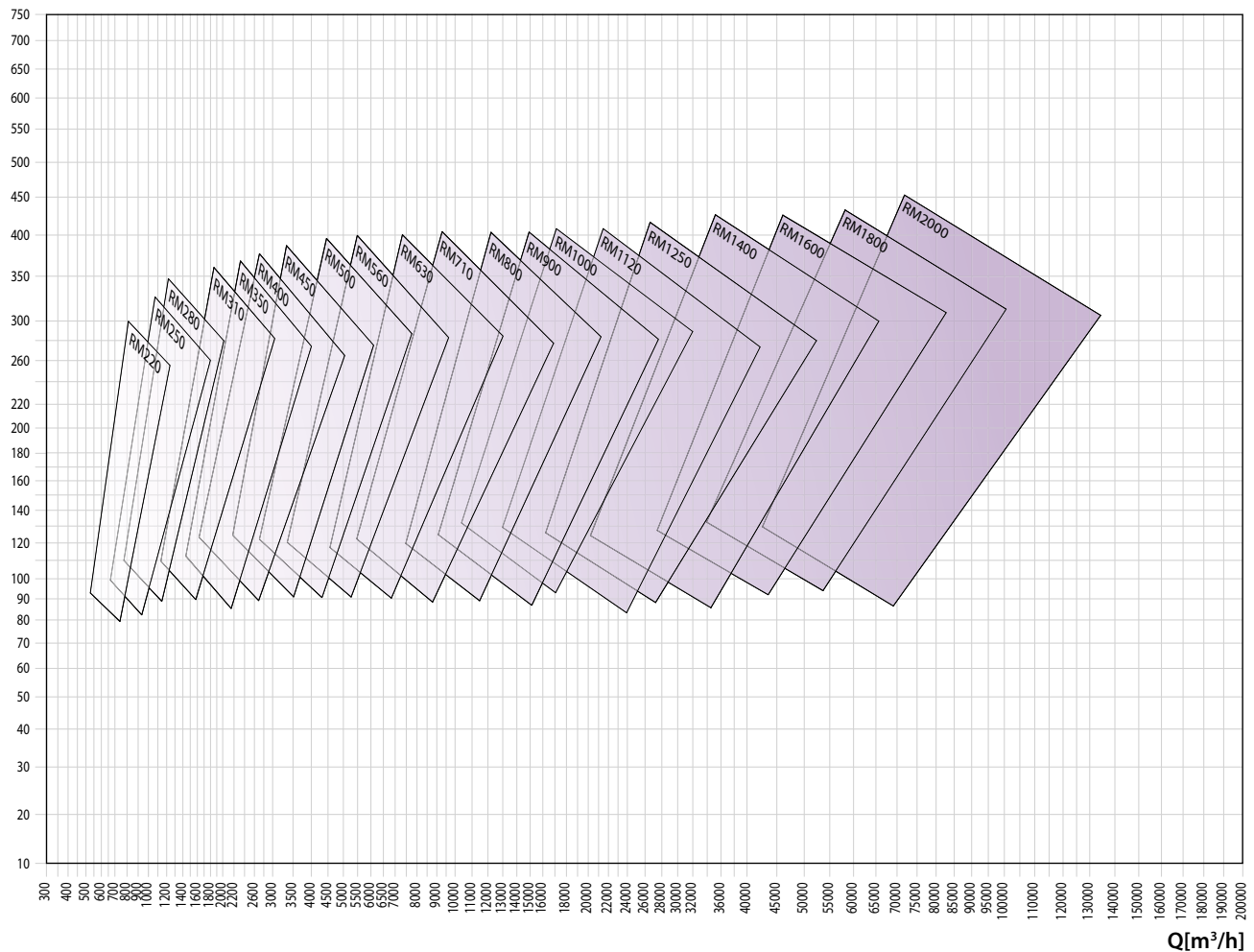
No.8 RD (clockwise viewed from transmission side) and No.8 LG. Fan in bolted orientable version for sizes 220-630, fixed orientation for sizes 710-2000. See pg. 2.7.

Special applications

See pgs. 2.20 to 2.30.

Impeller classes

The above table refers to standard operating conditions, in heavy-duty service conditions it is advisable to contact the MORO Customer Service to establish the most suitable type of impeller.

pt [mmH₂O]

■ Arbeitsbereich

Niedrige - mittlere - grosse Fördermengen. Mittlere - niedrige Drücke.

Schaufelform

Kurve, rückwärts gekrümmt (negativ), siehe Seite 2.2.

Anwendungen

Zur Absaugung und zum Transport von stark staubhaltiger Luft, vermisch mit Sägestaub, Spänen verschiedener Art, Granulaten, ausser fadenförmigen Materialien.

Konstruktive Standardausführungen

Ausf. 1-Ausf. 4-Ausf. 5-Ausf. 8-Ausf. 9-Ausf. 12, siehe Seiten 2.5 - 2.6.

Standardtemperatur des Mediums

-10 ÷ +60°C. Für andere Temperaturen siehe Seiten 1.12 bis 1.15.

Konstruktionsart

Ventilator aus Blech Fe360, Laufrad aus Fe360, statisch und dynamisch ausgewuchtet. Für andere Materialien siehe Seiten 1.12 bis 1.15.

Betriebsdaten

Physikalischer Zustand der Ansaugluft T=20°C, 0 m ü. M. und ρ=1.205 kg/m³.

Geräuschpegel

angegeben als Schalleistungspegel L_{wA} [dB(A)] mit Messung im Freifeld und an Rohren angeschlossenen Ventilatoren, siehe Seiten 1.43 bis 1.49.

Ausrichtung

8 Modelle RD (Drehrichtung im Uhrzeigersinn, von Antriebsseite aus gesehen) und 8 Modelle LG. Angeschraubter, in der Ausrichtung veränderbarer Ventilator in den Grössen 220 - 630, mit Vorderstütze und damit nicht veränderbar ab Grösse 710 mit Riementrieb, immer ausrichtbar bei allen direkt angetriebenen Ventilatoren ohne Vorderstütze, siehe Seite 2.7.

Spezialausführungen

Siehe Seiten 2.20 bis 2.30.

Laufradklassen

Die obenstehende Tabelle bezieht sich auf normale Betriebsbedingungen. Bei erschwerenden Betriebsbedingungen wird empfohlen, den Kundenservice der MORO zu kontaktieren, um den am besten geeigneten Laufradtyp zu bestimmen.

■ Campo de trabajo

Caudales pequeños-medios-altos. Presiones medias-bajas.

Tipo de pala

Curva, invertida (negativa), ver pág. 2.2.

Aplicaciones

Para aspiración y transporte de aire incluso muy cargado de polvo, serrín, virutas de distintos tipos y materiales granulados, exceptuando los materiales filamentosos.

Variantes constructivas estándares

Ejec.1-Ejec.4-Ejec.5-Ejec.8-Ejec.9-Ejec.12, ver págs. 2.5 - 2.6.

Temperaturas del fluido estándares

De -10 a +60°C. Para otras temperaturas, ver págs. de 1.12 a 1.15.

Tipo de construcción

Ventilador de chapa en Fe360, rotor en Fe360 equilibrado estática y dinámicamente. Para otros materiales, ver págs. de 1.12 a 1.15.

Datos de funcionamiento

Condiciones del aire en aspiración T=20°C, 0 m SNM y ρ=1.205 kg/m³.

Niveles de ruido

Expresados en potencia sonora L_{wA} [dB(A)] medida en campo abierto con ventilador canalizado, ver págs. de 1.43 a 1.49.

Orientaciones

8 RD (rotación dextrógira vista desde el lado de transmisión) y 8 LG. Ventilador en versión empernada orientable para tamaños 220-630, orientación fija para tamaños 710-2000. Ver pág. 2.7.

Construcciones especiales

Ver págs. de 2.20 a 2.30.

Clases de rotores

La tabla arriba hace referencia a condiciones de trabajo estándares, en condiciones de funcionamiento pesadas, se aconseja llamar al Servicio de atención al cliente de MORO para conocer el tipo de rotor más adecuado.

Tipo • Type • Type • Typ • Tipo		P inst. [kW]	n	LpA [dB(A)]	Tolleranza sulla portata ±5% • Tolérance sur le débit ±5% • Load tolerance ±5% • Durchsatztoleranz ±5% • Tolerancia respecto caudal ±5%																						
Ventilatore • Ventilateur • Fan • Ventilator • Ventilador	Motore • Moteur • Motor • Motor • Motor				Q [m³/h]																						
					360	400	430	470	540	650	720	790	865	935	1080	1225	1370	1440	1620	1800	2160	2520	2880	3240	3600		
					pt[mmH ₂ O]																						
RM220/2	63	0,18	2820	54	71	70	69	67	64	57	52	45															
RM250/2R	63	0,25	2820	57			85	84	83	79	76	71	66	61	48												
RM250/2	71	0,37	2820	59				98	96	93	91	88	85	82	72	60	44										
RM280/2R	71	0,55	2850	61					110	109	108	106	104	102	96	88	77	72	53								
RM280/2	80	0,75	2850	61						123	122	121	120	118	114	109	102	98	86	70							
RM310/2R	80	1,1	2920	65									156	154	151	148	144	141	135	127	106	74					
RM310/2	90	1,5	2920	65										166	163	159	156	154	149	143	126	101					
RM350/2R	90	1,5	2920	63											190	190	190	189	187	180							
RM350/2	90	2,2	2920	68													207	207	207	203	195	183	168	148			
RM400/2R	100	3	2940	70																277	274	266	255	241	223		
RM400/2	112	4	2940	71																	292	290	284	275	263	248	
RM450/2R	132	5,5	2940	74																				339	337	332	
RM450/2	132	7,5	2940	73																					356	353	
RM500/2R	160	11	2950	77																							
RM500/2	160	15	2950	77																							
RM560/2R	160	18,5	2960	81																							
RM560/2	180	22	2960	81																							
RM500/4R	90	1,1	1420	62															89	88	87	83	78	72			
RM500/4	90	1,5	1420	64																95	94	93	90	85			
RM560/4R	100	2,2	1420	66																			113	112	110		
RM560/4	100	3	1420	67																			121	121	120		
RM630/4R	112	4	1440	69																						143	
RM630/4	132	5,5	1460	70																							
RM710/4R	132	7,5	1460	72																							
RM710/4	160	11	1460	74																							
RM800/4R	160	15	1460	75																							
RM800/4	180	18,5	1460	76																							
RM900/4R	200	30	1465	78																							
RM900/4	225	37	1470	78																							
RM1000/4R	225	45	1470	80																							
RM1000/4	250	55	1485	82																							
RM1120/4R	280	75	1490	83																							
RM1120/4	280	90	1490	84																							
RM800/6R	132	4	955	66																							
RM800/6	132	5,5	960	68																							
RM900/6R	160	7,5	970	70																							
RM900/6	160	11	970	71																							
RM1000/6R	180	15	980	73																							
RM1000/6	200	18,5	985	73																							
RM1120/6R	200	22	985	74																							
RM1120/6	225	30	985	76																							
RM1250/6R	250	37	990	78																							
RM1250/6	280	45	990	78																							
RM1400/6R	280	55	990	80																							
RM1400/6	315	75	995	81																							

RM

Il livello di pressione sonora ponderato A, LpA (cap.14), corrisponde al valore rilevato, nelle condizioni di prova, nel punto di massima rumorosità.



Tolleranza sulla rumorosità ±4dB(A)																											
• Tolérance sur le bruit ±4dB(A) • Noise tolerance ±4dB(A)																											
• Geräushtoleranz ±4dB(A) • Tolerancia respecto a ruido ±4dB(A)																											
Q [m³/h]																											
3960	4320	4680	5400	6120	7200	7920	9000	10080	10800	12600	14400	16200	18000	19800	21600	25200	28800	32400	36000	39600	43200	46800	54000	61200	68400	76500	86400
pt[mmH₂O]																											
124																											
204	183	160	112																								
232	212	191	146	98																							
325	315	303	274	238	176	129																					
347	338	328	302	270	210	168																					
380	380	378	369	353	320	292	242	187	147																		
	412	412	408	399	375	353	313	266	231																		
			486	488	483	473	452	422	399	329	247	157															
				523	524	520	507	485	467	410	340	259															
64	55	47																									
80	73	65	48																								
108	104	99	89	75	52																						
119	116	113	104	91	73	56																					
143	142	140	135	128	113	101	81	60																			
	163	163	160	155	145	135	119	101	87																		
			187	187	182	176	165	151	140	110	78																
				210	210	208	202	192	185	162	134	104	74														
					251	250	247	243	230	212	190	165	138	110													
						271	270	268	260	246	228	208	184	158	103												
								329	329	325	316	305	290	273	231	184	134										
									354	354	349	341	330	316	261	239	193										
											404	402	398	390	369	340	304	264	220	175							
												448	450	449	445	431	410	381	348	310	269	226					
													511	512	509	498	480	457	429	396	360	281	198				
														571	570	561	540	530	507	480	416	347	265				
		107	108	107	104	101	92	84	77	62	43																
			117	117	116	114	108	103	98	85	65	48															
				145	145	144	142	139	130	117	103	90	76	61													
					156	156	153	151	147	133	125	110	98	80													
						180	180	178	173	167	157	143	136	107	76												
							196	197	195	191	185	176	168	146	117	89											
									224	223	220	215	211	193	170	148	115	95									
										250	250	248	245	235	220	201	178	155	129	103							
											287	286	282	274	261	246	228	207	185	138							
												315	315	311	304	293	280	264	246	205	160						
															351	349	344	335	325	312	280	242	200	151			
																399	399	396	390	383	361	314	301	259	203		

■ Le niveau de pression sonore pondérée A, LpA (chap. 14), correspond à la valeur relevée dans les conditions d'essai au point de niveau sonore maximum.

■ Der nach A bewertete Schalldruckpegel LpA (Kap. 14) entspricht in den Testbedingungen dem höchsten gemessenen Wert des Geräuschpegels.

■ The A-weighted sound power level, LpA (Chap.14), is the value measured in test conditions at the point of maximum noise level.

■ El nivel de presión sonora ponderado A, LpA (cap. 14), corresponde al valor medido, en las condiciones de prueba, en el punto con máximos niveles de ruido.

Tipo • Type • Type • Typ • Tipo		P inst. [kW]	n	LpA [dB(A)]	Tolleranza sulla portata ±5% • Tolérance sur le débit ±5% • Load tolerance ±5% • Durchsatztoleranz ±5% • Tolerancia respecto caudal ±5%																					
Ventilatore • Ventilateur • Fan • Ventilator • Ventilador	Motore • Moteur • Motor • Motor • Motor				Q [m³/h]																					
					360	400	430	470	540	650	720	790	865	935	1080	1225	1370	1440	1620	1800	2160	2520	2880	3240	3600	
					pt[mmH ₂ O]																					
RM220/2	63	0,18	2820	54	70	69	68	66	63	56	51	44														
RM250/2R	63	0,25	2820	57			85	84	83	79	76	72	67	62	50											
RM250/2	71	0,37	2820	59				97	96	93	91	88	86	83	73	62	47									
RM280/2R	71	0,55	2850	61					109	108	108	106	104	102	97	89	79	74	56							
RM280/2	80	0,75	2850	61						122	121	120	120	118	114	110	103	100	88	73						
RM310/2R	80	1,1	2920	65									154	152	150	147	144	141	135	128	109	79				
RM310/2	90	1,5	2920	65										164	161	158	155	153	149	144	128	105				
RM350/2R	90	1,5	2920	63											187	188	188	187	185	179						
RM350/2	90	2,2	2920	68													204	204	205	202	195	184	169	152		
RM400/2R	100	3	2940	70																271	269	262	252	239	223	
RM400/2	112	4	2940	71																	285	284	279	271	260	247
RM450/2R	132	5,5	2940	74																				330	329	324
RM450/2	132	7,5	2940	73																					346	344
RM500/2R	160	11	2950	77																						
RM500/2	160	15	2950	77																						
RM560/2R	160	18,5	2960	81																						
RM560/2	180	22	2960	81																						
RM500/4R	90	1,1	1420	62																89	88	87	83	79	73	
RM500/4	90	1,5	1420	64																	95	94	93	90	86	
RM560/4R	100	2,2	1420	66																				112	112	110
RM560/4	100	3	1420	67																				120	120	120
RM630/4R	112	4	1440	69																						142
RM630/4	132	5,5	1460	70																						
RM710/4R	132	7,5	1460	72																						
RM710/4	160	11	1460	74																						
RM800/4R	160	15	1460	75																						
RM800/4	180	18,5	1460	76																						
RM900/4R	200	30	1465	78																						
RM900/4	225	37	1470	78																						
RM1000/4R	225	45	1470	80																						
RM1000/4	250	55	1485	82																						
RM1120/4R	280	75	1490	83																						
RM1120/4	280	90	1490	84																						
RM800/6R	132	4	955	66																						
RM800/6	132	5,5	960	68																						
RM900/6R	160	7,5	970	70																						
RM900/6	160	11	970	71																						
RM1000/6R	180	15	980	73																						
RM1000/6	200	18,5	985	73																						
RM1120/6R	200	22	985	74																						
RM1120/6	225	30	985	76																						
RM1250/6R	250	37	990	78																						
RM1250/6	280	45	990	78																						
RM1400/6R	280	55	990	80																						
RM1400/6	315	75	995	81																						

RM

Il livello di pressione sonora ponderato A, LpA (cap.14), corrisponde al valore rilevato, nelle condizioni di prova, nel punto di massima rumorosità.

Tolleranza sulla rumorosità ±4dB(A)

- Tolérance sur le bruit ±4dB(A)
- Noise tolerance ±4dB(A)
- Geräushtoleranz ±4dB(A)
- Tolerancia respecto a ruido ±4dB(A)

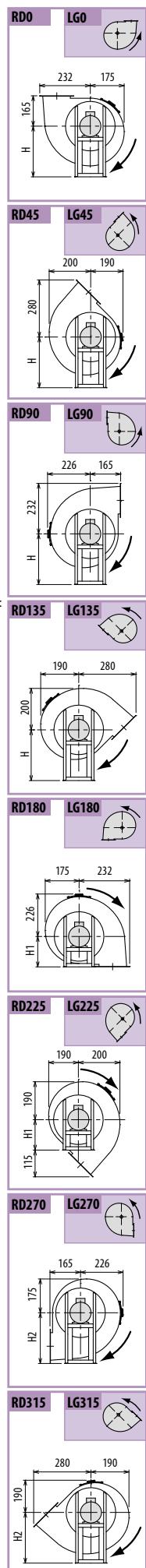
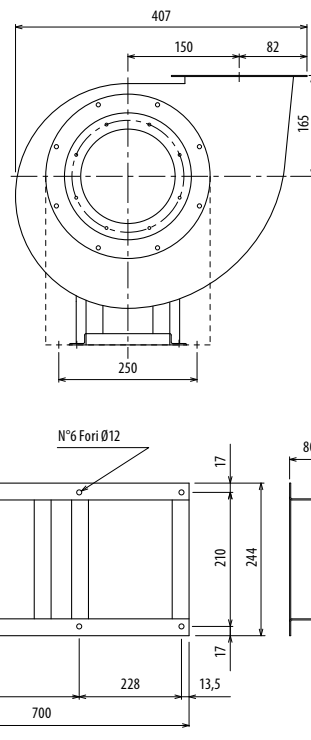
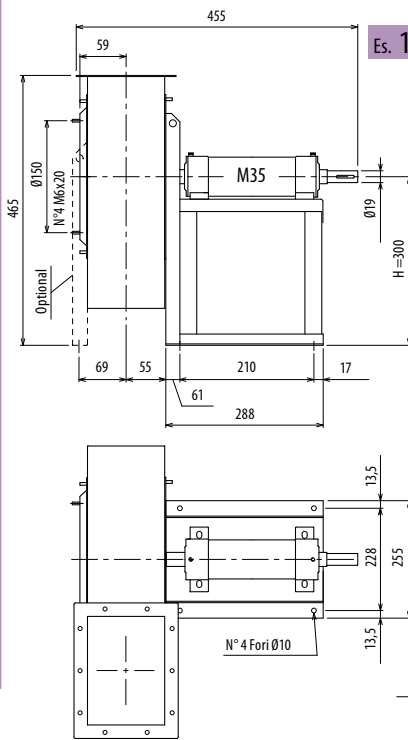
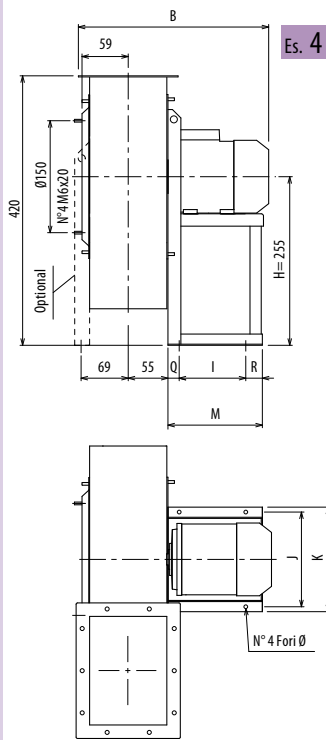
Q [m³/h]																											
3960	4320	4680	5400	6120	7200	7920	9000	10080	10800	12600	14400	16200	18000	19800	21600	25200	28800	32400	36000	39600	43200	46800	54000	61200	68400	76500	86400
pt[mmH₂O]																											
130																											
205	186	165	120																								
232	214	195	153	109																							
318	310	299	273	240	183	140																					
339	331	323	300	271	216	178																					
369	369	368	360	346	317	292	247	196	159																		
	399	399	396	389	369	350	314	272	240																		
			467	469	466	458	440	414	394	331	257	173															
				501	503	500	490	472	456	407	345	272															
65	57	49																									
81	75	67	51																								
108	104	100	90	77	55																						
119	116	113	105	93	76	60																					
142	141	139	134	128	114	103	84	64																			
	161	161	159	154	145	136	121	104	91																		
			185	185	181	175	165	152	142	114	84																
				207	208	206	201	192	185	165	139	111	83														
					246	246	243	240	228	212	192	169	144	118													
						266	265	264	257	245	229	211	189	165	115												
								320	321	318	310	301	287	272	234	191	145										
									344	345	341	335	325	313	263	244	203										
											391	390	387	380	362	336	304	268	227	186							
												432	434	434	431	419	401	376	347	313	277	238					
													489	490	488	479	464	444	420	391	359	287	211				
															545	545	538	520	512	493	470	414	354	280			
		106	107	107	104	101	93	85	79	65	47																
			116	116	116	114	109	104	99	87	69	53															
				144	144	143	141	139	130	118	105	93	80	66													
					154	155	152	150	147	134	127	113	102	85													
						178	178	176	172	166	157	144	138	110	81												
							193	195	193	190	184	176	169	149	122	96											
									220	219	217	212	209	192	171	150	119	101									
										245	246	244	241	233	219	202	181	160	135	111							
											280	280	276	269	258	244	227	208	188	144							
												307	308	304	298	289	277	263	246	209	167						
															341	340	336	328	319	307	279	244	205	160			
																386	387	385	380	374	355	312	302	264	213		

■ Le niveau de pression sonore pondérée A, LpA (chap. 14), correspond à la valeur relevée dans les conditions d'essai au point de niveau sonore maximum.

■ Der nach A bewertete Schalldruckpegel LpA (Kap. 14) entspricht in den Testbedingungen dem höchsten gemessenen Wert des Geräuschpegels.

■ The A-weighted sound power level, LpA (Chap.14), is the value measured in test conditions at the point of maximum noise level.

■ El nivel de presión sonora ponderado A, LpA (cap. 14), corresponde al valor medido, en las condiciones de prueba, en el punto con máximos niveles de ruido.

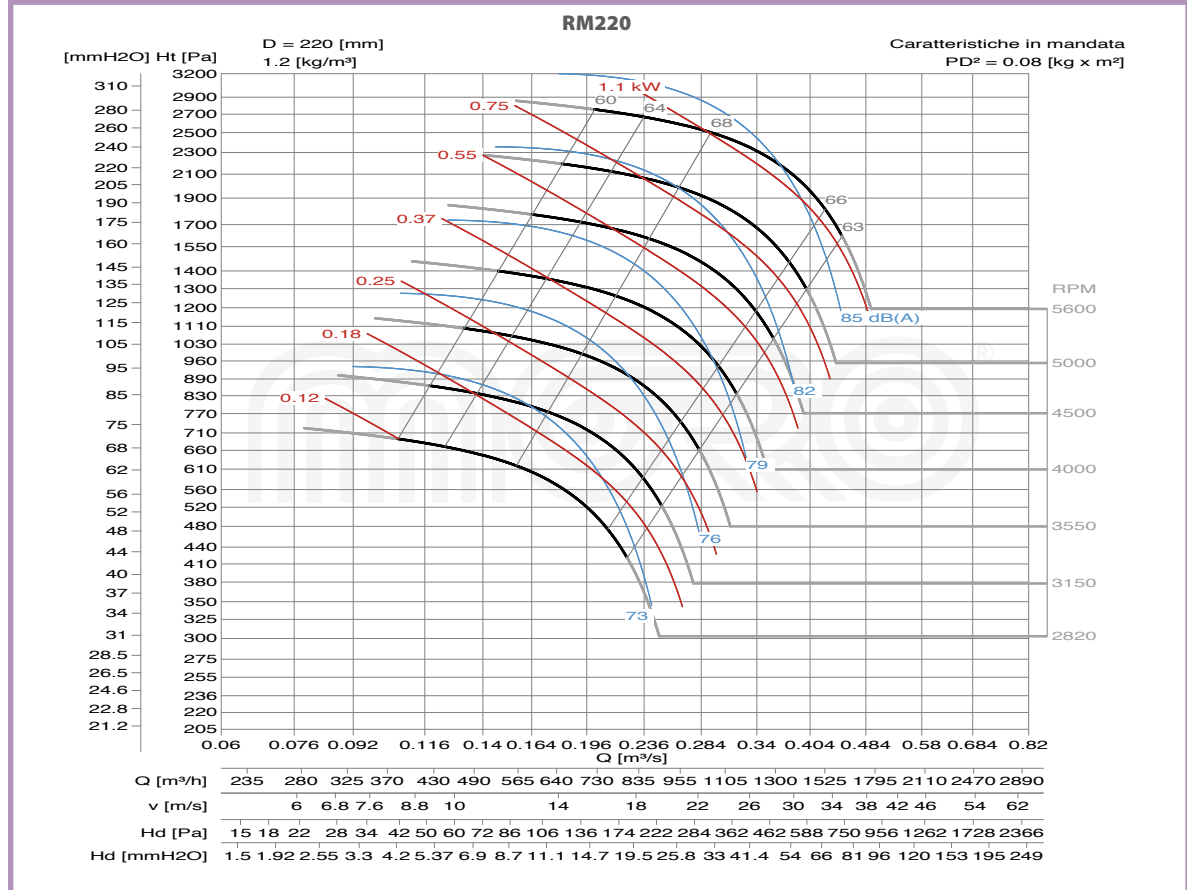
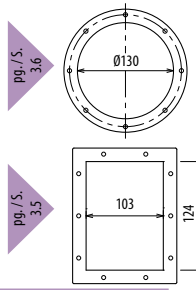


Il ventilatore è orientabile - Peso in tabella comprensivo di motore

- Le ventilateur est orientable
 - The fan is revolvable
 - Der Ventilator ist drehbar
 - El ventilador es orientable
- Le poids dans le tableau inclut le moteur The weight indicated in the table includes motor Gewichtsangabe in Tabelle inkl. Motor El peso en la tabla incluye el motor

Ulteriori informazioni e quote:
 ■ Further information and sizes:
 ■ Weitere Infos und Größen:
 ■ Más informaciones y medidas:

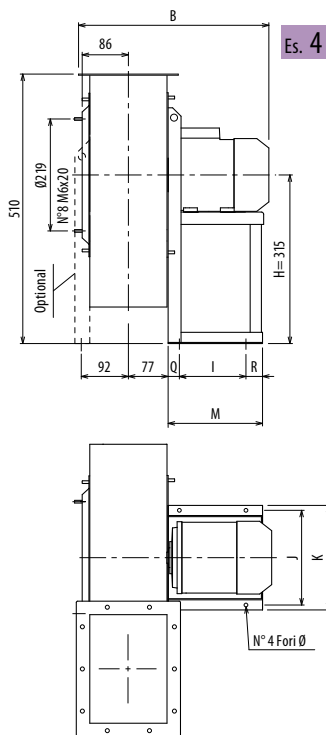
TIPO - Type		PESO Weight	PD ²	B	I	H	H1	H2	J	K	M	Q	R	Ø
VENTILATORE Fan	MOTORE Motor	Kg	Kgf x m ²											
RM220/2	63 A2	18	0,08	307	86	255	165	255	184	206	150	48	16	10
RM220/T		20	0,08			300	180	300						



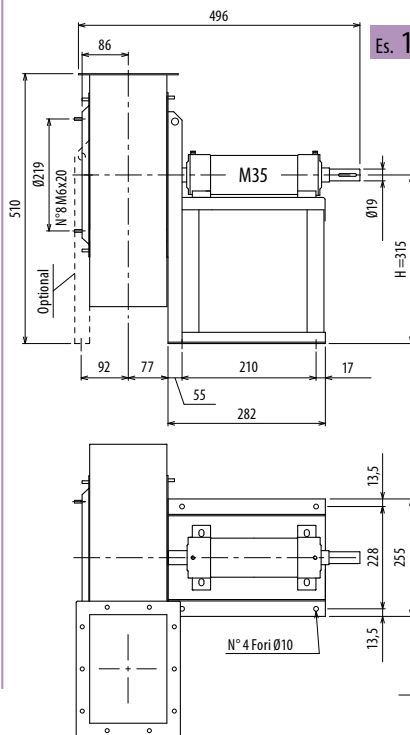
DIMENSIONI D'INGOMBRO E PESI/CURVE DI FUNZIONAMENTO

■ DIMENSIONS D'ENCOMBREMENT ET POIDS/COURBES DE FONCTIONNEMENT ■ OVERALL DIMENSIONS AND WEIGHT/WORKING CURVES
 ■ AUSMAßE UND GEWICHTE/FUNKTIONSKURVEN ■ DIMENSIONES QUE OCUPA Y PESOS/CURVAS DE FUNCIONAMIENTO

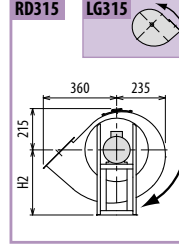
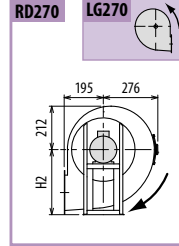
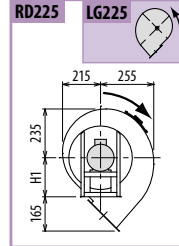
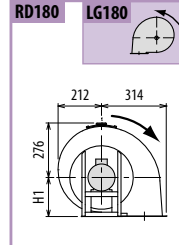
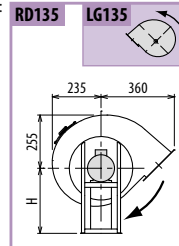
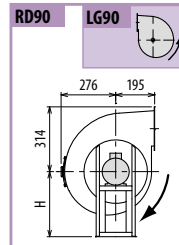
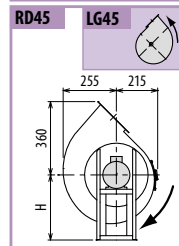
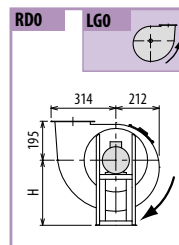
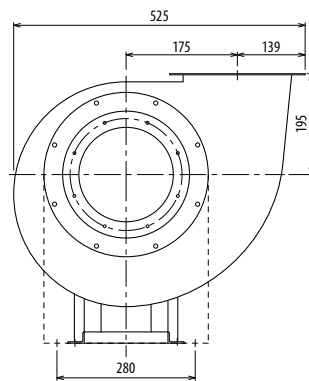
RM250



Es. 4



Es. 1

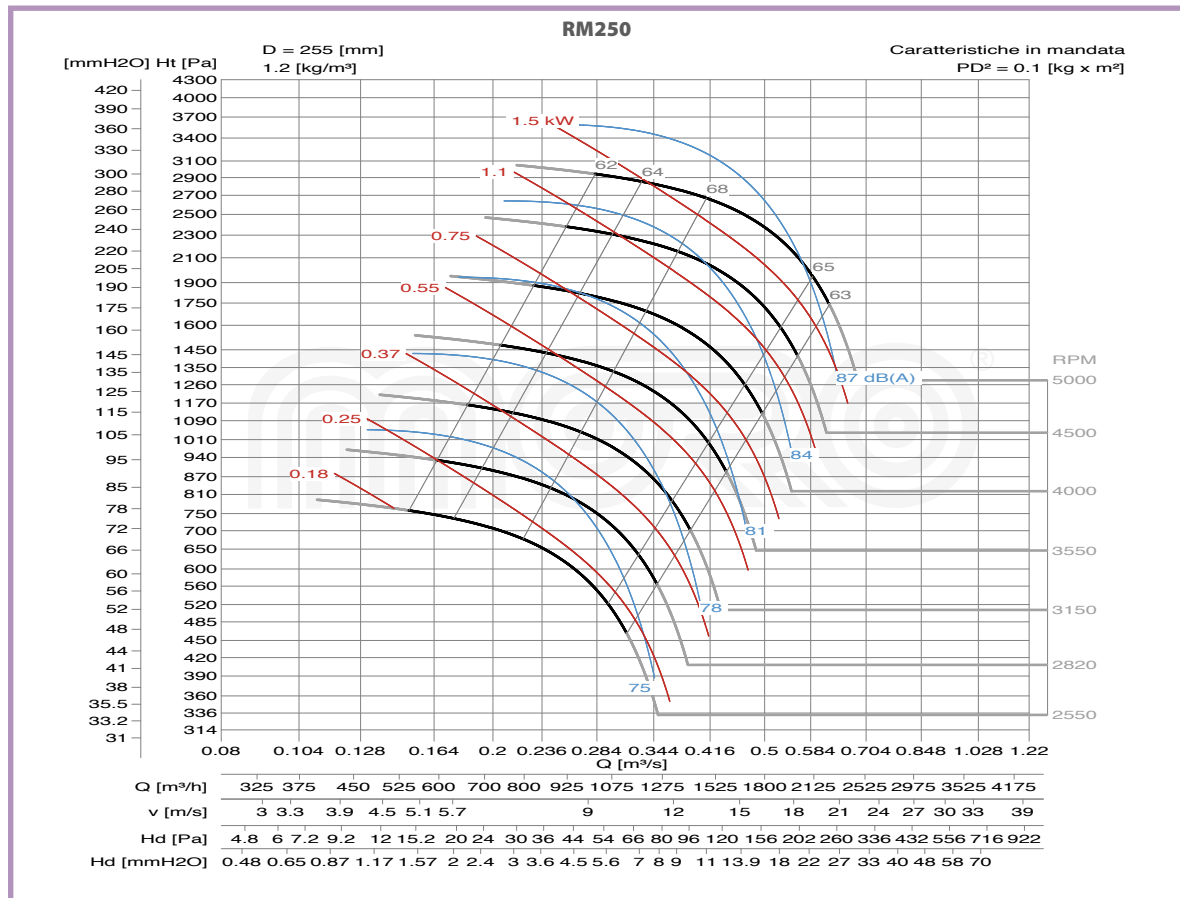
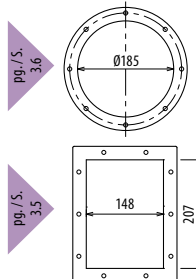


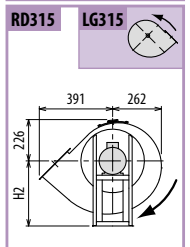
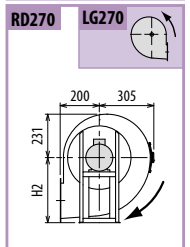
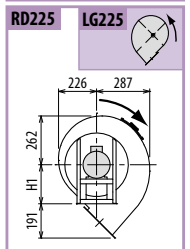
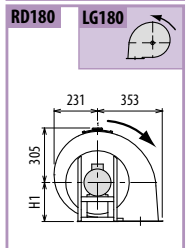
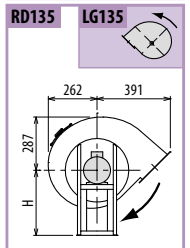
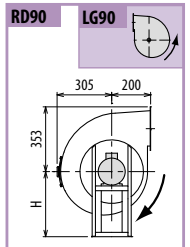
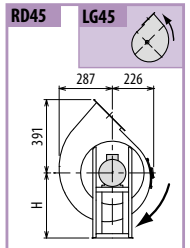
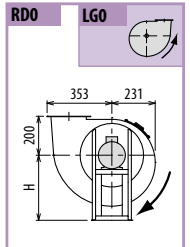
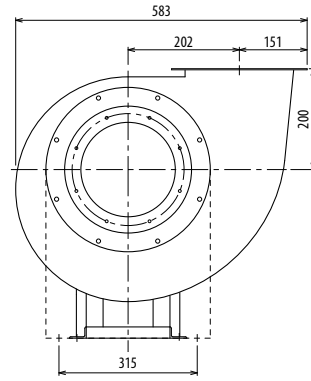
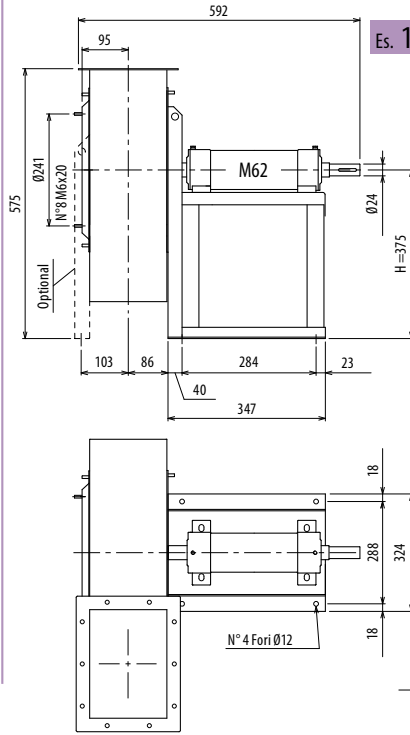
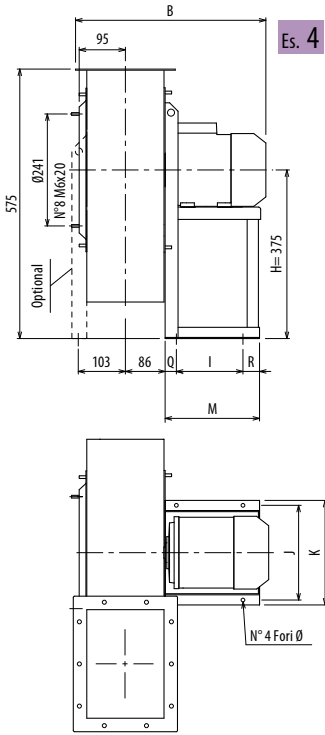
Il ventilatore è orientabile - Peso in tabella comprensivo di motore

- Le ventilateur est orientable
 - The fan is revolvable
 - Der Ventilator ist drehbar
 - El ventilador es orientable
- Le poids dans le tableau inclut le moteur The weight indicated in the table includes motor Gewichtsangabe in Tabelle inkl. Motor El peso en la tabla incluye el motor

Ulteriori informazioni e quote:
 ■ Ulérieures informations et cotes:
 ■ Further information and sizes:
 ■ Weitere Infos und Größen:
 ■ Más informaciones y medidas:

TIPO - Type		PESO Weight	PD ²	B	I	H	H1	H2	J	K	M	Q	R	Ø
VENTILATORE Fan	MOTORE Motor	Kg	Kgf x m ²											
RM250/2R	63 B2	24	0,09	366	86	315	195	315	184	206	150	48	16	10
RM250/2	71 A2	26	0,10	396	121	315	195	315	203	225	195	48	26	10
RM250/T		25	0,10			315	195	315						



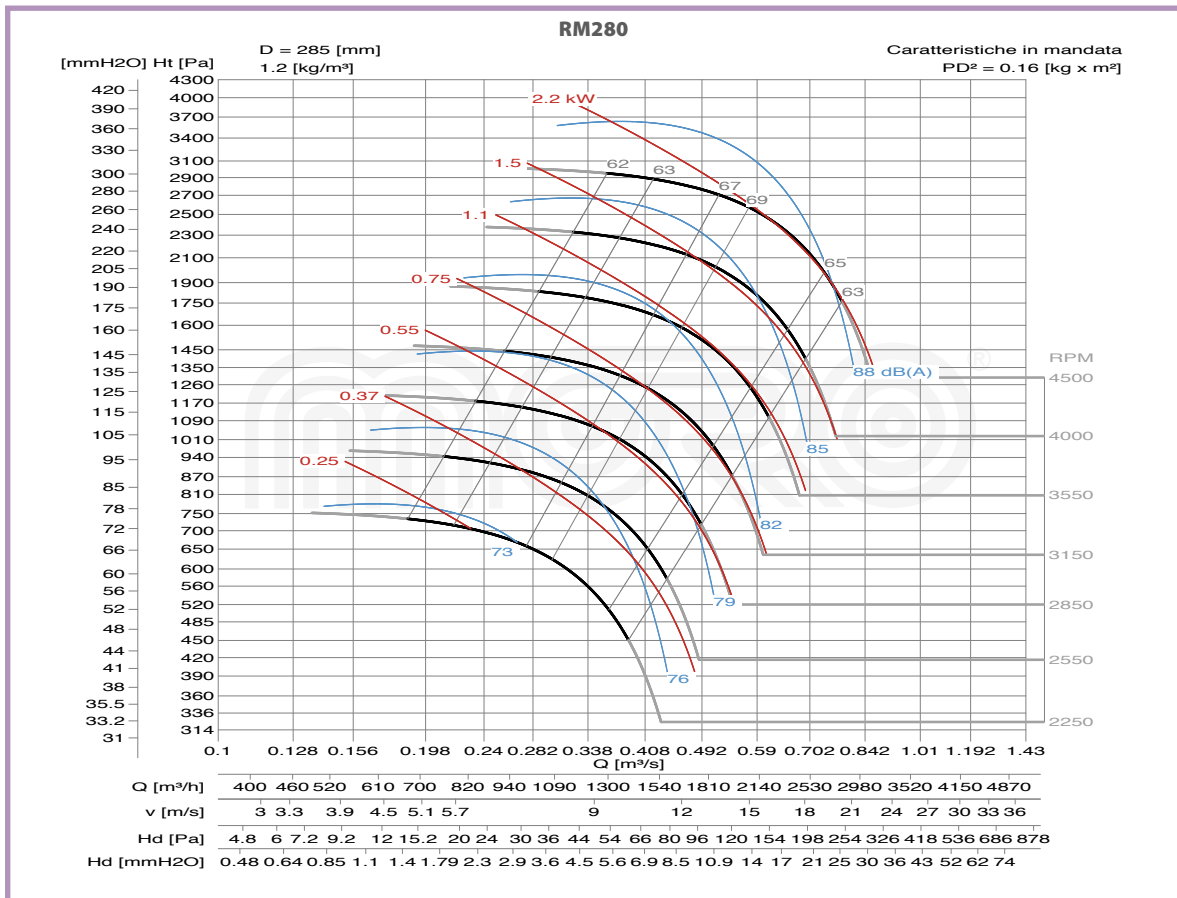
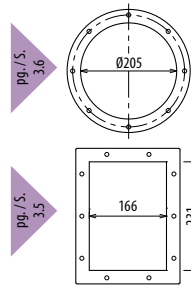


Il ventilatore è orientabile - Peso in tabella comprensivo di motore

- Le ventilateur est orientable
 - The fan is revolvable
 - Der Ventilator ist drehbar
 - El ventilador es orientable
- Le poids dans le tableau inclut le moteur The weight indicated in the table includes motor Gewichtsangabe in Tabelle inkl. Motor El peso en la tabla incluye el motor

Ulteriori informazioni e quote:
 ■ Further information and sizes:
 ■ Weitere Infos und Größen:
 ■ Más informaciones y medidas:

TIPO - Type		PESO Weight	PD ²											
VENTILATORE Fan	MOTORE Motor	Kg	Kgf x m ²	B	I	H	H1	H2	J	K	M	Q	R	Ø
RM280/2R	71 B2	30	0,15	414	121	375	200	375	203	225	196	49	26	10
RM280/2	80 A2	35	0,16	438	121	375	200	375	203	225	217	48	48	10
RM280/T		40	0,16			375	200	375						

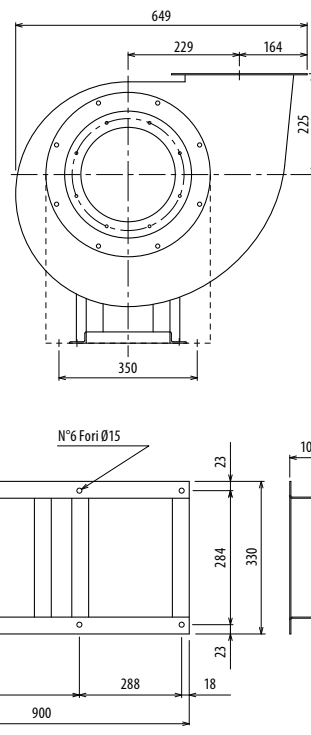
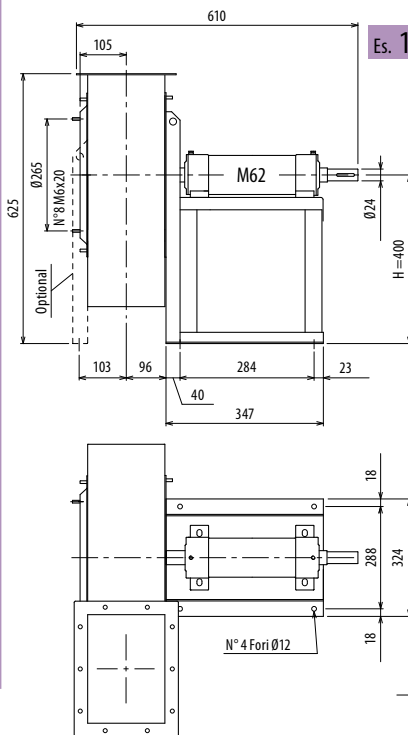
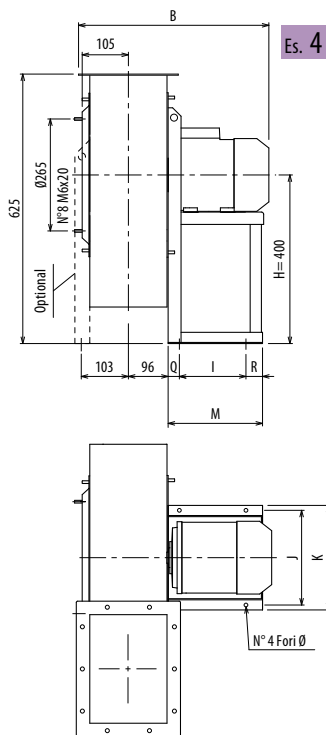


RM

DIMENSIONI D'INGOMBRO E PESI/CURVE DI FUNZIONAMENTO

■ DIMENSIONS D'ENCOMBREMENT ET POIDS/COURBES DE FONCTIONNEMENT ■ OVERALL DIMENSIONS AND WEIGHT/WORKING CURVES
 ■ AUSMAß UND GEWICHTE/FUNKTIONSKURVEN ■ DIMENSIONES QUE OCUPA Y PESOS/CURVAS DE FUNCIONAMIENTO

RM310

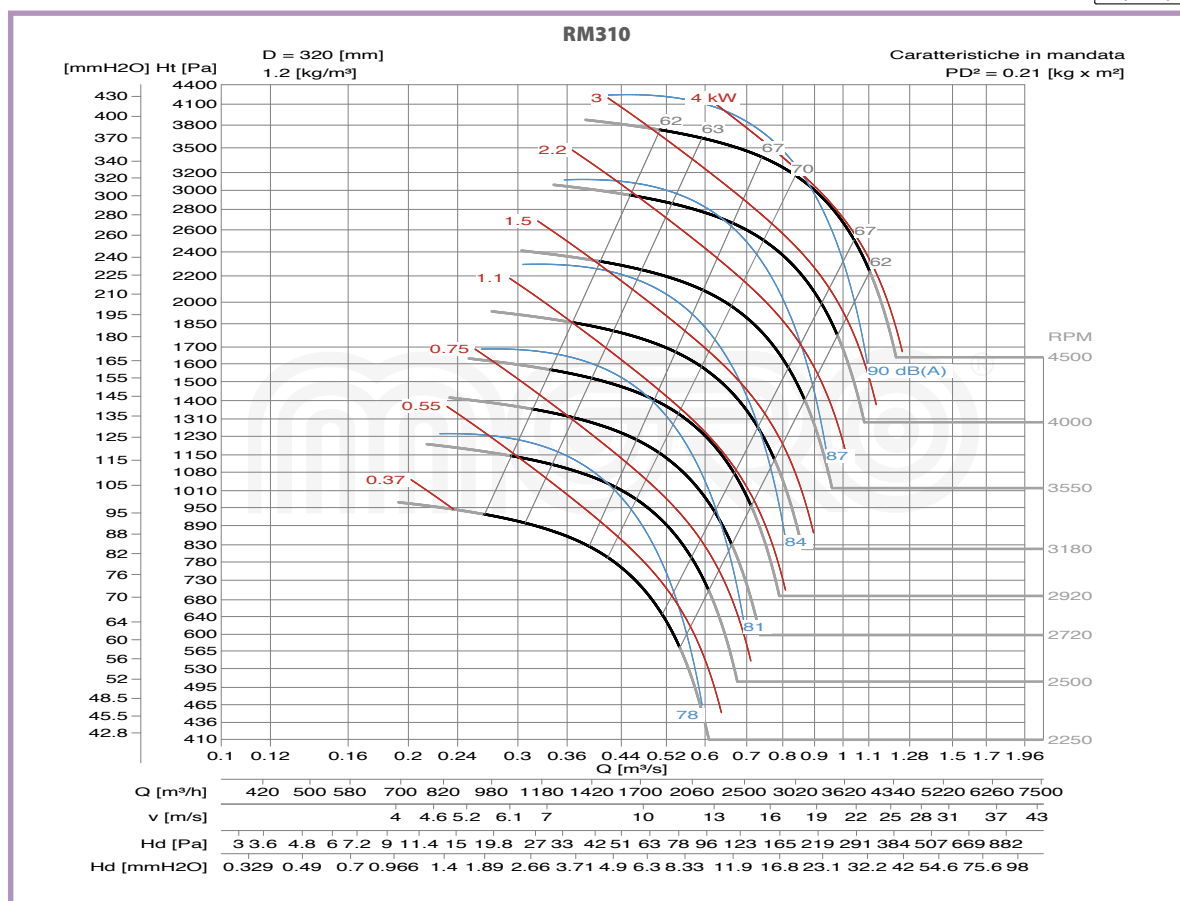
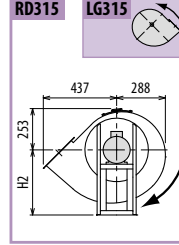
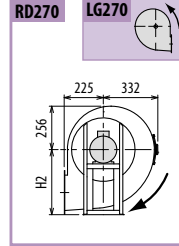
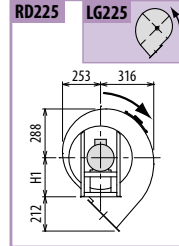
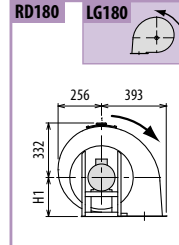
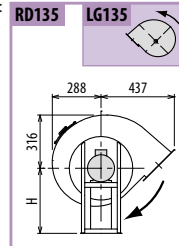
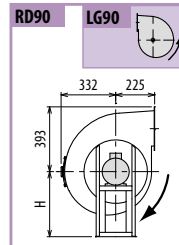
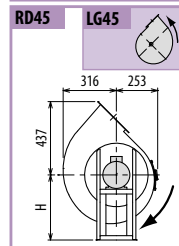
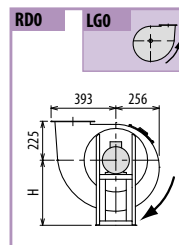
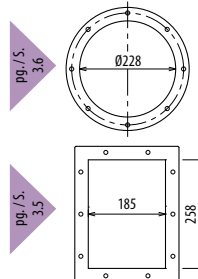


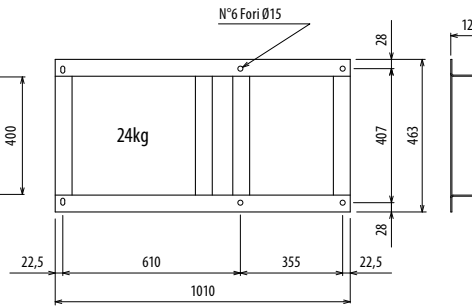
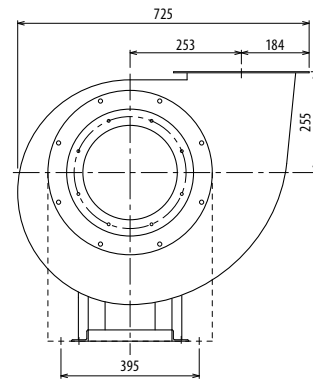
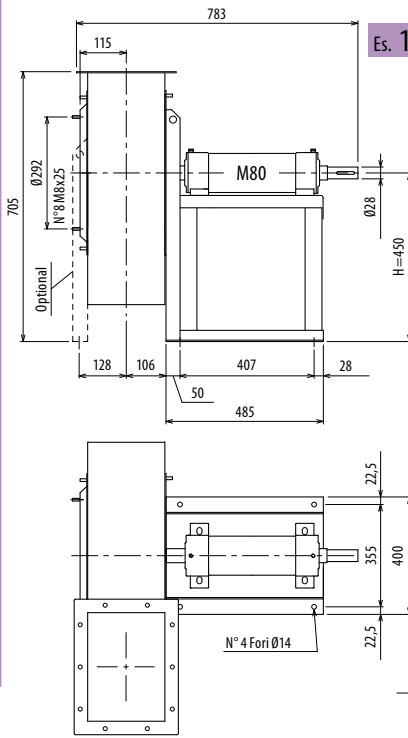
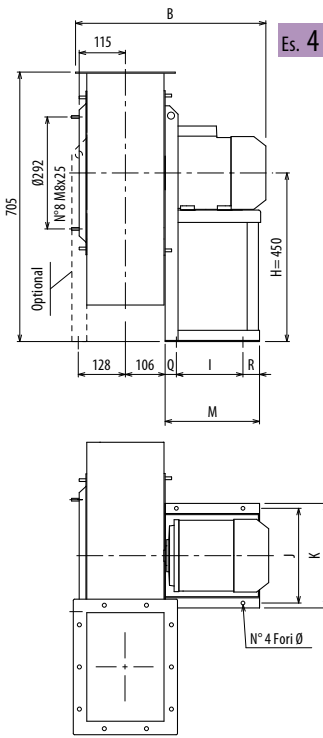
Il ventilatore è orientabile - Peso in tabella comprensivo di motore

- Le ventilateur est orientable
 - The fan is revolvable
 - Der Ventilator ist drehbar
 - El ventilador es orientable
- Le poids dans le tableau inclut le moteur The weight indicated in the table includes motor Gewichtsangabe in Tabelle inkl. Motor El peso en la tabla incluye el motor

Ulteriori informazioni e quote:
 ■ Ulérieures informations et cotes:
 ■ Further information and sizes:
 ■ Weitere Infos und Größen:
 ■ Más informaciones y medidas:

TIPO - Type		PESO Weight	PD ²	B	I	H	H1	H2	J	K	M	Q	R	Ø
VENTILATORE Fan	MOTORE Motor	Kg	Kgf x m ²											
RM310/2R	80 B2	42	0,19	458	121	400	225	400	203	225	211	45	45	10
RM310/2	90 S2	45	0,21	505	133	400	225	400	234	260	246	55	58	10
RM310/T		45	0,21			400	225	400						



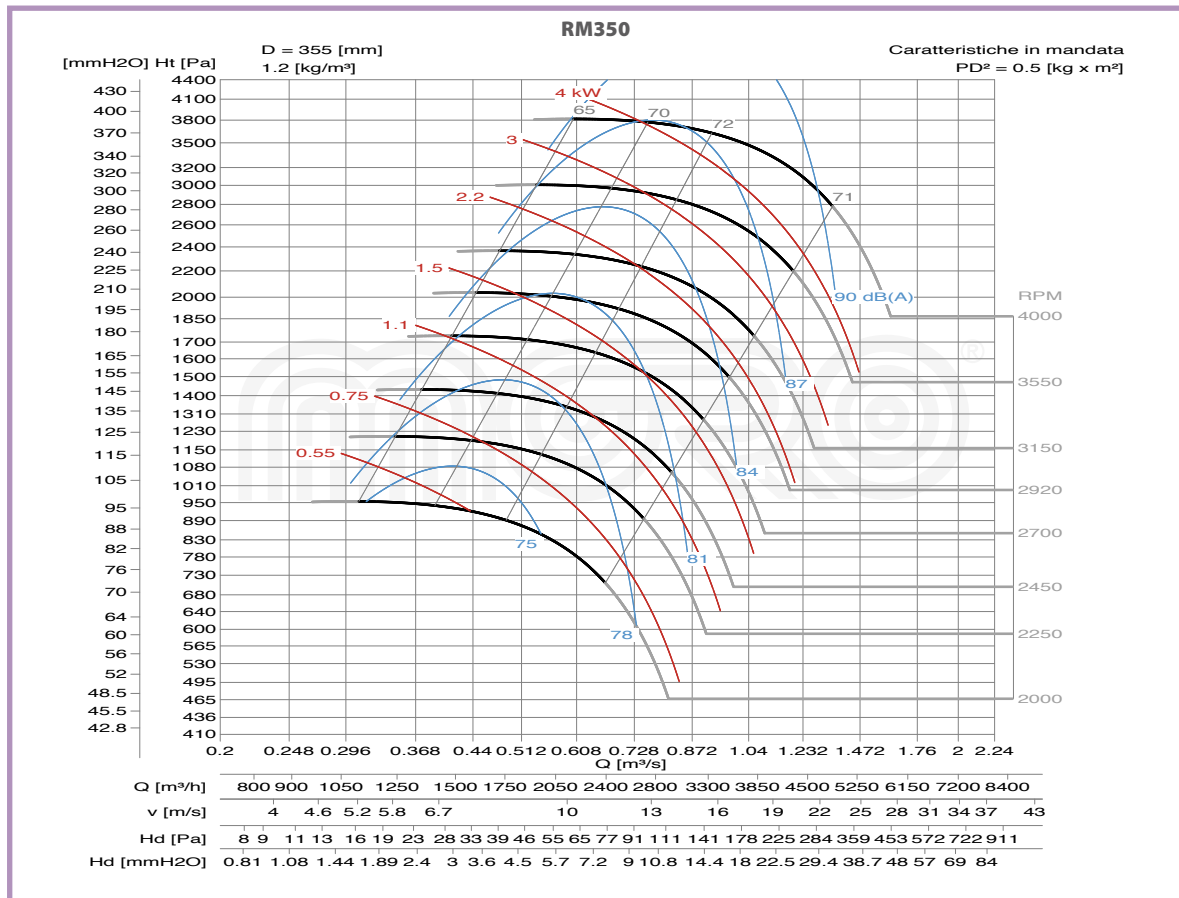
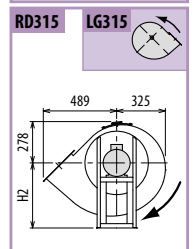
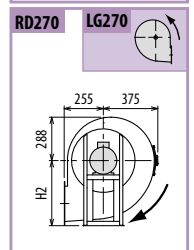
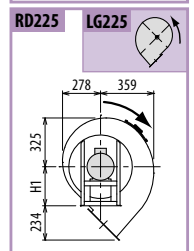
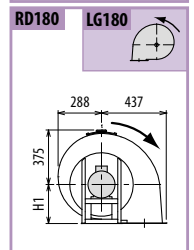
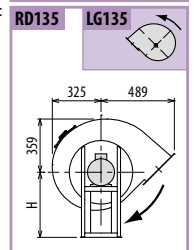
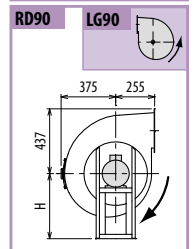
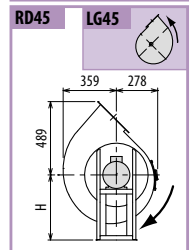
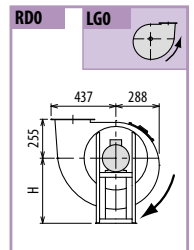
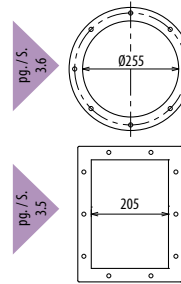


Il ventilatore è orientabile - Peso in tabella comprensivo di motore

- Le ventilateur est orientable
- The fan is revolvable
- Der Ventilator ist drehbar
- El ventilador es orientable
- Le poids dans le tableau inclut le moteur
- The weight indicated in the table includes motor
- Gewichtsangabe in Tabelle inkl. Motor
- El peso en la tabla incluye el motor

Ulteriori informazioni e quote:
 ■ Ulérieures informations et cotes:
 ■ Further information and sizes:
 ■ Weitere Infos und Größen:
 ■ Más informaciones y medidas:

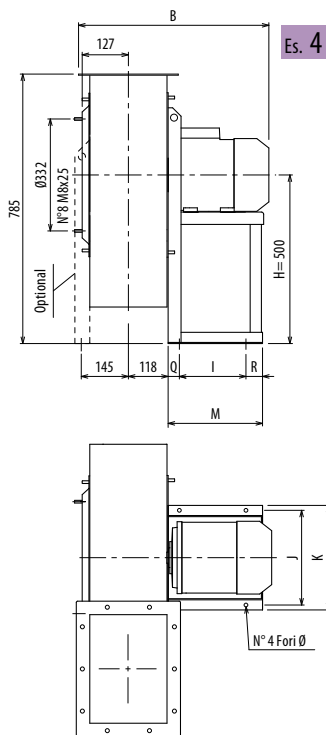
TIPO - Type		PESO Weight	PD ²	B	I	H	H1	H2	J	K	M	Q	R	Ø
VENTILATORE Fan	MOTORE Motor	Kg	Kgf x m ²											
RM350/2R	90 S2	66	0,43	530	133	450	255	450	234	260	246	55	58	10
RM350/2	90 L2	70	0,50	530	133	450	255	450	234	260	246	55	58	10
RM350/T		75	0,50			450	255	450						



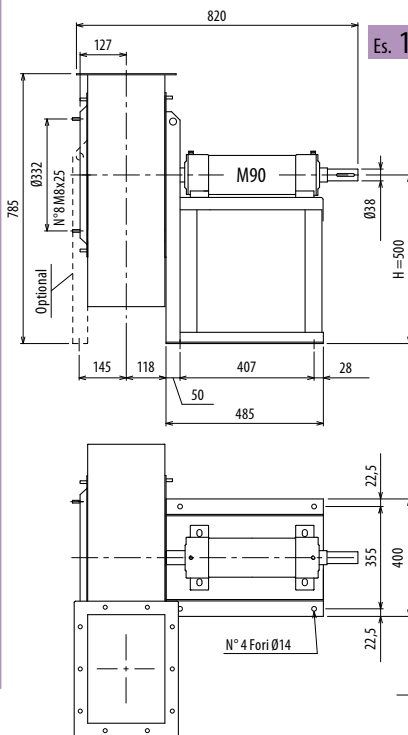
DIMENSIONI D'INGOMBRO E PESI/CURVE DI FUNZIONAMENTO

■ DIMENSIONS D'ENCOMBREMENT ET POIDS/COURBES DE FONCTIONNEMENT ■ OVERALL DIMENSIONS AND WEIGHT/WORKING CURVES
 ■ AUSMAß UND GEWICHTE/FUNKTIONSKURVEN ■ DIMENSIONES QUE OCUPA Y PESOS/CURVAS DE FUNCIONAMIENTO

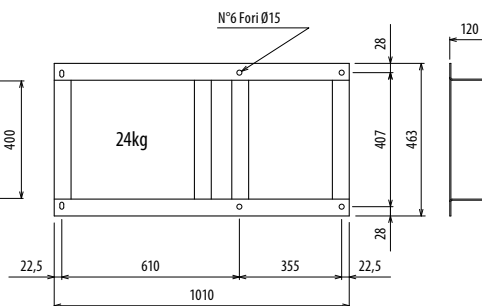
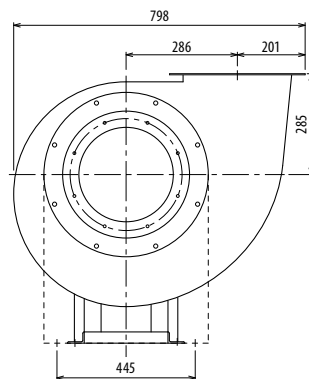
RM400



Es. 4



Es. 1

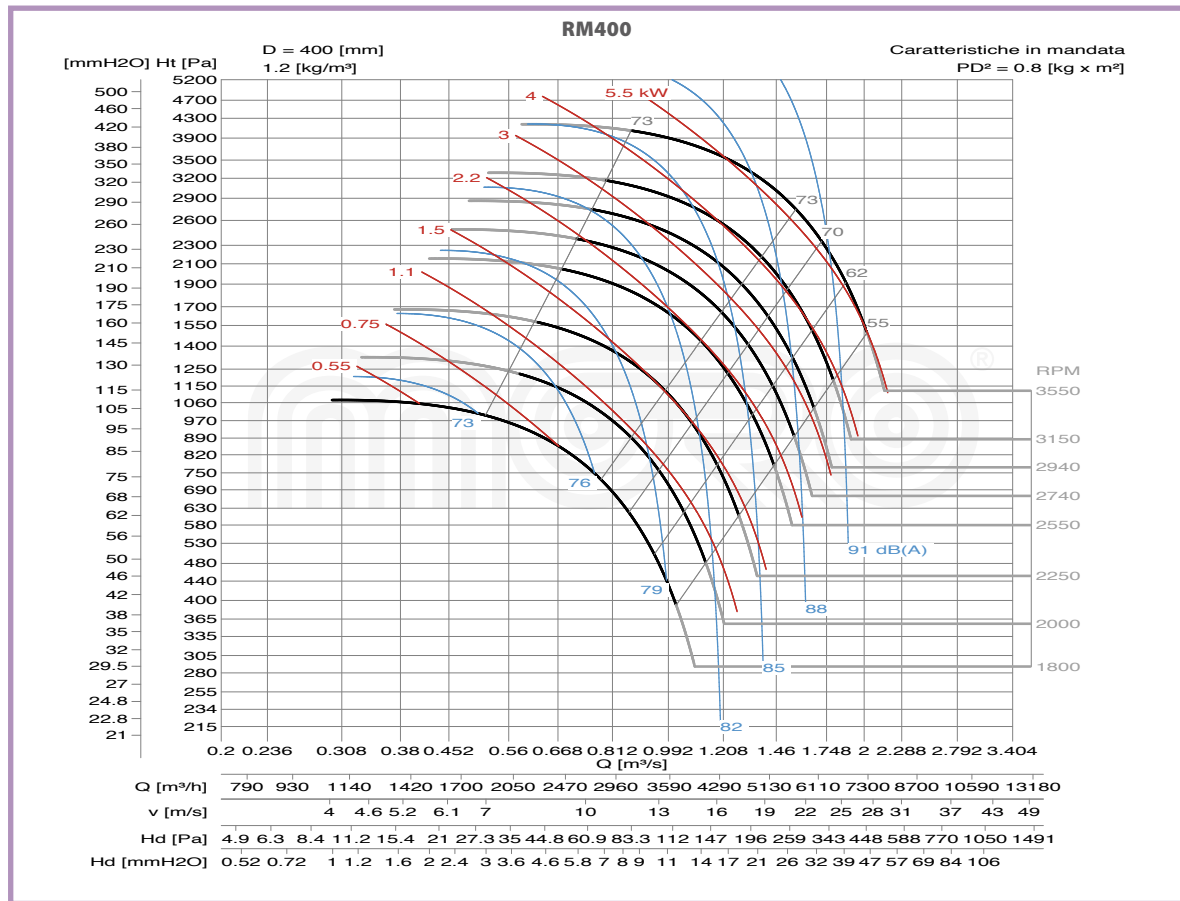
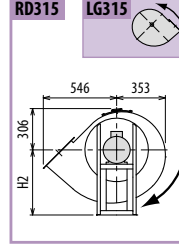
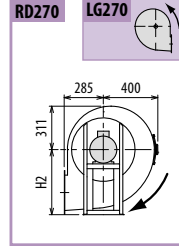
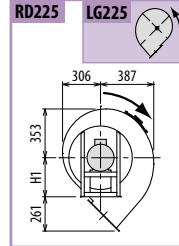
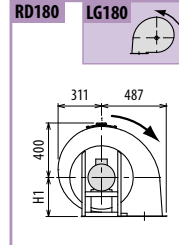
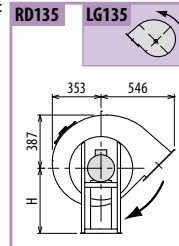
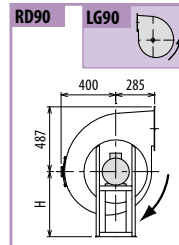
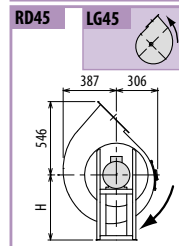
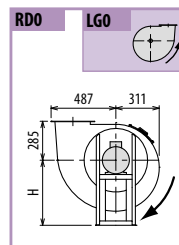
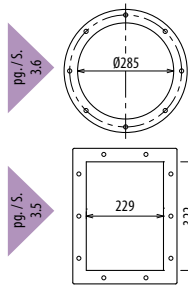


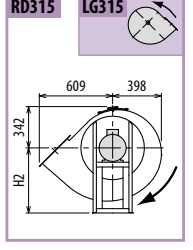
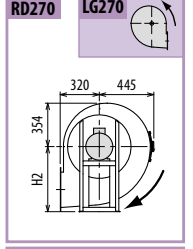
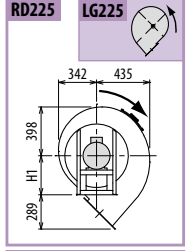
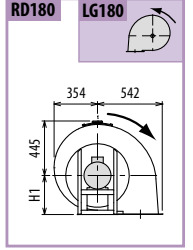
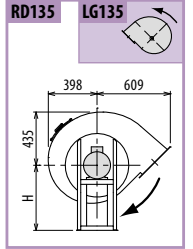
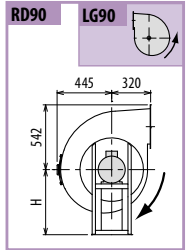
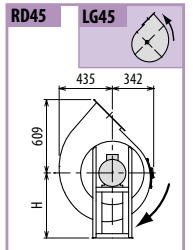
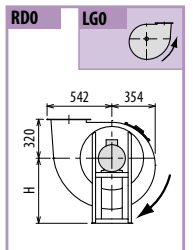
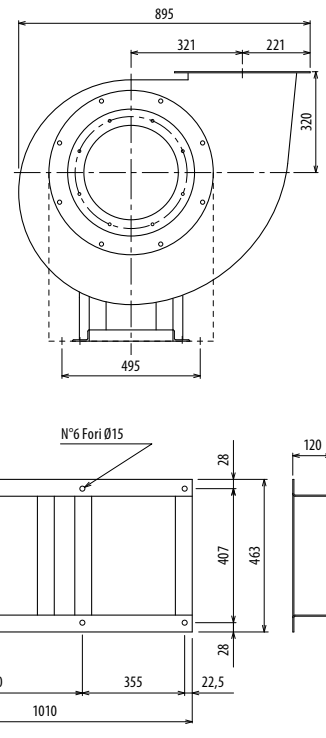
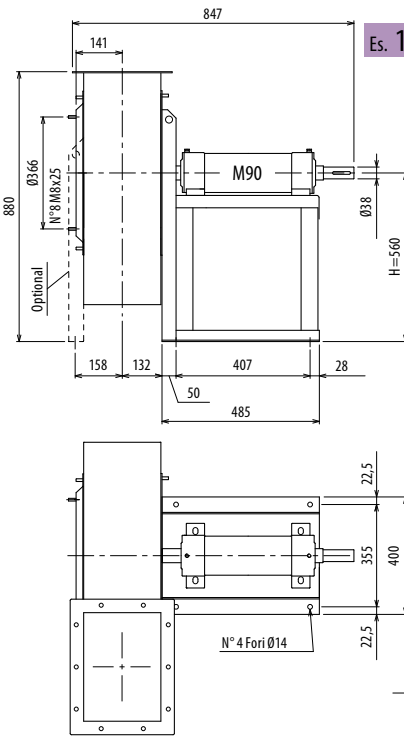
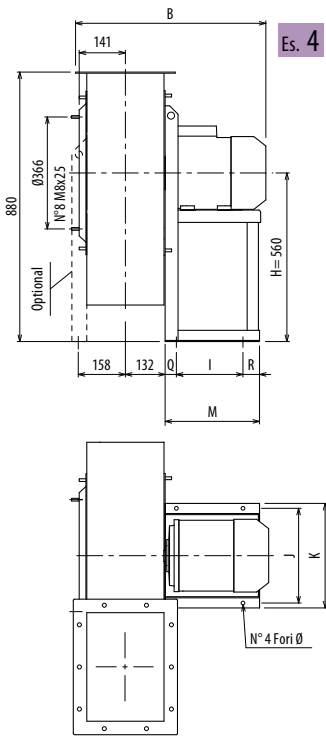
Il ventilatore è orientabile - Peso in tabella comprensivo di motore

- Le ventilateur est orientable
 - The fan is revolvable
 - Der Ventilator ist drehbar
 - El ventilador es orientable
- The weight indicated in the table includes motor Gewichtsangabe in Tabelle inkl. Motor El peso en la tabla incluye el motor

Ulteriori informazioni e quote:
 ■ Ulérieures informations et cotes:
 ■ Further information and sizes:
 ■ Weitere Infos und Größen:
 ■ Más informaciones y medidas:

TIPO - Type		PESO Weight	PD ²	B	I	H	H1	H2	J	K	M	Q	R	Ø
VENTILATORE Fan	MOTORE Motor	Kg	Kgf x m ²											
RM400/2R	100 L2	85	0,70	585	197	500	285	500	289	324	276	30	49	12
RM400/2	112 M2	93	0,80	606	197	500	285	500	289	324	276	30	49	12
RM400/T		86	0,80			500	285	500						



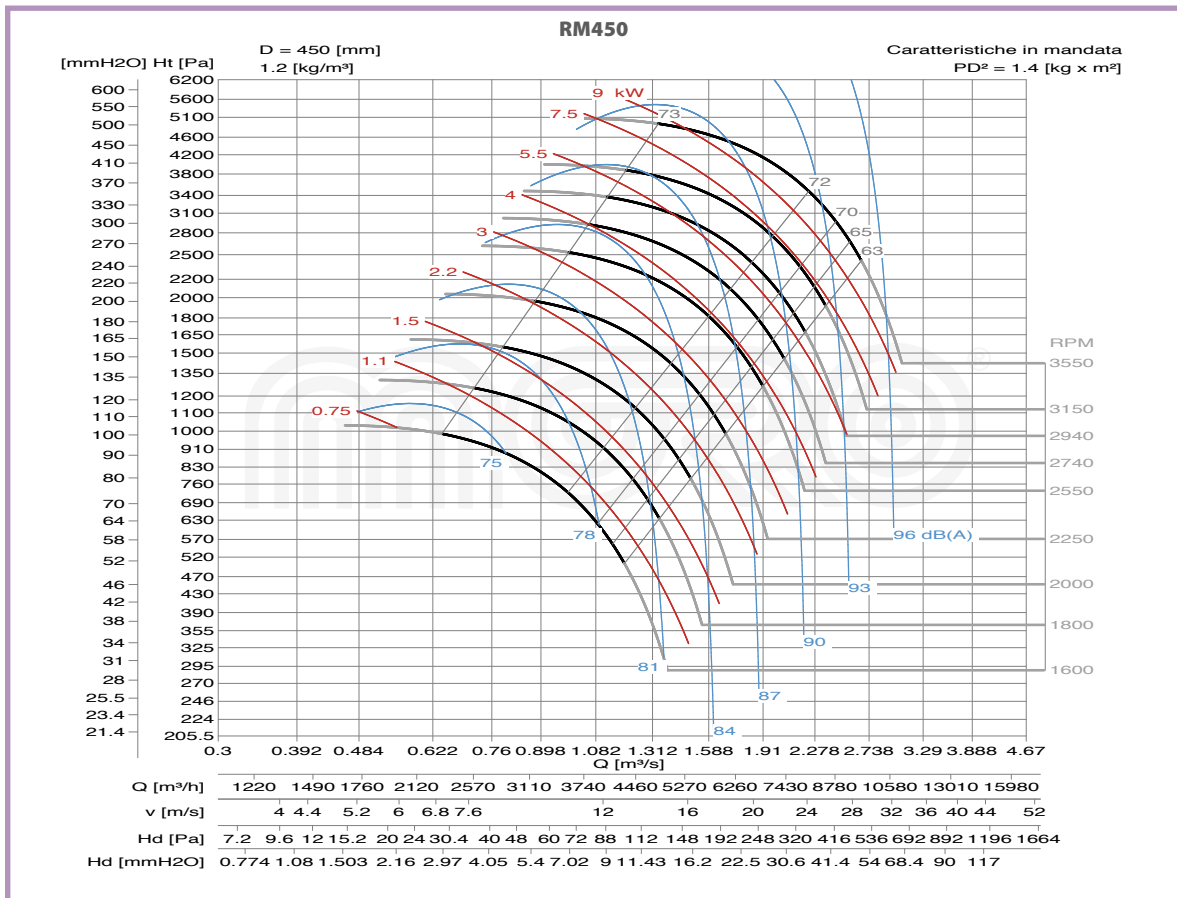
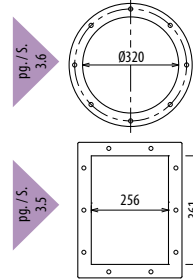


Il ventilatore è orientabile • Peso in tabella comprensivo di motore

- Le ventilateur est orientable
 - The fan is revolvable
 - Der Ventilator ist drehbar
 - El ventilador es orientable
- Le poids dans le tableau inclut le moteur The weight indicated in the table includes motor Gewichtsangabe in Tabelle inkl. Motor El peso en la tabla incluye el motor

Ulteriori informazioni e quote:
 ■ Ulérieures informations et cotes:
 ■ Further information and sizes:
 ■ Weitere Infos und Größen:
 ■ Más informaciones y medidas:

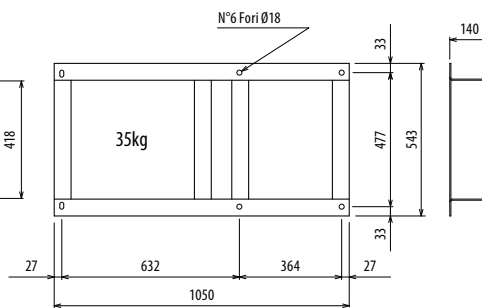
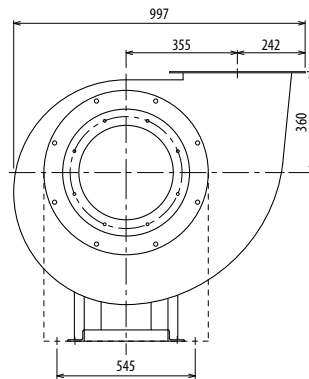
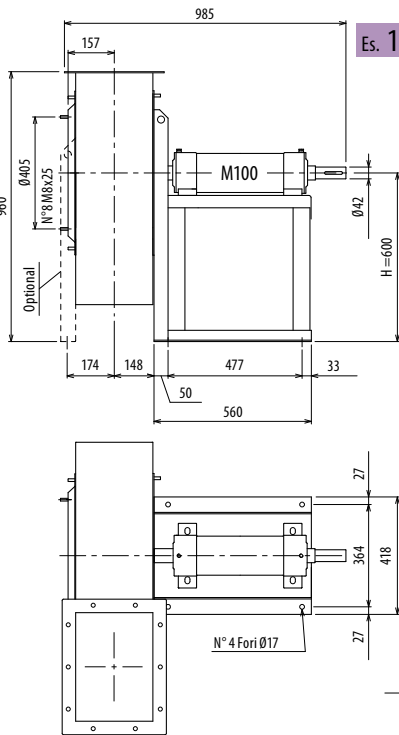
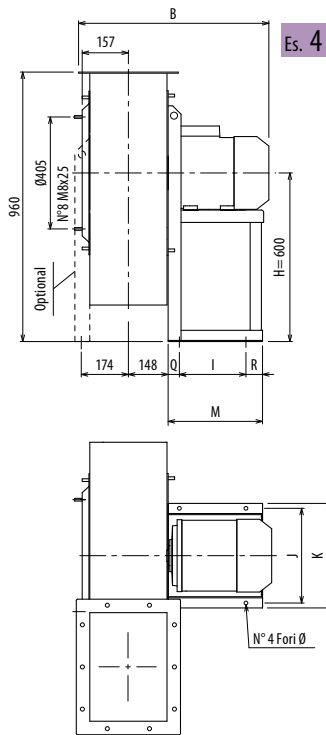
TIPO - Type		PESO Weight	PD²											
VENTILATORE Fan	MOTORE Motor	Kg	Kgf x m²	B	I	H	H1	H2	J	K	M	Q	R	Ø
RM450/2R	132 SA2	115	1,2	673	237	560	320	560	337	372	336	40	59	12
RM450/2	132 SB2	118	1,4	673	237	560	320	560	337	372	336	40	59	12
RM450/T		98	1,4			560	320	560						



DIMENSIONI D'INGOMBRO E PESI/CURVE DI FUNZIONAMENTO

■ DIMENSIONS D'ENCOMBREMENT ET POIDS/COURBES DE FONCTIONNEMENT ■ OVERALL DIMENSIONS AND WEIGHT/WORKING CURVES
 ■ AUSMAß UND GEWICHTE/FUNKTIONSKURVEN ■ DIMENSIONES QUE OCUPA Y PESOS/CURVAS DE FUNCIONAMIENTO

RM500

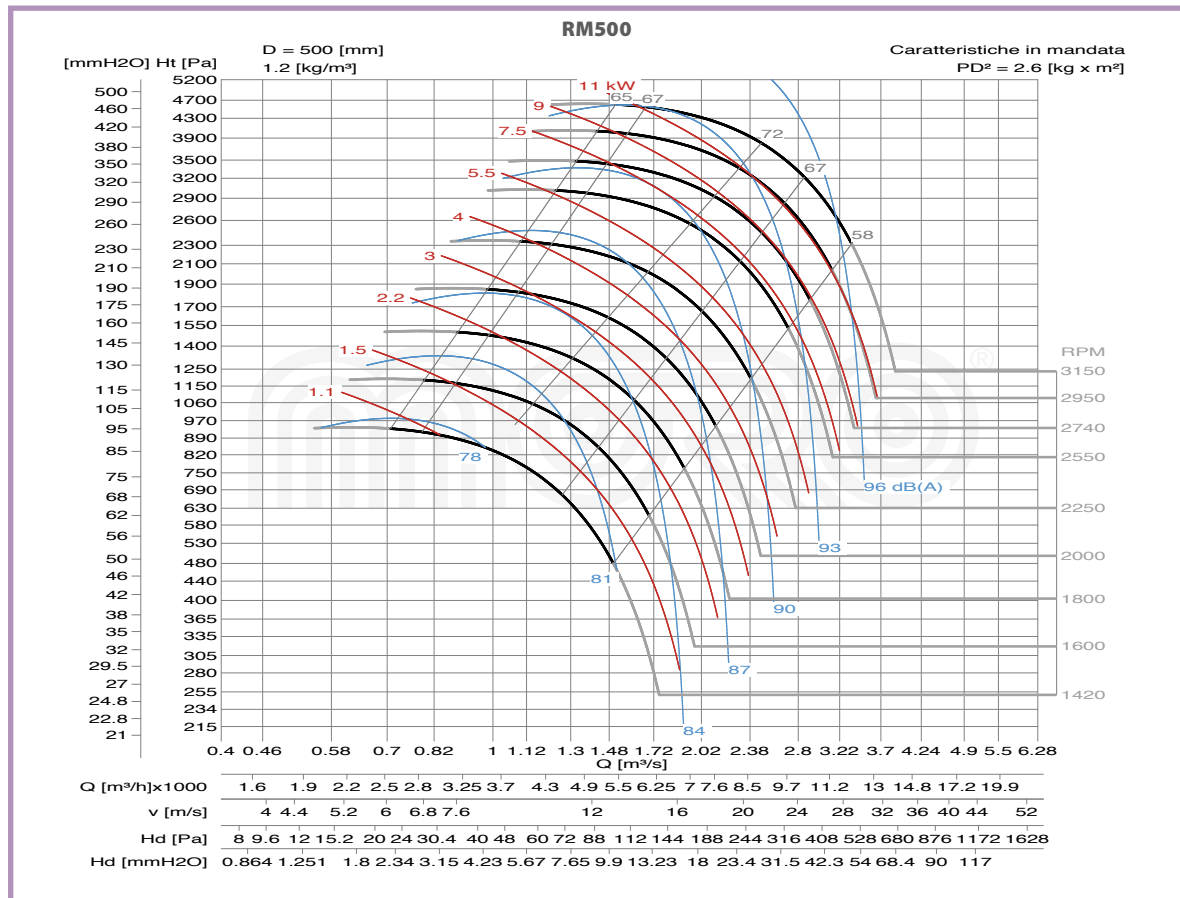
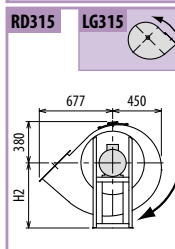
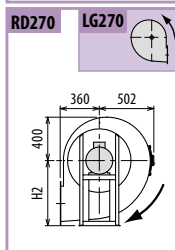
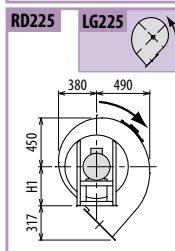
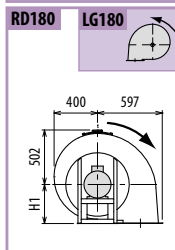
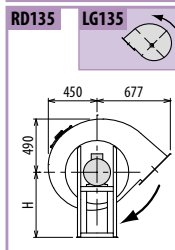
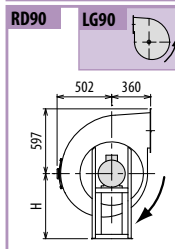
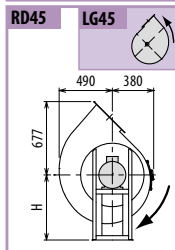
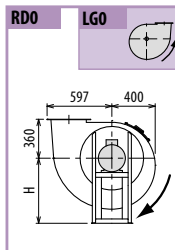
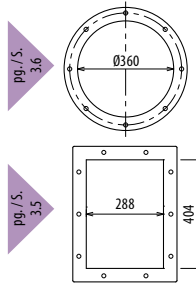


Il ventilatore è orientabile - Peso in tabella comprensivo di motore

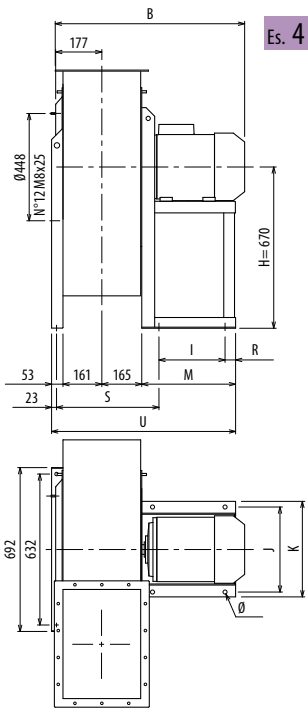
- Le ventilateur est orientable
- The fan is revoluble
- Der Ventilator ist drehbar
- El ventilador es orientable
- Further information and quotes:
- Weitere Infos und Größen:
- Más informaciones y medidas:

TIPO - Type		PESO Weight	PD ²	B	I	H	H1	H2	J	K	M	Q	R	Ø
VENTILATORE Fan	MOTORE Motor	Kg	Kgf x m ²											
RM500/2R	160 M2	175	2,3	810	337	600	360	600	395	440	436	50	49	14
RM500/2	160 M2	180	2,6	810	337	600	360	600	395	440	436	50	49	14
RM500/4R	90 S4	100	2,1	613	133	600	360	600	234	260	246	55	58	10
RM500/4	90 L4	106	2,2	613	133	600	360	600	234	260	246	55	58	10
RM500/T		115	2,6			600	360	600						

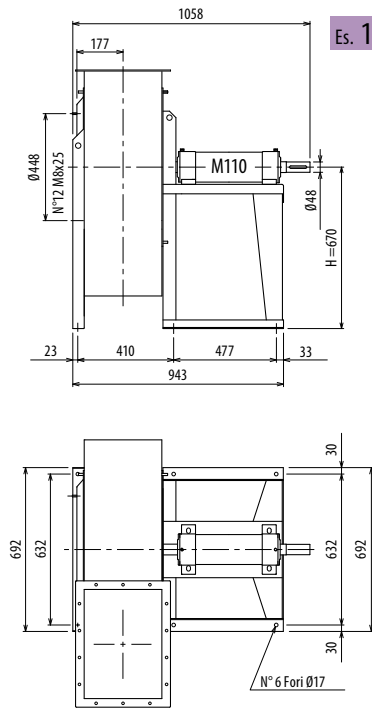
Ulteriori informazioni e quote:
 ■ Ulérieures informations et cotes:
 ■ Further information and sizes:
 ■ Weitere Infos und Größen:
 ■ Más informaciones y medidas:



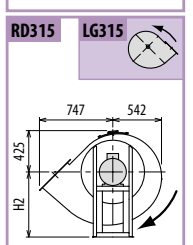
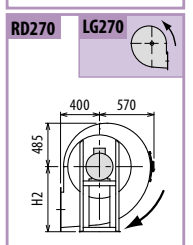
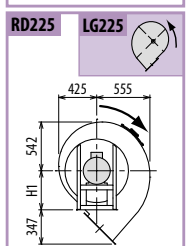
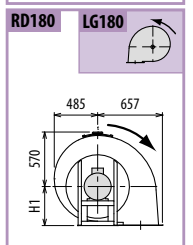
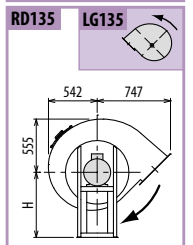
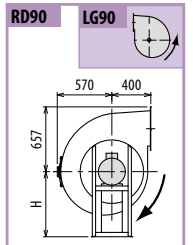
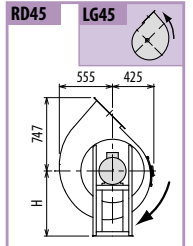
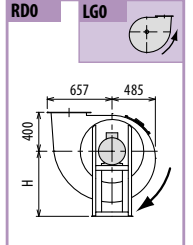
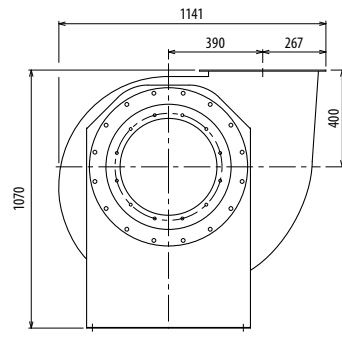
RM



Es. 4



Es. 1



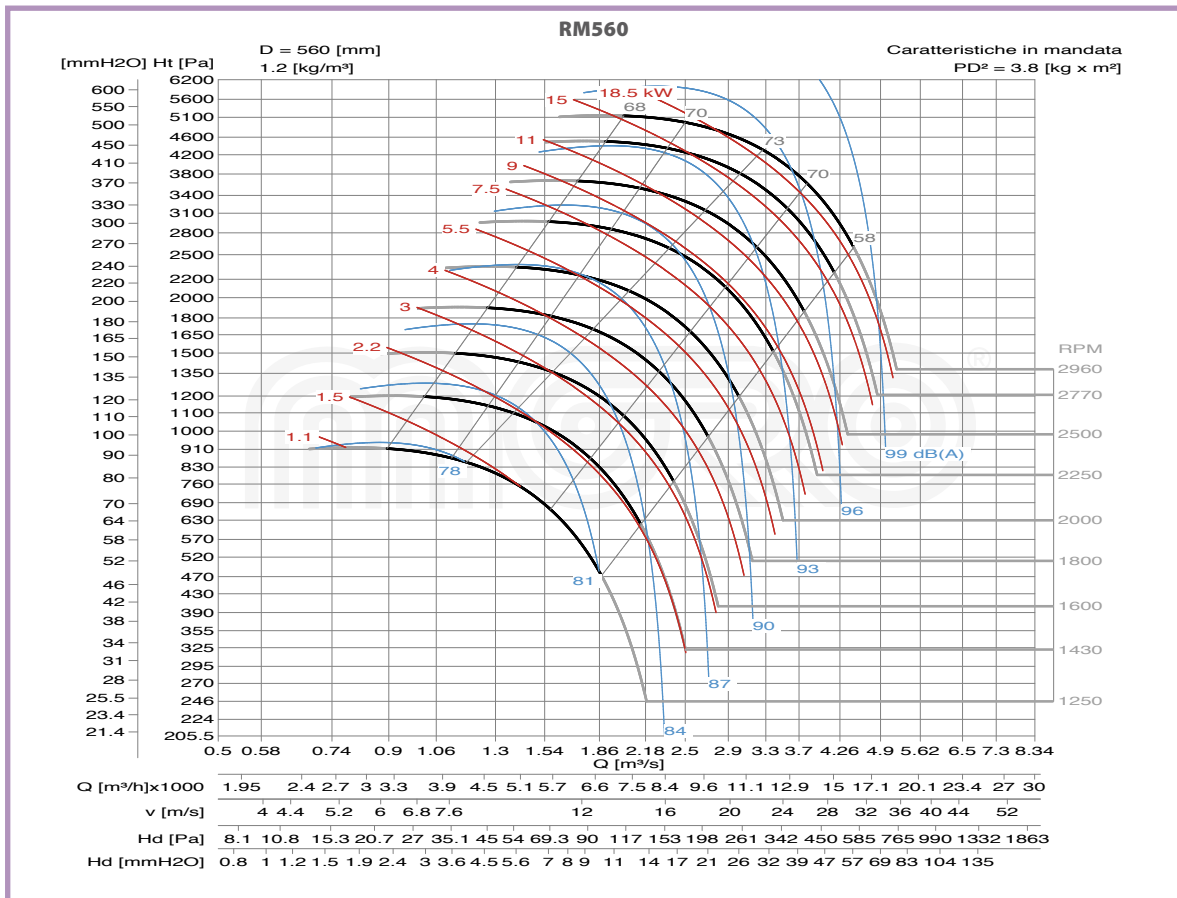
Il ventilatore è orientabile - Peso in tabella comprensivo di motore

- Le ventilateur est orientable
- The fan is revoluble
- Der Ventilator ist drehbar
- El ventilador es orientable
- Further information and sizes:
- Weitere Infos und Größen:
- Más informaciones y medidas:

Ulteriori informazioni e quote:
 ■ Further information and sizes:
 ■ Weitere Infos und Größen:
 ■ Más informaciones y medidas:

TIPO - Type		PESO Weight	PD ²	B	I	H	H1	H2	J	K	M	R	S	U	Ø
VENTILATORE Fan	MOTORE Motor	Kg	Kgf x m ²												
RM560/2R	160 L2	220	3,4	857	337	670	400	670	395	440	436	49	406	815	14
RM560/2	180 M2	276	3,8	938	357	670	400	670	434	488	460	33	426	839	17
RM560/4R	100 LA4	128	3,2	691	197	670	400	670	289	324	276	49	386	655	12
RM560/4	100 LB4	136	3,3	691	197	670	400	670	289	324	276	49	386	655	12
RM560/T		194	3,8			670	400	670							

pg. / s. 3,6
 pg. / s. 3,5



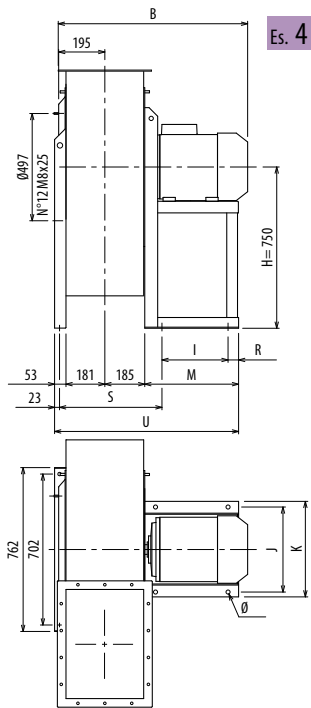
RM

DIMENSIONI D'INGOMBRO E PESI/CURVE DI FUNZIONAMENTO

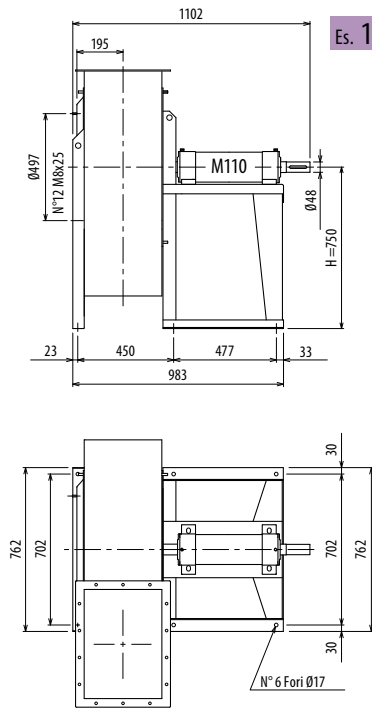
RM630



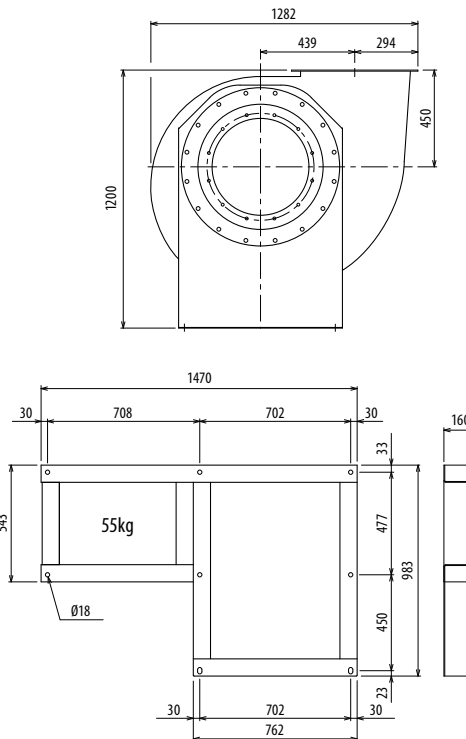
■ DIMENSIONS D'ENCOMBREMENT ET POIDS/COURBES DE FONCTIONNEMENT ■ OVERALL DIMENSIONS AND WEIGHT/WORKING CURVES
 ■ AUSMAßE UND GEWICHTE/FUNKTIONSKURVEN ■ DIMENSIONES QUE OCUPA Y PESOS/CURVAS DE FUNCIONAMIENTO



Es. 4



Es. 1



Il ventilatore è orientabile - Peso in tabella comprensivo di motore

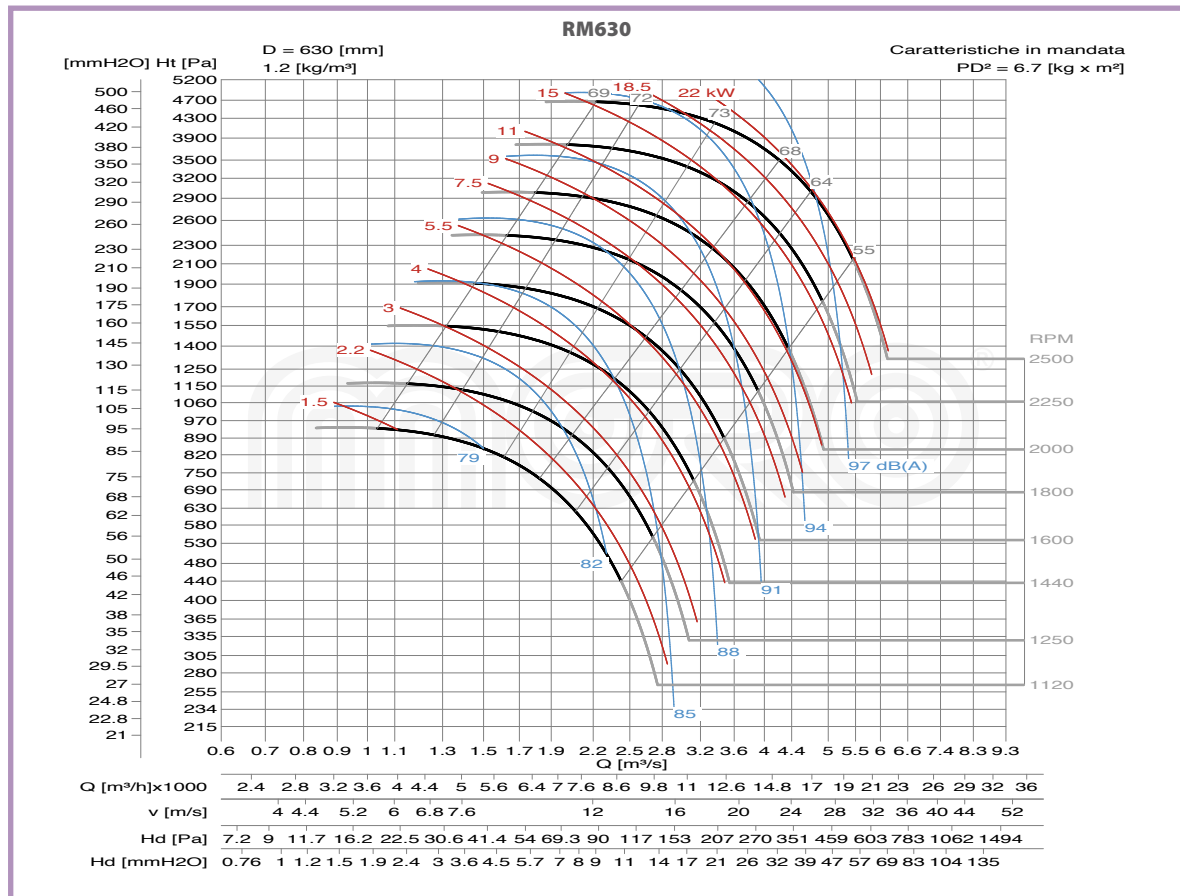
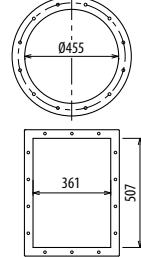
- Le ventilateur est orientable ■ The fan is revoluble ■ Der Ventilator ist drehbar ■ El ventilador es orientable
- Le poids dans le tableau inclut le moteur ■ The weight indicated in the table includes motor ■ Gewichtsangabe in Tabelle inkl. Motor ■ El peso en la tabla incluye el motor

Ulteriori informazioni e quote:
 ■ Ulérieures informations et cotes:
 ■ Further information and sizes:
 ■ Weitere Infos und Größen:
 ■ Más informaciones y medidas:

TIPO - Type		PESO Weight	PD ²	B	I	H	H1	H2	J	K	M	R	S	U	Ø
VENTILATORE Fan	MOTORE Motor	Kg	Kgf x m ²												
RM630/4R	112 M4	190	5,6	752	197	750	450	750	289	324	276	49	425	694	12
RM630/4	132 S4	205	6,3	792	237	750	450	750	337	372	336	59	435	754	12
RM630/T		229	6,7			750	450	750							

pg. / s. 3.6

pg. / s. 3.5



RD0 LG0

RD45 LG45

RD90 LG90

RD135 LG135

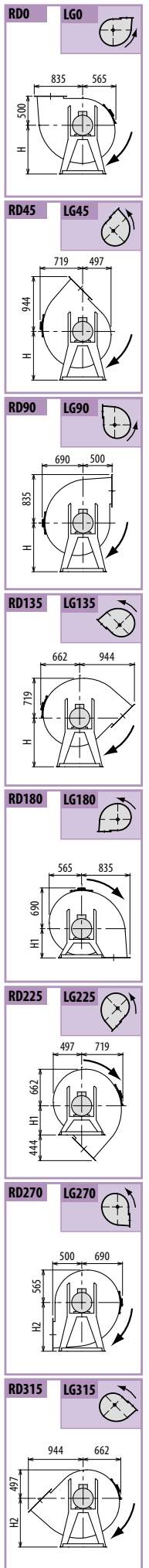
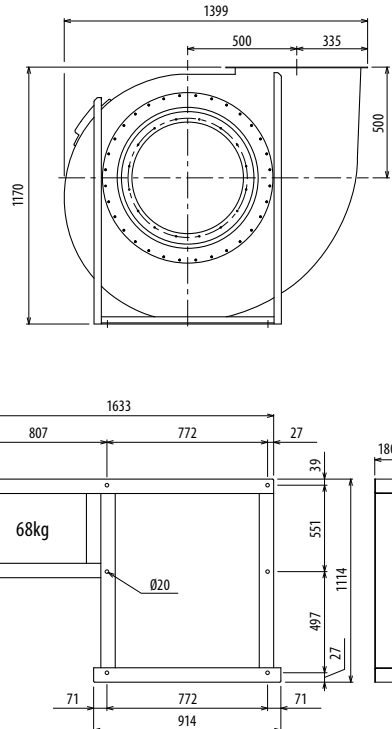
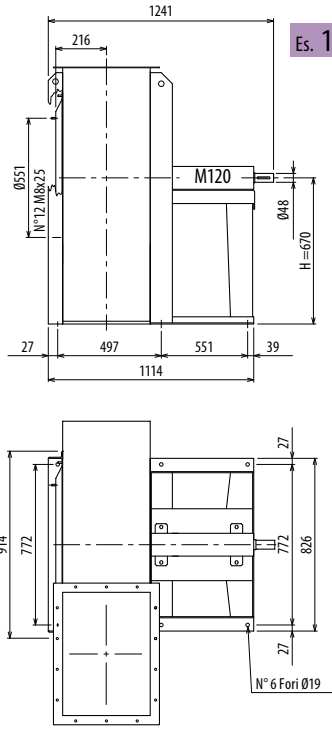
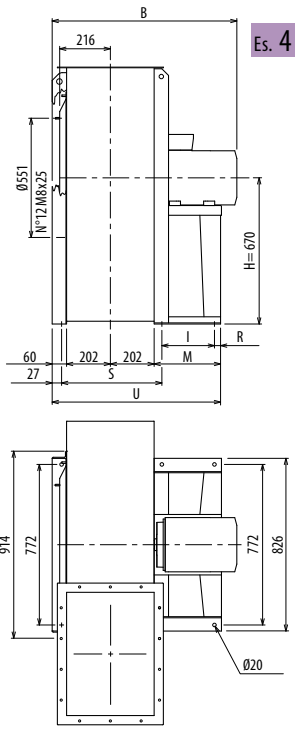
RD180 LG180

RD225 LG225

RD270 LG270

RD315 LG315

RM

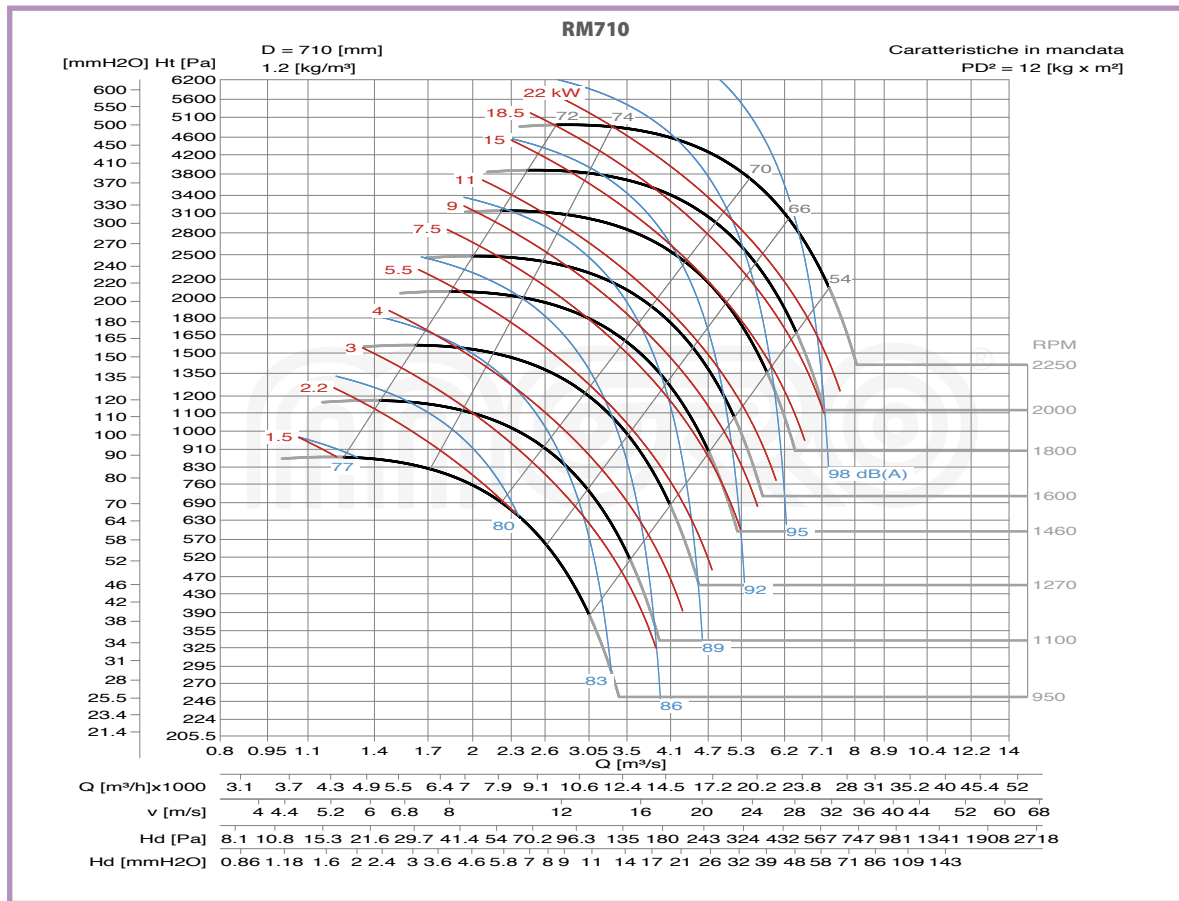
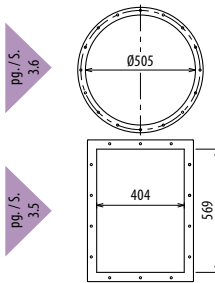


Il ventilatore non è orientabile • Peso in tabella comprensivo di motore

- Le ventilateur n'est pas orientable
- The fan is not revolvable
- Der Ventilator ist nicht drehbar
- El ventilador no es orientable
- Further information and sizes: ■ Weitere Infos und Größen: ■ Más informaciones y medidas:

TIPO - Type		PESO Weight	PD ²									
VENTILATORE Fan	MOTORE Motor	Kg	Kgf x m ²	B	I	H	H1	H2	R	S	M	U
RM710/4R	132 M4	287	10	837	201	670	500	850	75	497	336	800
RM710/4	160 M4	338	11	942	316	670	500	850	60	497	436	900
RM710/T		346	12			670	500	850				

Ulteriori informazioni e quote:
 ■ Ulérieures informations et cotes:
 ■ Further information and sizes:
 ■ Weitere Infos und Größen:
 ■ Más informaciones y medidas:

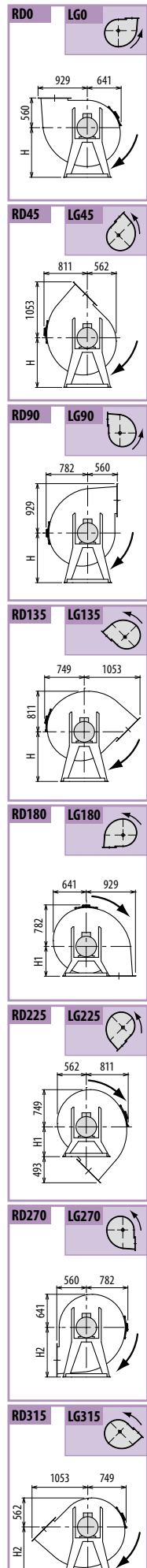
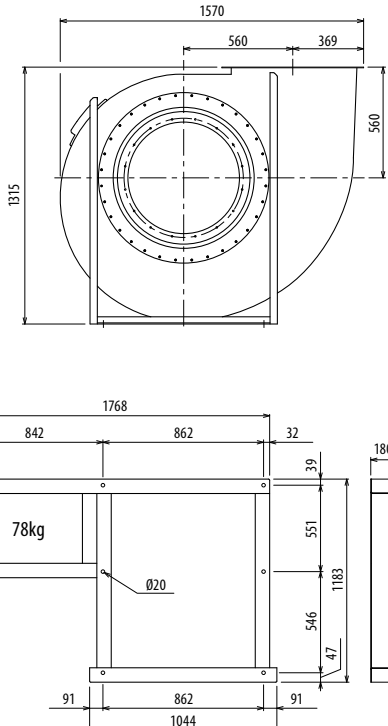
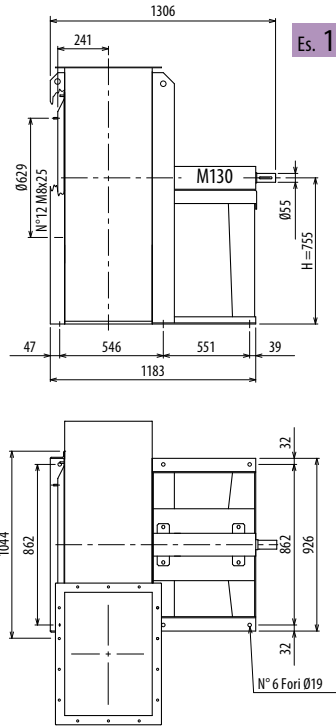
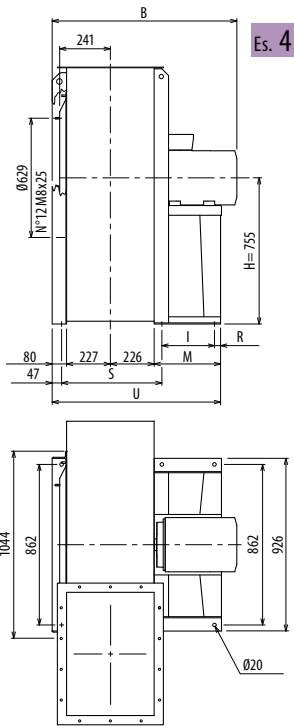


DIMENSIONI D'INGOMBRO E PESI/CURVE DI FUNZIONAMENTO

RM800



■ DIMENSIONS D'ENCOMBREMENT ET POIDS/COURBES DE FONCTIONNEMENT ■ OVERALL DIMENSIONS AND WEIGHT/WORKING CURVES
 ■ AUSMAß UND GEWICHTE/FUNKTIONSKURVEN ■ DIMENSIONES QUE OCUPA Y PESOS/CURVAS DE FUNCIONAMIENTO



Il ventilatore non è orientabile • Peso in tabella comprensivo di motore

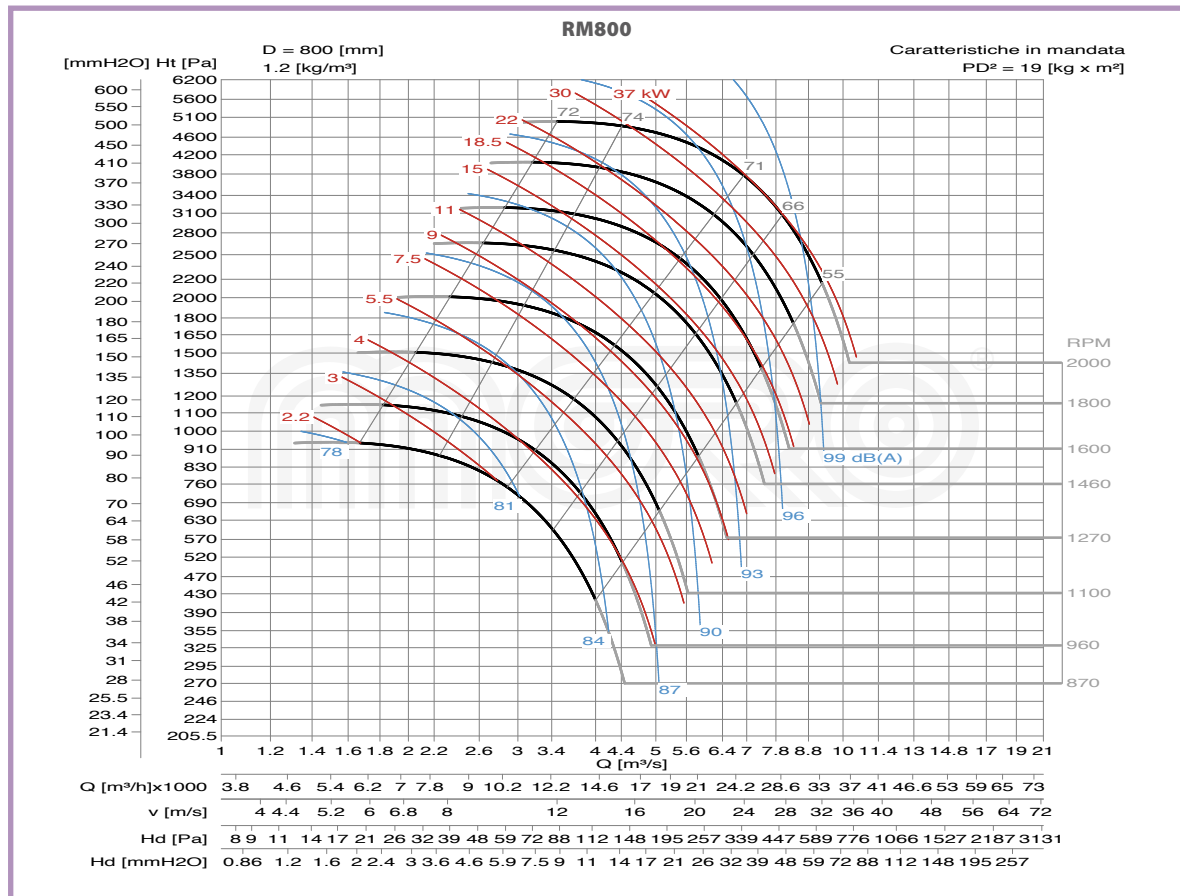
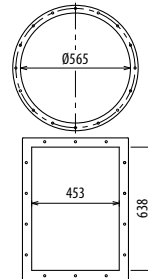
■ Le ventilateur n'est pas orientable ■ The fan is not revolvable ■ Der Ventilator ist nicht drehbar ■ El ventilador no es orientable
 Le poids dans le tableau inclut le moteur The weight indicated in the table includes motor Gewichtsangabe in Tabelle inkl. Motor El peso en la tabla incluye el motor

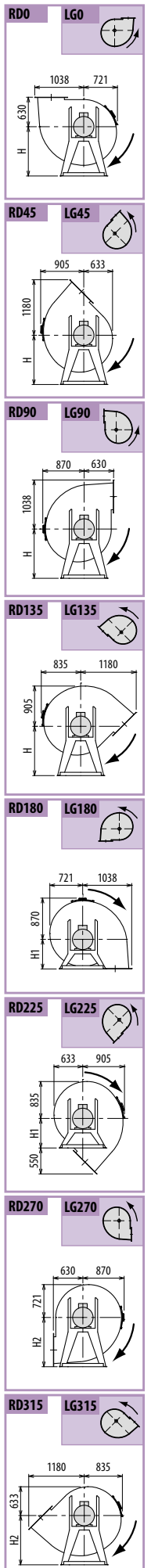
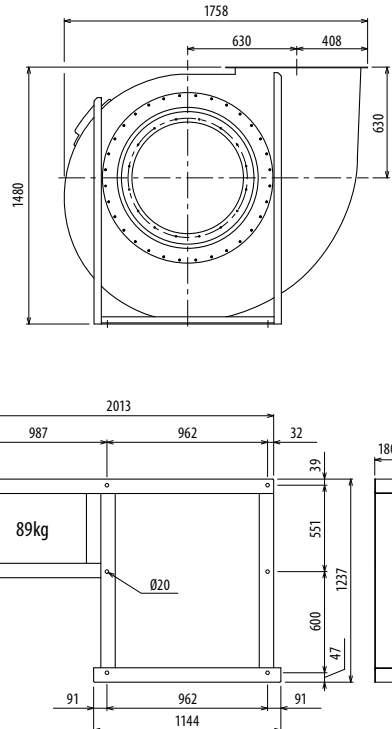
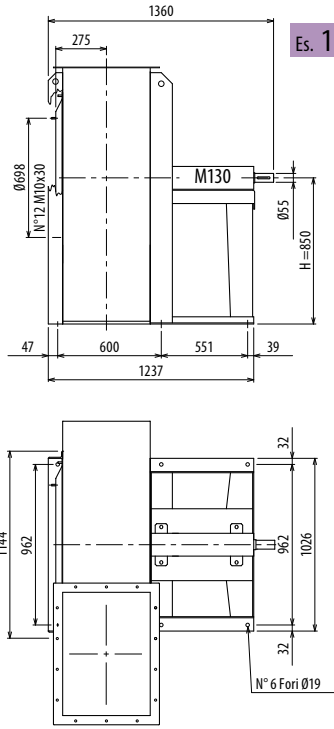
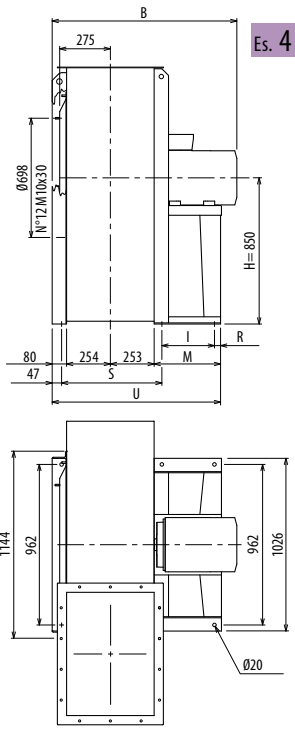
Ulteriori informazioni e quote:
 ■ Ulérieures informations et cotes:
 ■ Further information and sizes:
 ■ Weitere Infos und Größen:
 ■ Más informaciones y medidas:

TIPO - Type		PESO Weight	PD ²											
VENTILATORE Fan	MOTORE Motor	Kg	Kgf x m ²	B	I	H	H1	H2	R	S	M	U		
RM800/4R	160 L4	504	17	1011	315	755	560	950	60	546	436	968		
RM800/4	180 M4	512	19	1092	361	755	560	950	39	546	460	993		
RM800/6R	132 M6	391	16	906	201	755	560	950	75	546	336	869		
RM800/6	132 M6	395	18	906	201	755	560	950	75	546	336	869		
RM800/T		421	19			755	560	950						

pg. / s. 3.6

pg. / s. 3.5





Il ventilatore non è orientabile • Peso in tabella comprensivo di motore

■ Le ventilateur n'est pas orientable
 Le poids dans le tableau inclut le moteur

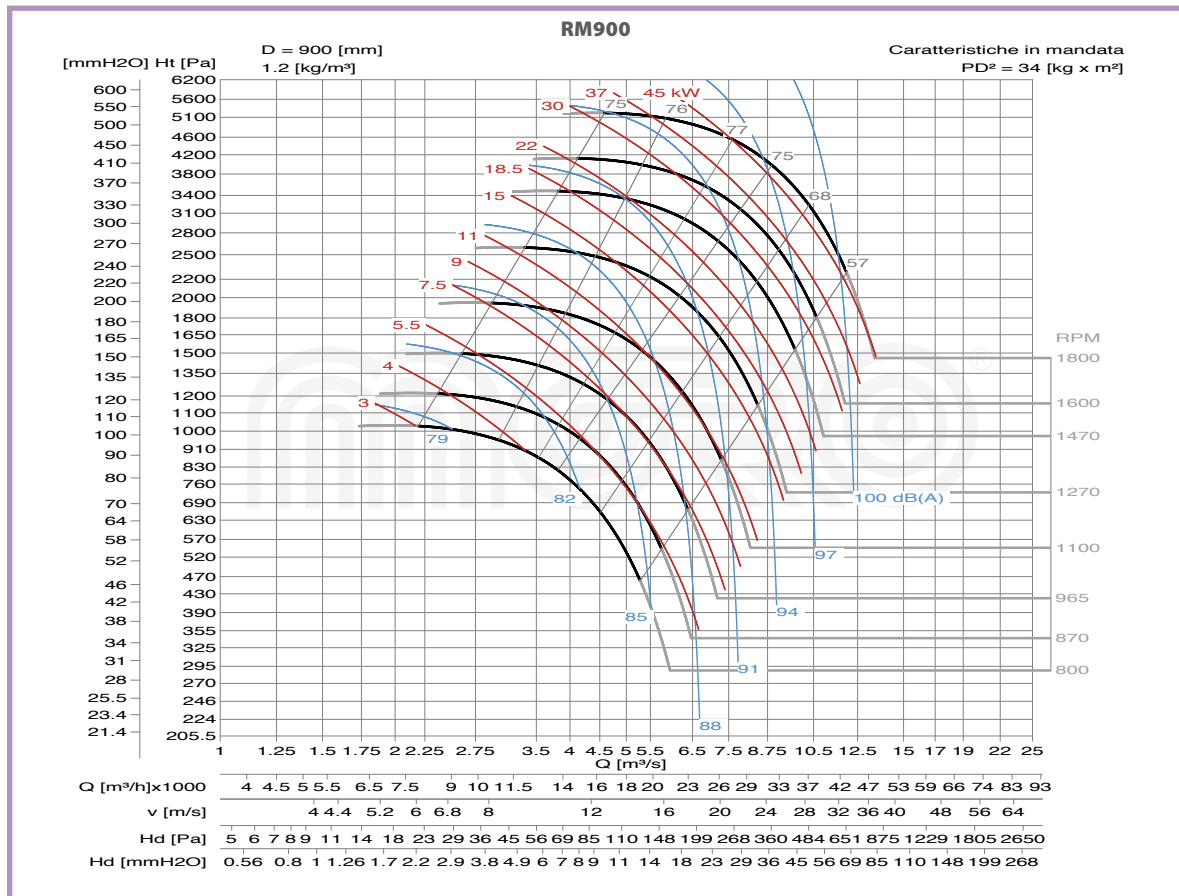
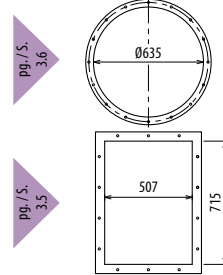
■ The fan is not revolvable
 The weight indicated in the table includes motor

■ Der Ventilator ist nicht drehbar
 Gewichtsangabe in Tabelle inkl. Motor

■ El ventilador no es orientable
 El peso en la tabla incluye el motor

Ulteriori informazioni e quote:
 ■ Ulérieures informations et cotes:
 ■ Further information and sizes:
 ■ Weitere Infos und Größen:
 ■ Más informaciones y medidas:

TIPO - Type		PESO Weight Kg	PD ² Kgf x m ²	B	I	H	H1	H2	R	S	M	U
VENTILATORE Fan	MOTORE Motor											
RM900/4R	200 L4	684	30	1254	401	850	630	1060	39	600	500	1087
RM900/4	225 S4	767	34	1236	441	850	630	1060	39	600	540	1127
RM900/6R	160 M6	511	29	1065	316	850	630	1060	60	600	436	1023
RM900/6	160 L6	531	33	1065	316	850	630	1060	60	600	436	1023
RM900/T		517	34			850	630	1060				

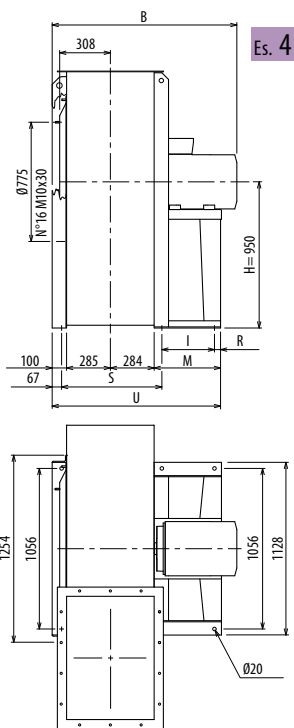


DIMENSIONI D'INGOMBRO E PESI/CURVE DI FUNZIONAMENTO

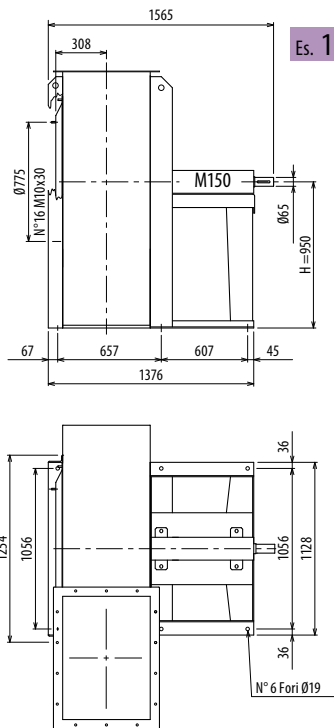
RM1000



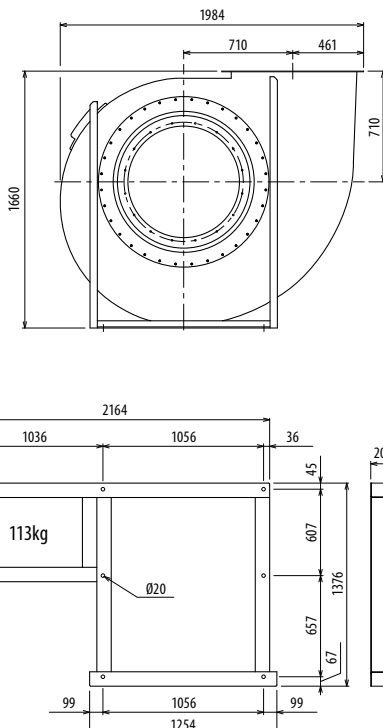
■ DIMENSIONS D'ENCOMBREMENT ET POIDS/COURBES DE FONCTIONNEMENT ■ OVERALL DIMENSIONS AND WEIGHT/WORKING CURVES
 ■ AUSMAß UND GEWICHTE/FUNKTIONSKURVEN ■ DIMENSIONES QUE OCUPA Y PESOS/CURVAS DE FUNCIONAMIENTO



Es. 4



Es. 1

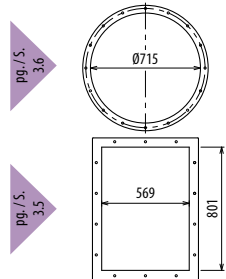


Il ventilatore non è orientabile • Peso in tabella comprensivo di motore

- Le ventilateur n'est pas orientable
- The fan is not revolvable
- Der Ventilator ist nicht drehbar
- El ventilador no es orientable
- Further information and sizes: ■ Weitere Infos und Größen: ■ Más informaciones y medidas:

Ulteriori informazioni e quote:
 ■ Ulérieures informations et cotes:
 ■ Further information and sizes:
 ■ Weitere Infos und Größen:
 ■ Más informaciones y medidas:

TIPO - Type		PESO Weight	PD ²									
VENTILATORE Fan	MOTORE Motor	Kg	Kgf x m ²	B	I	H	H1	H2	R	S	M	U
RM1000/4R	225 M4	963	48	1378	440	950	710	1180	45	657	540	1209
RM1000/4	250 M4	1081	53	1486	500	950	710	1180	45	657	600	1269
RM1000/6R	180 L6	743	47	1279	360	950	710	1180	45	657	460	1129
RM1000/6	200 L6	850	52	1336	400	950	710	1180	45	657	500	1169
RM1000/T		746	53			950	710	1180				



RD0 LG0

RD45 LG45

RD90 LG90

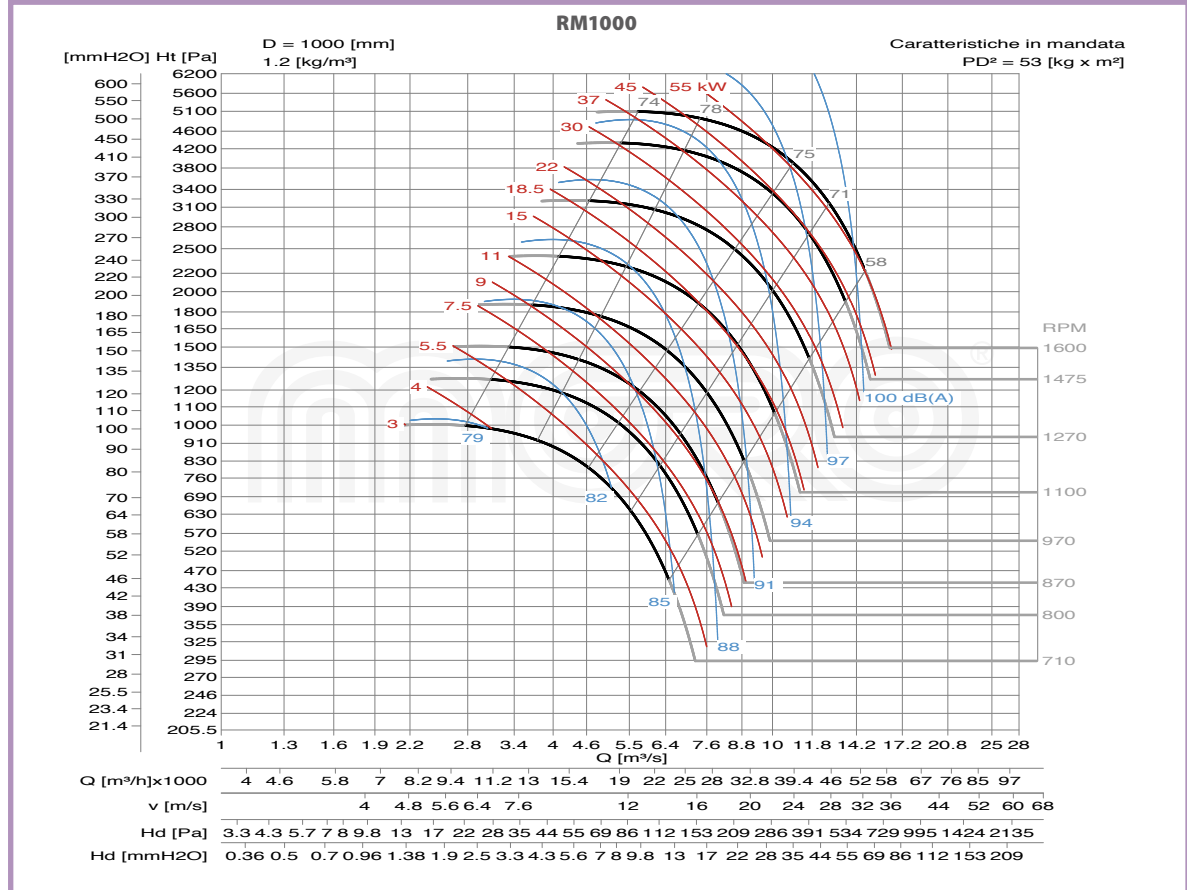
RD135 LG135

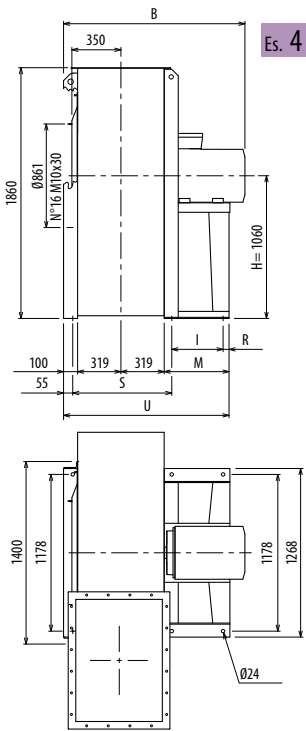
RD180 LG180

RD225 LG225

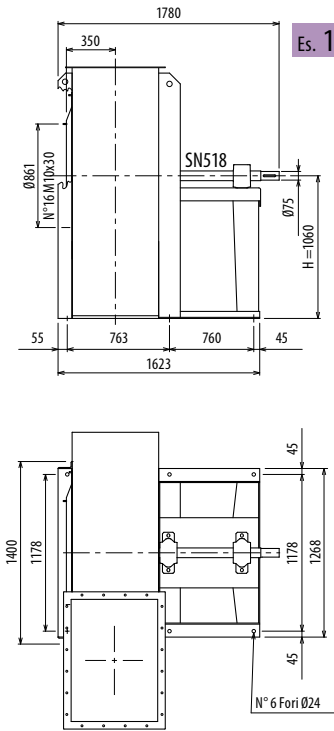
RD270 LG270

RD315 LG315

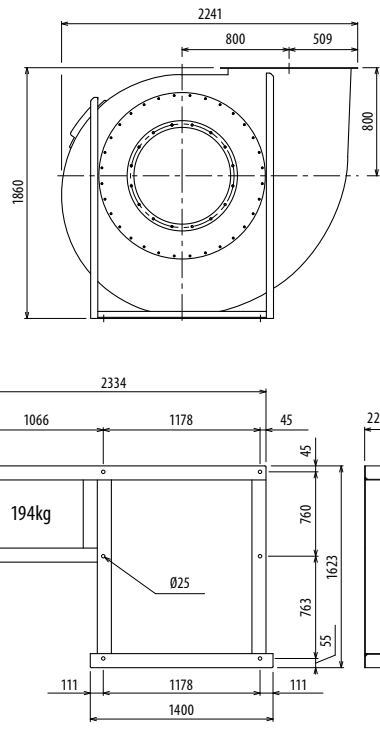




Es. 4



Es. 1



Il ventilatore non è orientabile • Peso in tabella comprensivo di motore

■ Le ventilateur n'est pas orientable
 Le poids dans le tableau inclut le moteur

■ The fan is not revolvable
 The weight indicated in the table includes motor

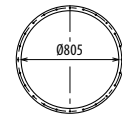
■ Der Ventilator ist nicht drehbar
 Gewichtsangabe in Tabelle inkl. Motor

■ El ventilador no es orientable
 El peso en la tabla incluye el motor

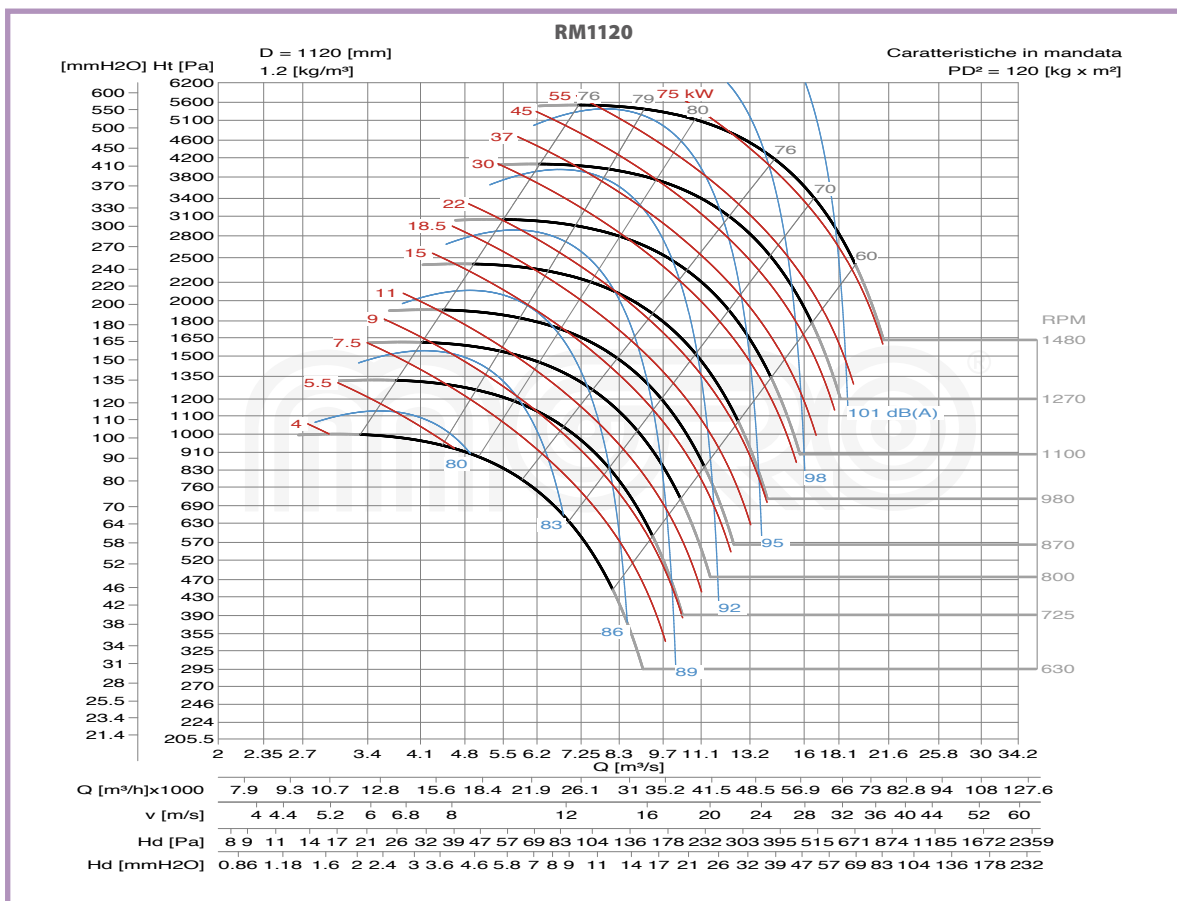
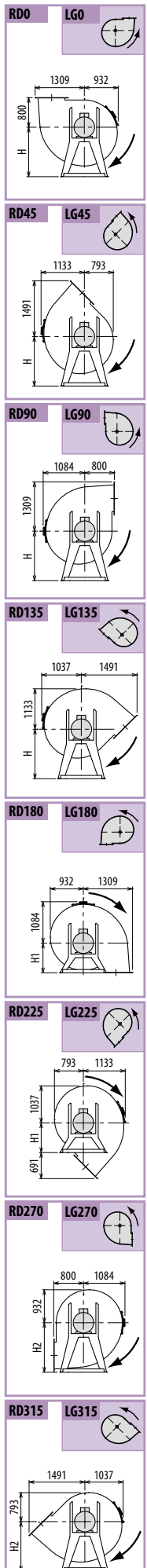
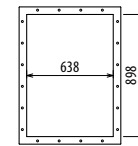
Ulteriori informazioni e quote:
 ■ Ulérieures informations et cotes:
 ■ Further information and sizes:
 ■ Weitere Infos und Größen:
 ■ Más informaciones y medidas:

TIPO - Type		PESO Weight	PD ²											
VENTILATORE Fan	MOTORE Motor	Kg	Kgf x m ²	B	I	H	H1	H2	R	S	M	U		
RM1120/4R	280 S4	1445	110	1558	565	1060	800	1320	45	763	690	1428		
RM1120/4	280 M4	1486	120	1558	565	1060	800	1320	45	763	690	1428		
RM1120/6R	200 L6	955	105	1405	375	1060	800	1320	45	763	500	1238		
RM1120/6	225 M6	1156	115	1447	415	1060	800	1320	45	763	540	1278		
RM1120/T		1040	120			1060	800	1320						

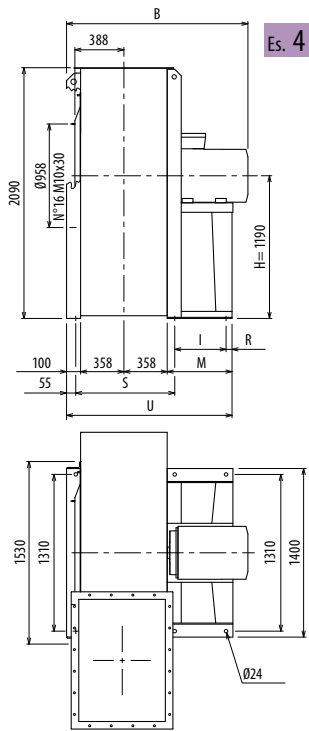
pg./s. 3.6



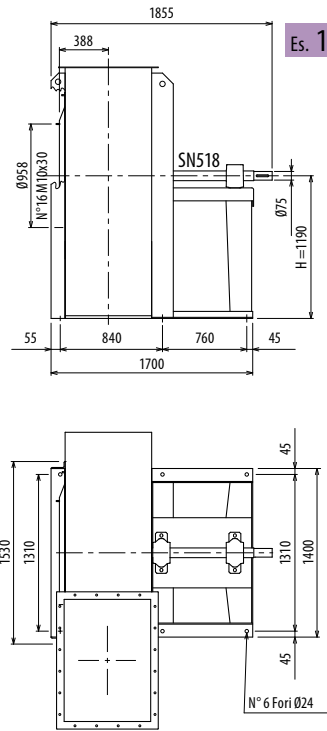
pg./s. 3.5



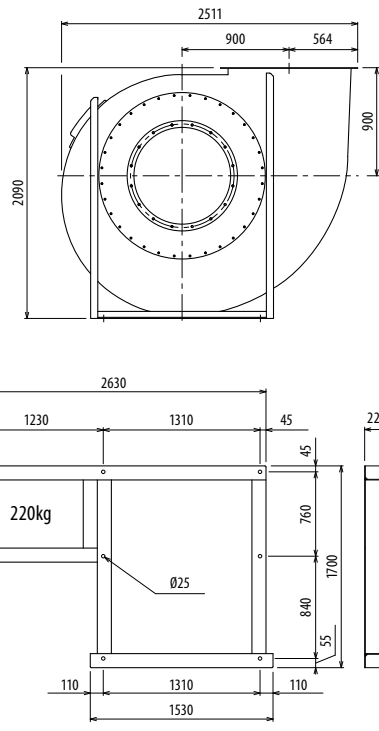
■ DIMENSIONS D'ENCOMBRE ET POIDS/COURBES DE FONCTIONNEMENT ■ OVERALL DIMENSIONS AND WEIGHT/WORKING CURVES
 ■ AUSMAß UND GEWICHTE/FUNKTIONSKURVEN ■ DIMENSIONES QUE OCUPA Y PESOS/CURVAS DE FUNCIONAMIENTO



Es. 4



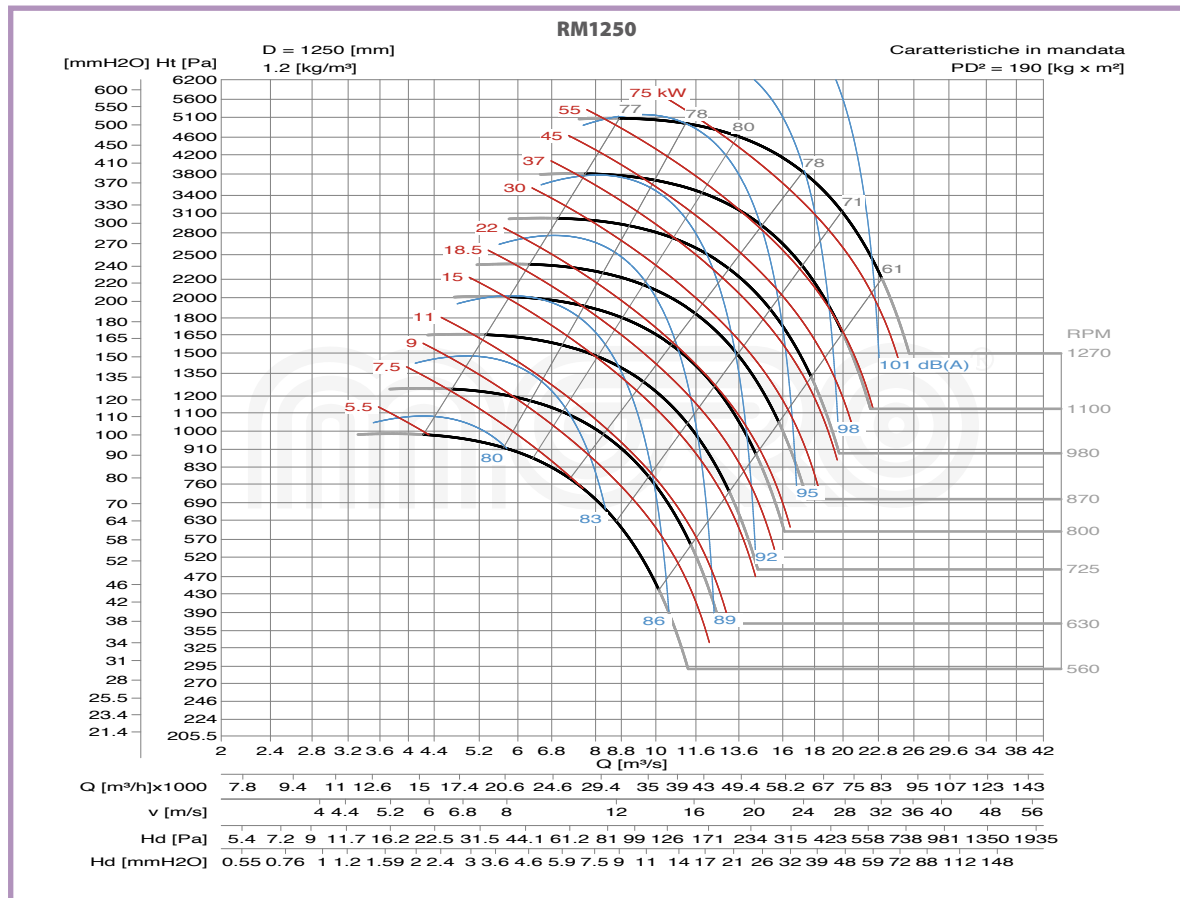
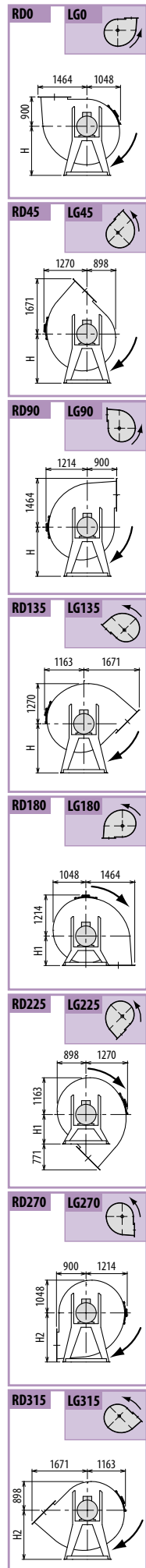
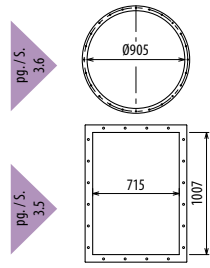
Es. 1

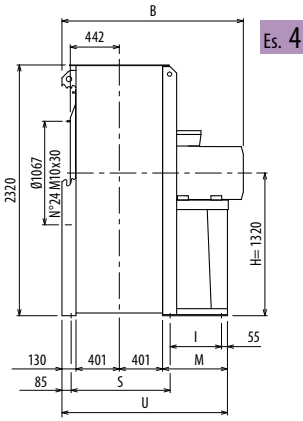


Il ventilatore non è orientabile • Peso in tabella comprensivo di motore

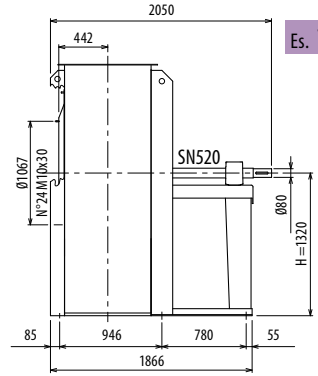
- Le ventilateur n'est pas orientable
- The fan is not revolvable
- Der Ventilator ist nicht drehbar
- El ventilador no es orientable
- Further information and quotes: Ulérieures informations et cotes: Further information and sizes: Weitere Infos und Größen: Más informaciones y medidas:

TIPO - Type		PESO Weight	PD ²											
VENTILATORE Fan	MOTORE Motor	Kg	Kgf x m ²	B	I	H	H1	H2	R	S	M	U		
RM1250/6R	250 M6	1430	180	1632	475	1190	900	1500	45	840	600	1415		
RM1250/6	280 S6	1915	190	1635	565	1190	900	1500	45	840	690	1505		
RM1250/T		1195	190			1190	900	1500						

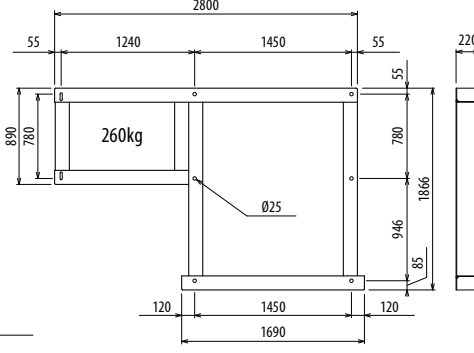
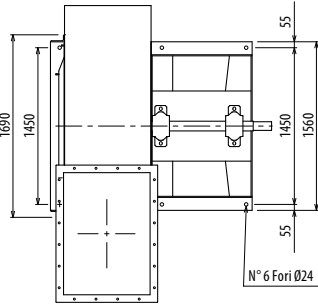
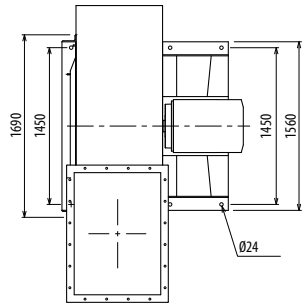
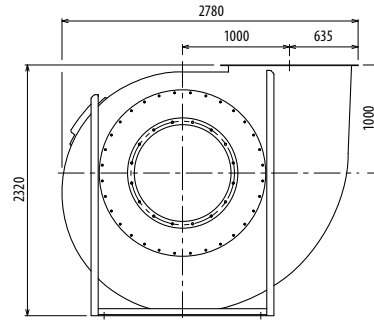




Es. 4



Es. 1

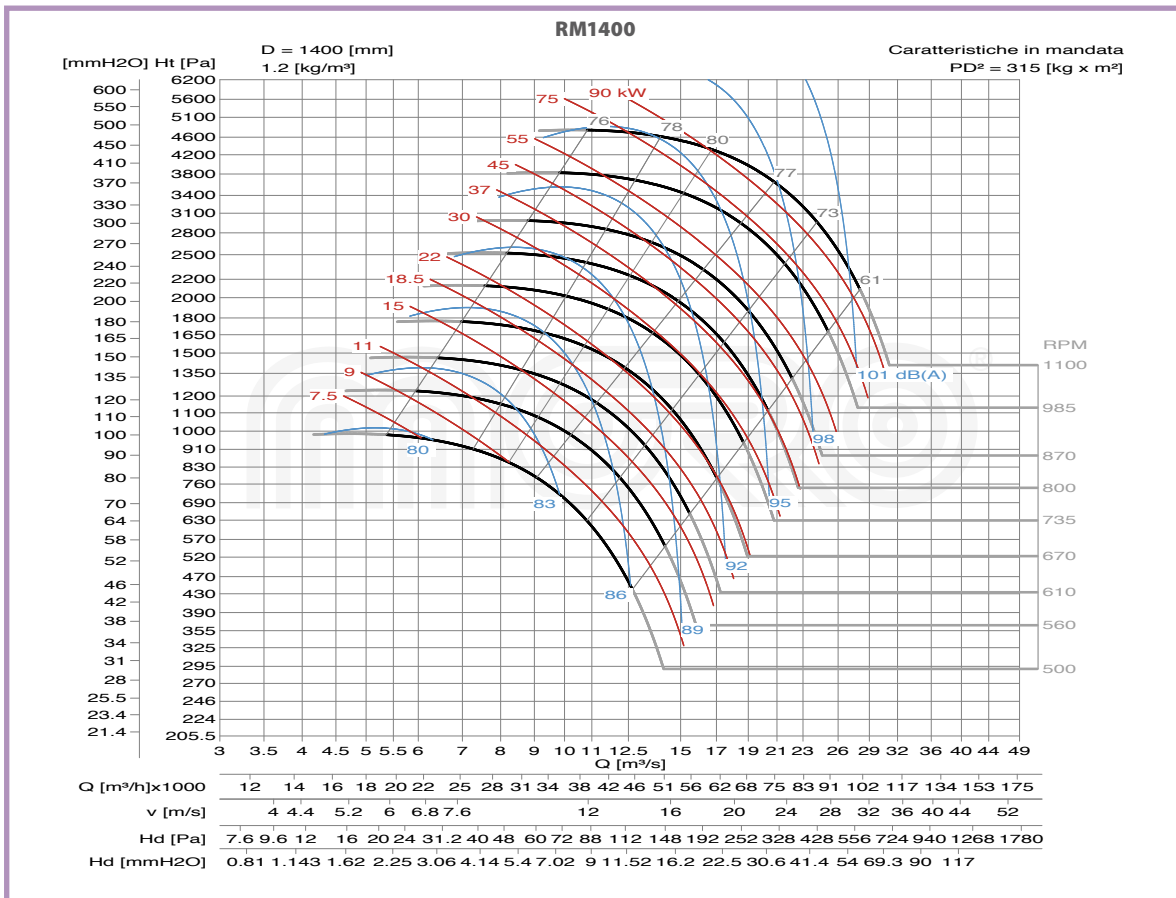
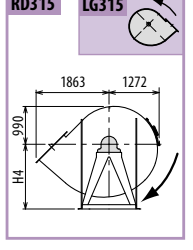
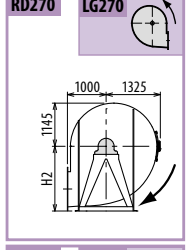
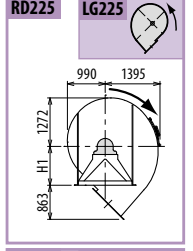
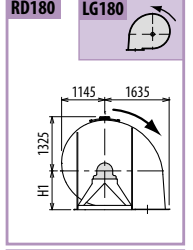
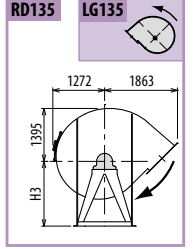
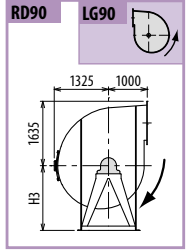
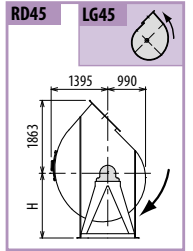
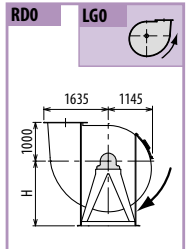
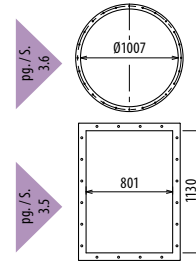


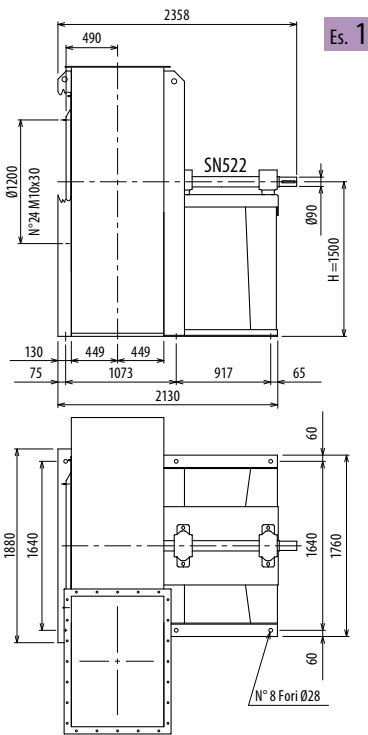
Il ventilatore non è orientabile • Peso in tabella comprensivo di motore

- Le ventilateur n'est pas orientable
- The fan is not revolvable
- Der Ventilator ist nicht drehbar
- El ventilador no es orientable
- Le poids dans le tableau inclut le moteur
- The weight indicated in the table includes motor
- Das Gewicht im Tafel schließt den Motor ein
- El peso en la tabla incluye el motor

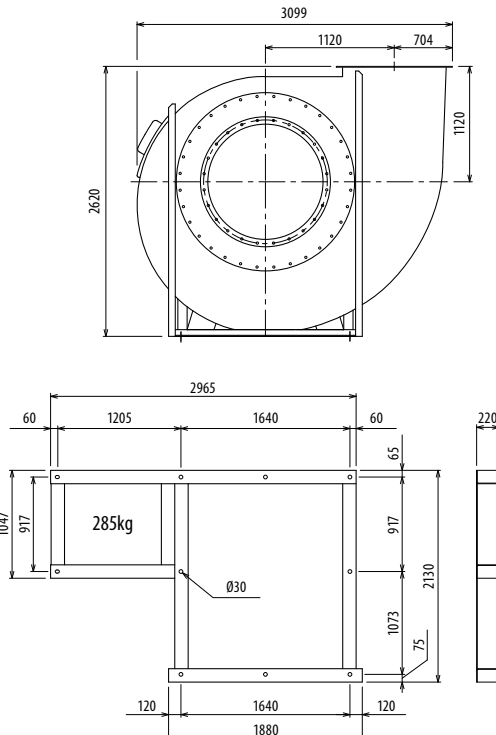
Ulteriori informazioni e quote:
 ■ Ulérieures informations et cotes:
 ■ Further information and sizes:
 ■ Weitere Infos und Größen:
 ■ Más informaciones y medidas:

TIPO - Type		PESO Weight	PD ²										
VENTILATORE Fan	MOTORE Motor	Kg	Kgf x m ²	B	I	H	H1	H2	H3	H4	M	S	U
RM1400/6R	280 M6	1850	300	1751	535	1320	1000	1700	1320	1700	690	946	1621
RM1400/6	315 S6	2366	315	1963	645	1320	1000	1700	1320	1700	800	946	1731
RM1400/T		1696	315			1320	1000	1700	1120	1500			





Es. 1



Il ventilatore non è orientabile

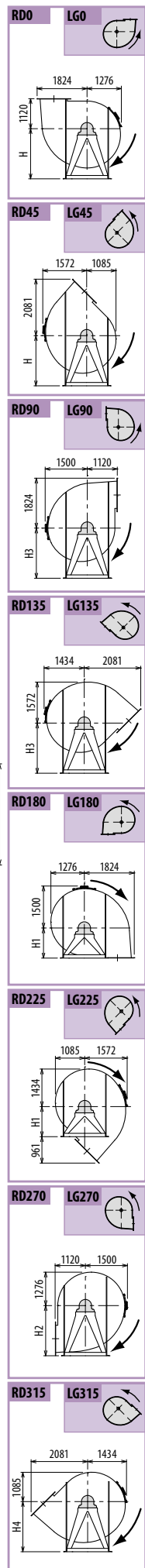
■ Le ventilateur n'est pas orientable

■ The fan is not revolvable

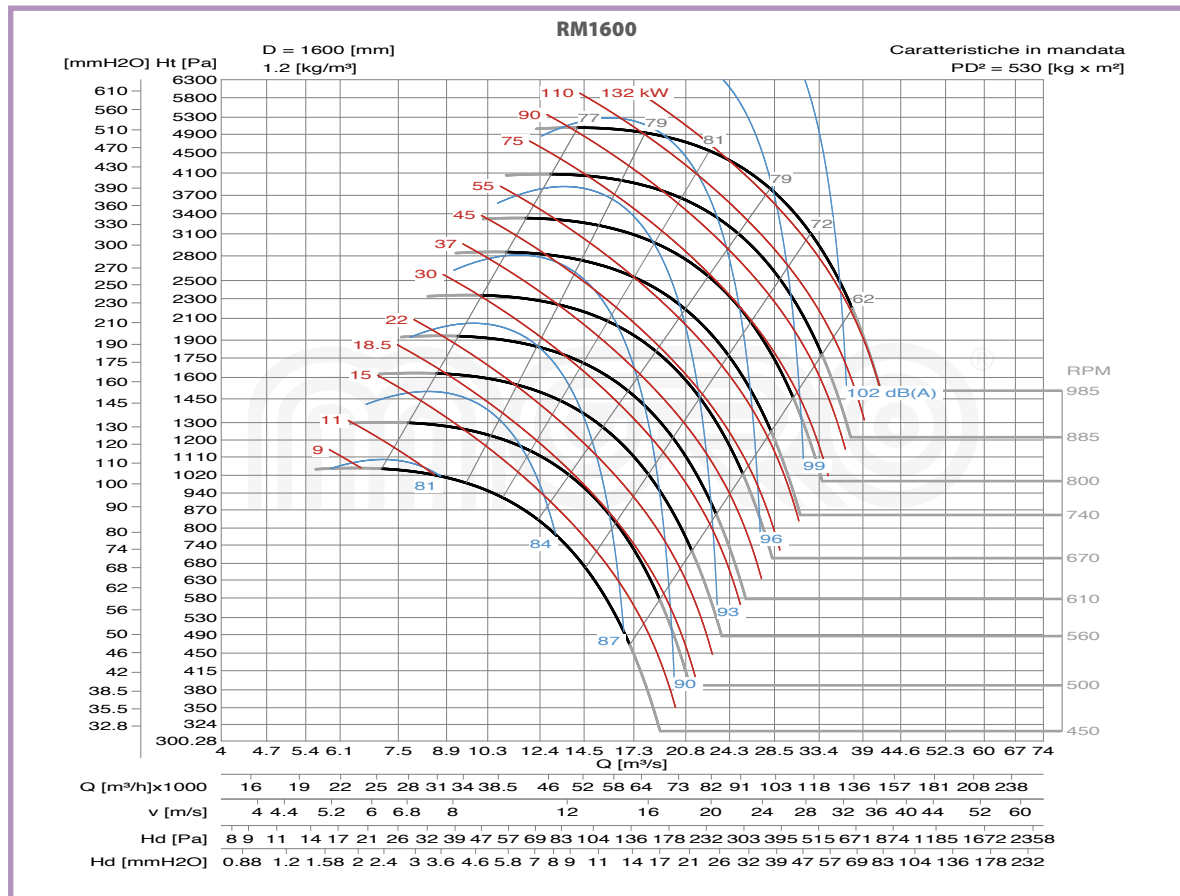
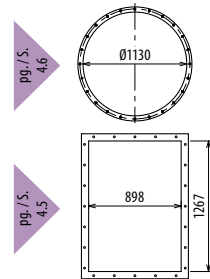
■ Der Ventilator ist nicht drehbar

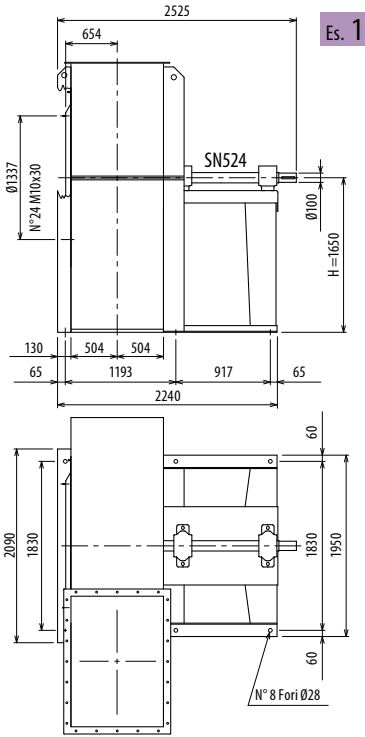
■ El ventilador no es orientable

Ulteriori informazioni e quote:
 ■ Ulérieures informations et cotes:
 ■ Further information and sizes:
 ■ Weitere Infos und Größen:
 ■ Más informaciones y medidas:

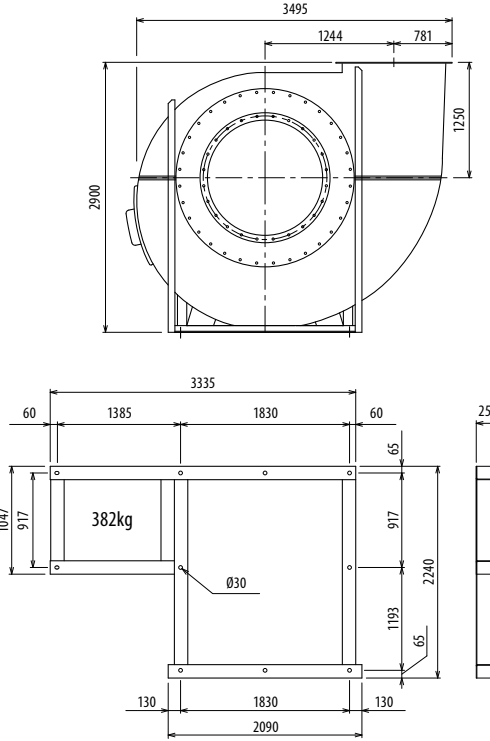


TIPO - Type		PESO Weight	PD ²												
VENTILATORE Fan	MOTORE Motor	Kg	Kgf x m ²	B	I	H	H1	H2	H3	H4	M				
RM1600/T		2100	530			1500	1120	1900	1250	1600					





Es. 1



Il ventilatore non è orientabile

■ Le ventilateur n'est pas orientable

■ The fan is not revolvable

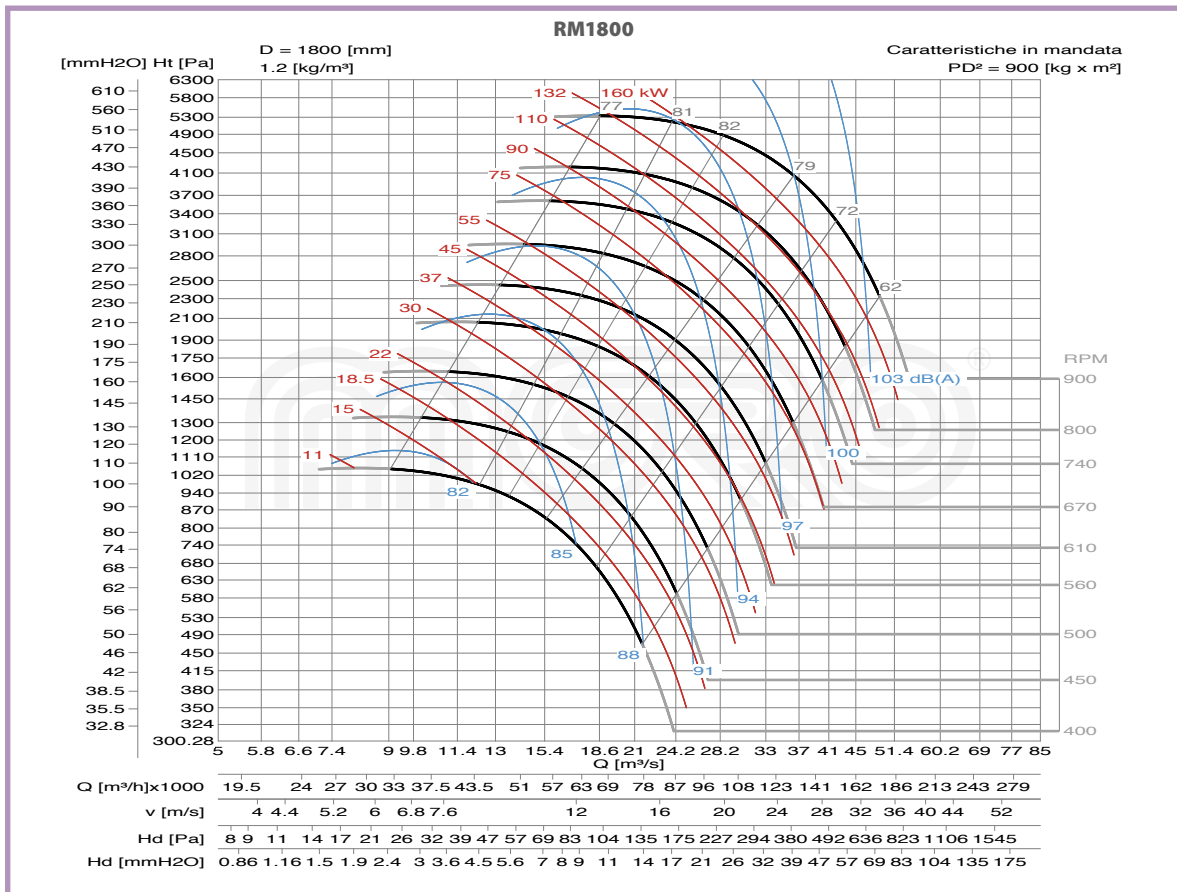
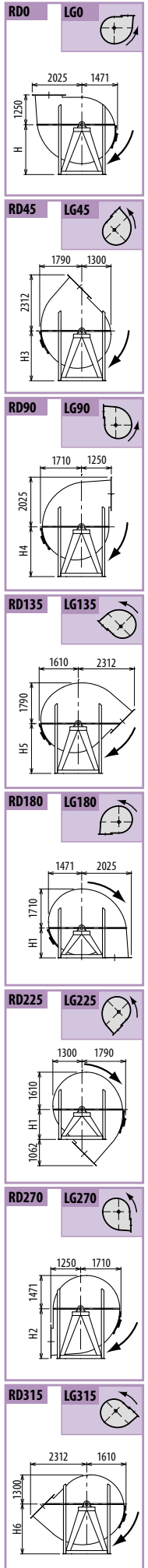
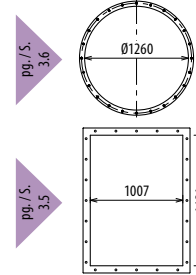
■ Der Ventilator ist nicht drehbar

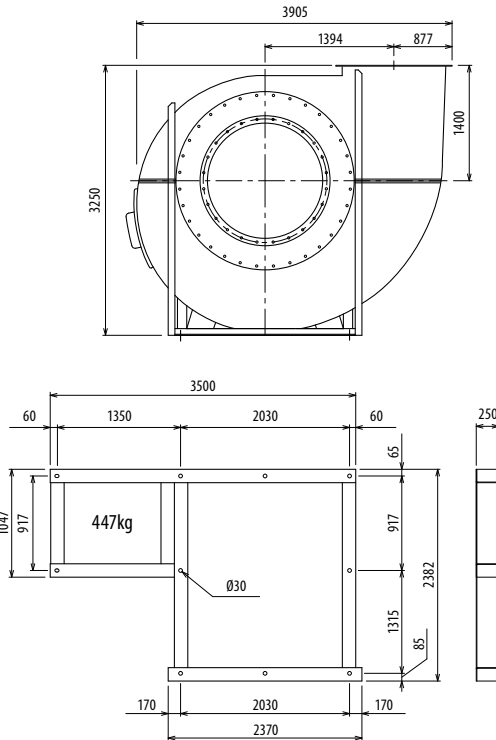
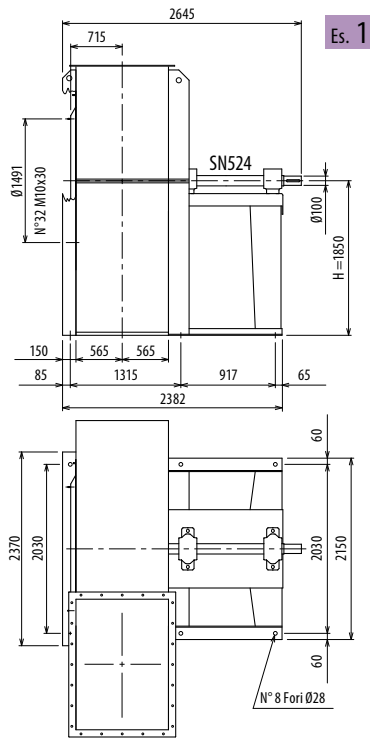
■ El ventilador no es orientable

Ulteriori informazioni e quote:

- Ulérieures informations et cotes:
- Further information and sizes:
- Weitere Infos und Größen:
- Más informaciones y medidas:

TIPO - Type		PESO Weight	PD ²									
VENTILATORE Fan	MOTORE Motor	Kg	Kgf x m ²	B	I	H	H1	H2	H3	H4	H5	H6
RM1800/T		2740	900			1650	1250	2120	1570	1400	1320	1800





Il ventilatore non è orientabile

- Le ventilateur n'est pas orientable
- The fan is not revolvable
- Der Ventilator ist nicht drehbar
- El ventilador no es orientable

Ulteriori informazioni e quote:
 ■ Ulérieures informations et cotes:
 ■ Further information and sizes:
 ■ Weitere Infos und Größen:
 ■ Más informaciones y medidas:

TIPO - Type		PESO Weight	PD ²												
VENTILATORE Fan	MOTORE Motor	Kg	Kgf x m ²	B	I	H	H1	H2	H3	H4	H5	H6			
RM2000/T		3630	1400			1850	1400	2360	1750	1600	1450	2000			

