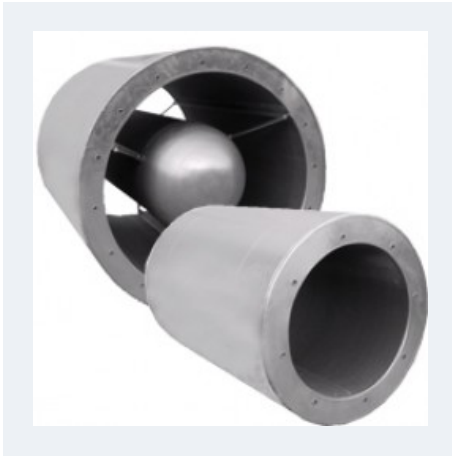


SIL-C / SIL-CN



INLET-OUTLET CIRCULAR SILENCER

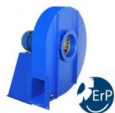
Designed to reduce fan noise and be assembled to circular fans and ducts. Optional connection flanges might be needed to connect directly to fans.

- Casing in galvanised steel, thickness 0,8mm up to Ø1250mm and 1,0mm over.
- Mounting flange with threaded insert.
- Acoustic material in mineral wool 70Kg/m3 with protection against erosion by glass fibre fire resistance M0 and extended metal sheet.
- Acoustic data tested in accordance to ISO 7235.
- Holes according to the Eurovent Standard.
- The SIL-CN are provided with an inner core that increases the attenuation of the silencer.
- Can support pressures up to 1000Pa

Fans



AA P/R



AA45/5-60/
7



BCI



BOX RL



BOX RLF
F400



HC



HCA



HCF F300



HCF F400



HCFX
(F400+ATE
X)



HCX
(ATEX)



HH



HM



HMF F300



HMF F400
2P



HMF F400
DUAL



HMF X
(F400+ATE
X)



HMX
(ATEX)

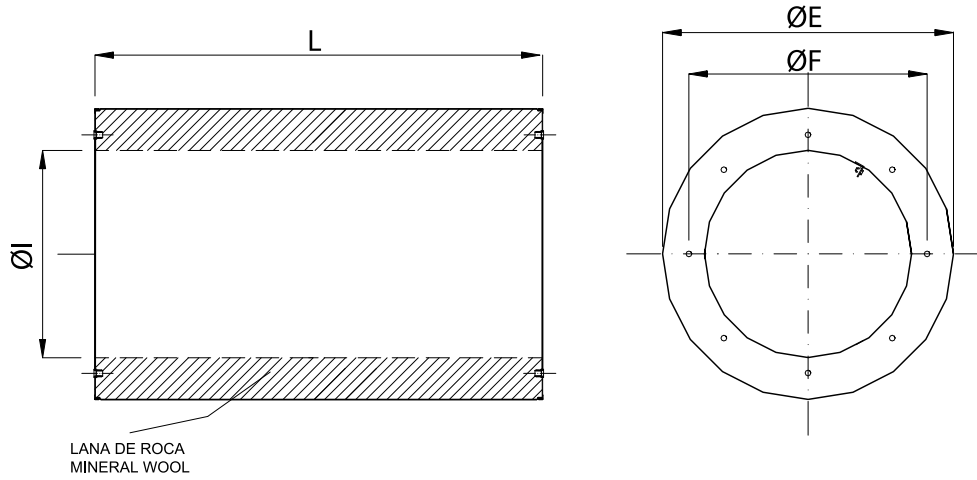
Technical data

Code	Model	Weight
960025025	SIL-C 250/250	7
960025375	SIL-C 250/375	10
960025050	SIL-C 250/500	13
960315315	SIL-C 315/315	12
960315472	SIL-C 315/472	17
960355355	SIL-C 355/355	15
960355532	SIL-C 355/532	17
960355071	SIL-C 355/710	24
960040040	SIL-C 400/400	16
960040060	SIL-C 400/600	23
960040080	SIL-C 400/800	29
960045045	SIL-C 450/450	20
960045090	SIL-C 450/900	34
960050050	SIL-C 500/500	23
960050075	SIL-C 500/750	31
960056056	SIL-C 560/560	26
960056084	SIL-C 560/840	36
960063063	SIL-C 630/630	32
960063945	SIL-C 630/945	46
960071071	SIL-C 710/710	42
960080080	SIL-C 800/800	50
960090090	SIL-C 900/900	80
960315063	SIL-C 315/ 630	22
960045675	SIL-C 450/ 675	26
960050100	SIL-C 500/1000	40
960056112	SIL-C 560/1120	47
960063126	SIL-C 630/1260	60
960071065	SIL-C 710/1065	58
960071142	SIL-C 710/1420	75
960080120	SIL-C 800/1200	70
960080160	SIL-C 800/1600	90
960090135	SIL-C 900/1350	101
960090180	SIL-C 900/1800	122
961025025	SIL-CN 250/250	10
961025375	SIL-CN 250/375	13
961025050	SIL-CN 250/500	17
961315315	SIL-CN 315/315	15
961315472	SIL-CN 315/472	21

Code	Model	Weight
961355355	SIL-CN 355/355	17
961355532	SIL-CN 355/532	23
961355071	SIL-CN 355/710	29
961040040	SIL-CN 400/400	20
961040060	SIL-CN 400/600	27
961040080	SIL-CN 400/800	35
961045045	SIL-CN 450/450	24
961045090	SIL-CN 450/900	41
961050050	SIL-CN 500/500	29
961050075	SIL-CN 500/750	39
961056056	SIL-CN 560/560	33
961056084	SIL-CN 560/840	46
961063063	SIL-CN 630/630	44
961063945	SIL-CN 630/945	64
961071071	SIL-CN 710/710	57
961080080	SIL-CN 800/800	66
961090090	SIL-CN 900/900	107
960100100	SIL-C 1000/1000	115
960100150	SIL-C 1000/1500	137
960100200	SIL-C 1000/2000	160
960112112	SIL-C 1120/1120	134
960112168	SIL-C 1120/1680	160
960112224	SIL-C 1120/2240	186
960125125	SIL-C 1250/1250	159
960125187	SIL-C 1250/1875	191
960125250	SIL-C 1250/2500	223
960140140	SIL-C 1400/1400	218
960140210	SIL-C 1400/2100	270
960140280	SIL-C 1400/2800	322
961315063	SIL-CN 315/ 630	27
961045675	SIL-CN 450/ 675	31
961050100	SIL-CN 500/1000	50
961056112	SIL-CN 560/1120	60
961063126	SIL-CN 630/1260	84
961071065	SIL-CN 710/1065	78
961071142	SIL-CN 710/1420	101
961080120	SIL-CN 800/1200	93
961080160	SIL-CN 800/1600	120
961090135	SIL-CN 900/1350	135
961090180	SIL-CN 900/1800	163

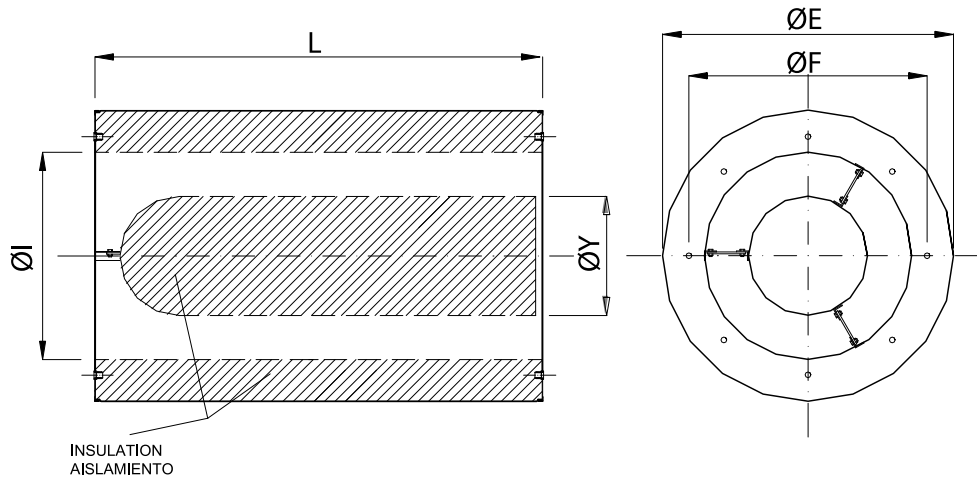
Code	Model	Weight
961100100	SIL-CN 1000/1000	149
961100150	SIL-CN 1000/1500	178
961100200	SIL-CN 1000/2000	208
961112112	SIL-CN 1120/1120	174
961112168	SIL-CN 1120/1680	208
961112224	SIL-CN 1120/2240	226
961125125	SIL-CN 1250/1250	206
961125187	SIL-CN 1250/1875	248
961125250	SIL-CN 1250/2500	289
961140140	SIL-CN 1400/1400	283
961140210	SIL-CN 1400/2100	351
961140280	SIL-CN 1400/2800	418

Dimensions



Model	E	F	I	L	nutser
SIL-C 250/250	390	280	250	250	M8
SIL-C 250/375	390	280	250	375	M8
SIL-C 250/500	390	280	250	500	M8
SIL-C 315/315	455	355	315	315	M8
SIL-C 315/472	455	355	315	472	M8
SIL-C 355/355	495	395	355	355	M8
SIL-C 355/532	495	395	355	532	M8
SIL-C 355/710	495	395	355	710	M8
SIL-C 400/400	540	450	400	400	M10
SIL-C 400/600	540	450	400	600	M10
SIL-C 400/800	540	450	400	800	M10
SIL-C 450/450	610	500	450	450	M10
SIL-C 450/900	610	500	450	900	M10
SIL-C 500/500	660	560	500	500	M10
SIL-C 500/750	660	560	500	750	M10
SIL-C 560/560	720	620	560	560	M10
SIL-C 560/840	720	620	560	840	M10
SIL-C 630/630	790	690	630	630	M10
SIL-C 630/945	790	690	630	945	M10
SIL-C 710/710	870	770	710	710	M10
SIL-C 800/800	1000	860	800	800	M10
SIL-C 900/900	1100	970	900	900	M12
SIL-C 315/ 630	455	355	315	630	M8
SIL-C 450/ 675	610	500	450	675	M10
SIL-C 500/1000	660	560	500	1000	M10

Model	E	F	I	L	nutser
SIL-C 560/1120	720	620	560	1120	M10
SIL-C 630/1260	790	690	630	1260	M10
SIL-C 710/1065	870	770	710	1065	M10
SIL-C 710/1420	870	770	710	1420	M10
SIL-C 800/1200	1000	860	800	1200	M10
SIL-C 800/1600	1000	860	800	1600	M10
SIL-C 900/1350	1100	970	900	1350	M12
SIL-C 900/1800	1100	970	900	1800	M12
SIL-C 1000/1000	1200	1070	1000	1000	M12
SIL-C 1000/1500	1200	1070	1000	1500	M12
SIL-C 1000/2000	1200	1070	1000	2000	M12
SIL-C 1120/1120	1320	1190	1120	1120	M12
SIL-C 1120/1680	1320	1190	1120	1680	M12
SIL-C 1120/2240	1320	1190	1120	2240	M12
SIL-C 1250/1250	1450	1320	1250	1250	M12
SIL-C 1250/1875	1450	1320	1250	1875	M12
SIL-C 1250/2500	1450	1320	1250	2500	M12
SIL-C 1400/1400	1600	1470	1400	1400	M12
SIL-C 1400/2100	1600	1470	1400	2100	M12
SIL-C 1400/2800	1600	1470	1400	2800	M12



Model	E	F	I	L	Y	nutser
SIL-CN 250/250	390	280	250	250	120	M8
SIL-CN 250/375	390	280	250	375	120	M8
SIL-CN 250/500	390	280	250	500	120	M8
SIL-CN 315/315	455	355	315	315	140	M8

Model	E	F	I	L	Y	nutser
SIL-CN 315/472	455	355	315	472	140	M8
SIL-CN 355/355	495	395	355	355	200	M8
SIL-CN 355/532	495	395	355	532	200	M8
SIL-CN 355/710	495	395	355	710	200	M8
SIL-CN 400/400	540	450	400	400	200	M10
SIL-CN 400/600	540	450	400	600	200	M10
SIL-CN 400/800	540	450	400	800	200	M10
SIL-CN 450/450	610	500	450	450	245	M10
SIL-CN 450/900	610	500	450	900	245	M10
SIL-CN 500/500	660	560	500	500	245	M10
SIL-CN 500/750	660	560	500	750	245	M10
SIL-CN 560/560	720	620	560	560	295	M10
SIL-CN 560/840	720	620	560	840	295	M10
SIL-CN 630/630	790	690	630	630	295	M10
SIL-CN 630/945	790	690	630	945	295	M10
SIL-CN 710/710	870	770	710	710	380	M10
SIL-CN 800/800	1000	860	800	800	380	M10
SIL-CN 900/900	1100	970	900	900	380	M12
SIL-CN 315/ 630	455	355	315	630	140	M8
SIL-CN 450/ 675	610	500	450	675	245	M10
SIL-CN 500/1000	660	560	500	1000	245	M10
SIL-CN 560/1120	720	620	560	1120	295	M10
SIL-CN 630/1260	790	690	630	1260	295	M10
SIL-CN 710/1065	870	770	710	1065	380	M10
SIL-CN 710/1420	870	770	710	1420	380	M10
SIL-CN 800/1200	1000	860	800	1200	380	M10
SIL-CN 800/1600	1000	860	800	1600	380	M10
SIL-CN 900/1350	1100	970	900	1350	380	M12
SIL-CN 900/1800	1100	970	900	1800	380	M12
SIL-CN 1000/1000	1200	1070	1000	1000	650	M12
SIL-CN 1000/1500	1200	1070	1000	1500	650	M12
SIL-CN 1000/2000	1200	1070	1000	2000	650	M12
SIL-CN 1120/1120	1320	1190	1120	1120	650	M12
SIL-CN 1120/1680	1320	1190	1120	1680	650	M12
SIL-CN 1120/2240	1320	1190	1120	2240	650	M12
SIL-CN 1250/1250	1450	1320	1250	1250	650	M12
SIL-CN 1250/1875	1450	1320	1250	1875	650	M12
SIL-CN 1250/2500	1450	1320	1250	2500	650	M12
SIL-CN 1400/1400	1600	1470	1400	1400	650	M12
SIL-CN 1400/2100	1600	1470	1400	2100	650	M12

Model	E	F	I	L	Y	nutser
SIL-CN 1400/2800	1600	1470	1400	2800	650	M12